

610 E MOREHEAD STREET

610 EAST MOREHEAD STREET | EXECUTIVE SUITES | CHARLOTTE, NC 28202



AVAILABLE FOR LEASE OFFICE SPACE IN MIDTOWN 350 - 1,500 SF

- A two-story office building with signage opportunities
- Creative, open space with access to shared conference rooms
- Free surface parking
- East Morehead Street visibility; Signage opportunity
- Within walking distance to the light rail station
Numerous amenities located within immediate area, including restaurants, retail and the Dowd YMCA
- Located in the heart of Midtown Charlotte; Less than 5 minutes from I-77, I-277 and Uptown Charlotte
- Beacon Partners owns, leased and manages over 1 million in the Midtown and South End



FOR MORE INFORMATION, CONTACT:

ERIN SHAW
704.926.1414 (d) erin@beacondevelopment.com
500 East Morehead Street | Suite 200 | Charlotte, NC 28202
www.beacondevelopment.com

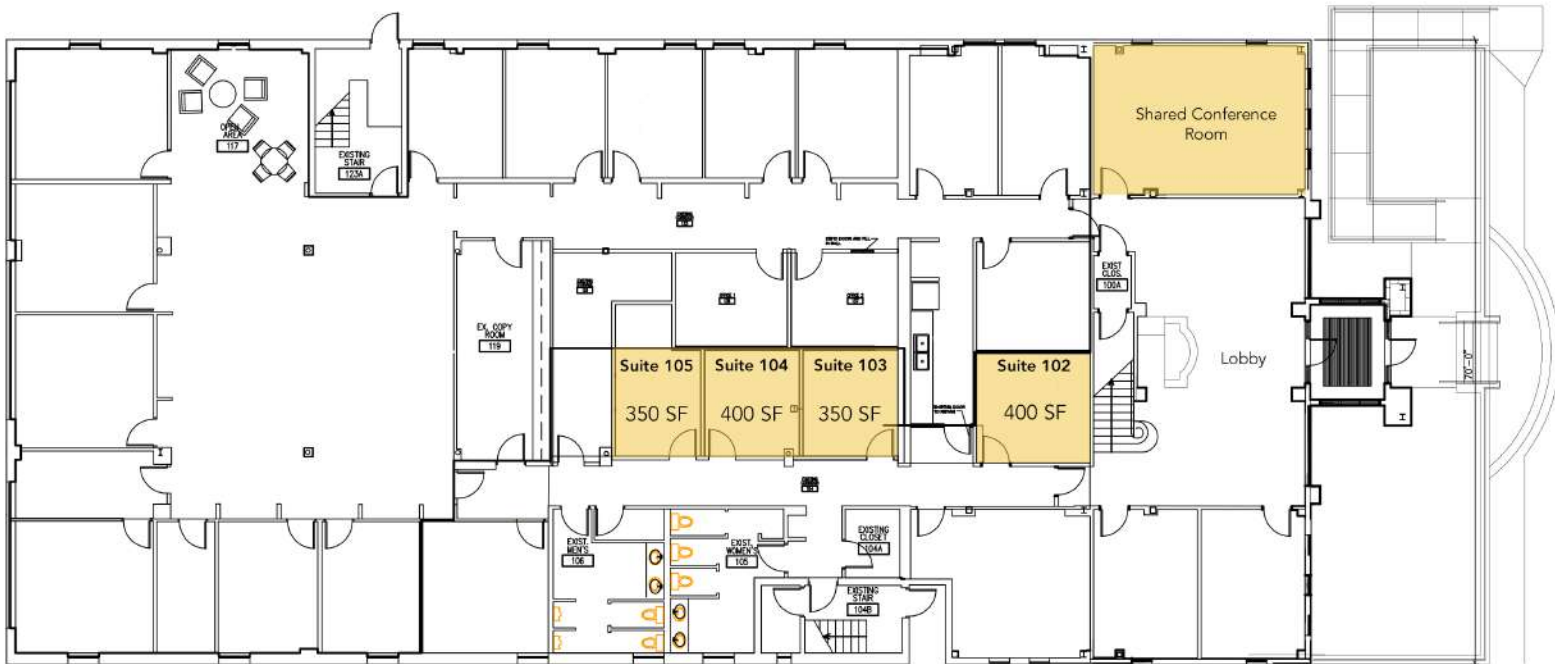
KRISTY VENNING
704.926.1409 (d) kristy@beacondevelopment.com
500 East Morehead Street | Suite 200 | Charlotte, NC 28202
www.beacondevelopment.com



610 E MOREHEAD STREET

610 EAST MOREHEAD STREET | EXECUTIVE SUITES | CHARLOTTE, NC 28202

EXECUTIVE SUITES: #102, 103, 104, 105



FOR MORE INFORMATION, CONTACT:

ERIN SHAW
704.926.1414 (d) erin@beacondevelopment.com
500 East Morehead Street | Suite 200 | Charlotte, NC 28202
www.beacondevelopment.com

FOR MORE INFORMATION, CONTACT:

KRISTY VENNING
704.926.1409 (d) kristy@beacondevelopment.com
500 East Morehead Street | Suite 200 | Charlotte, NC 28202
www.beacondevelopment.com

