

702 Oberlin



Raleigh, NC 27605

Be at the Center of Raleigh's Best

702 Oberlin is located adjacent to Village District with abundant restaurant, shopping, and fitness amenities. Major capital improvements are in process including lobby, restrooms and the exterior façade with a completion date of December 2022. Conveniently located minutes from Downtown Raleigh, I-440, and Wade Avenue.



+/- 58,000 SF Office Building



On-site surface parking ratio
3.5/1,000 SF



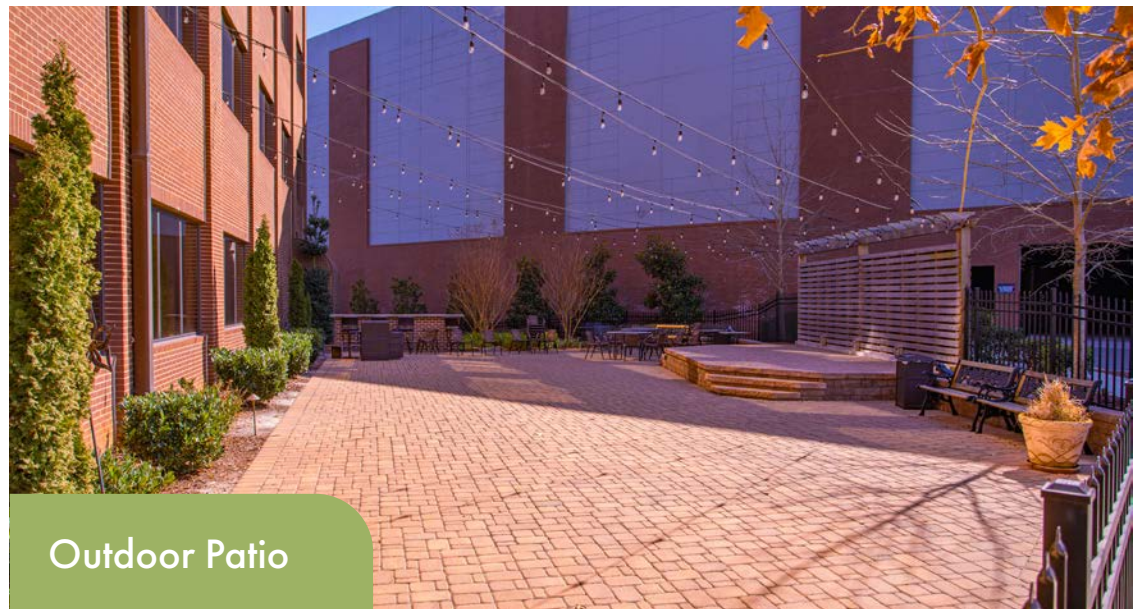
Outdoor patios and
workspaces



Highly visible
signage opportunities

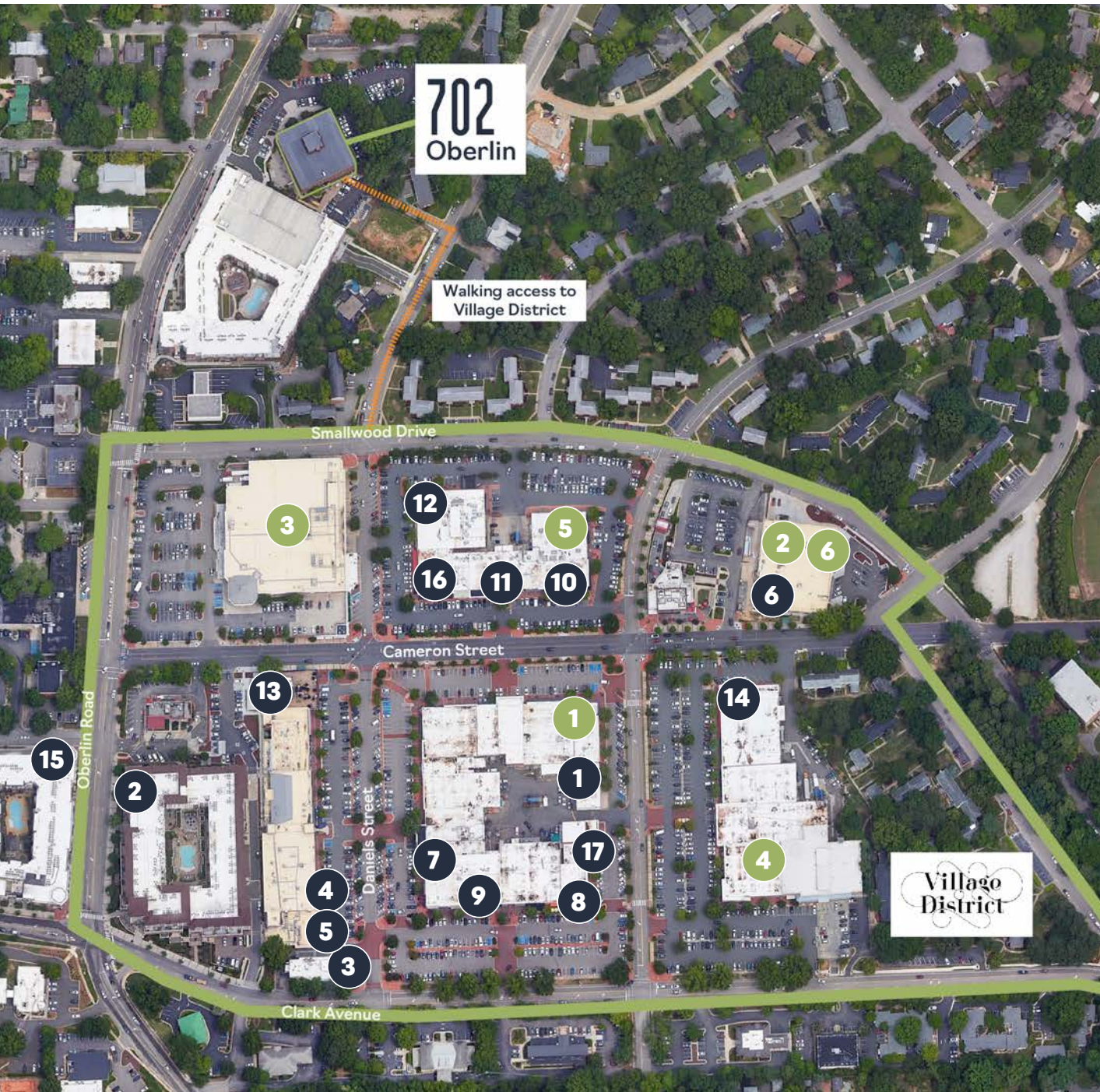


Steps from Village District



Outdoor Patio

Conveniently Located in the Heart of the Village District



Restaurants & Cafes

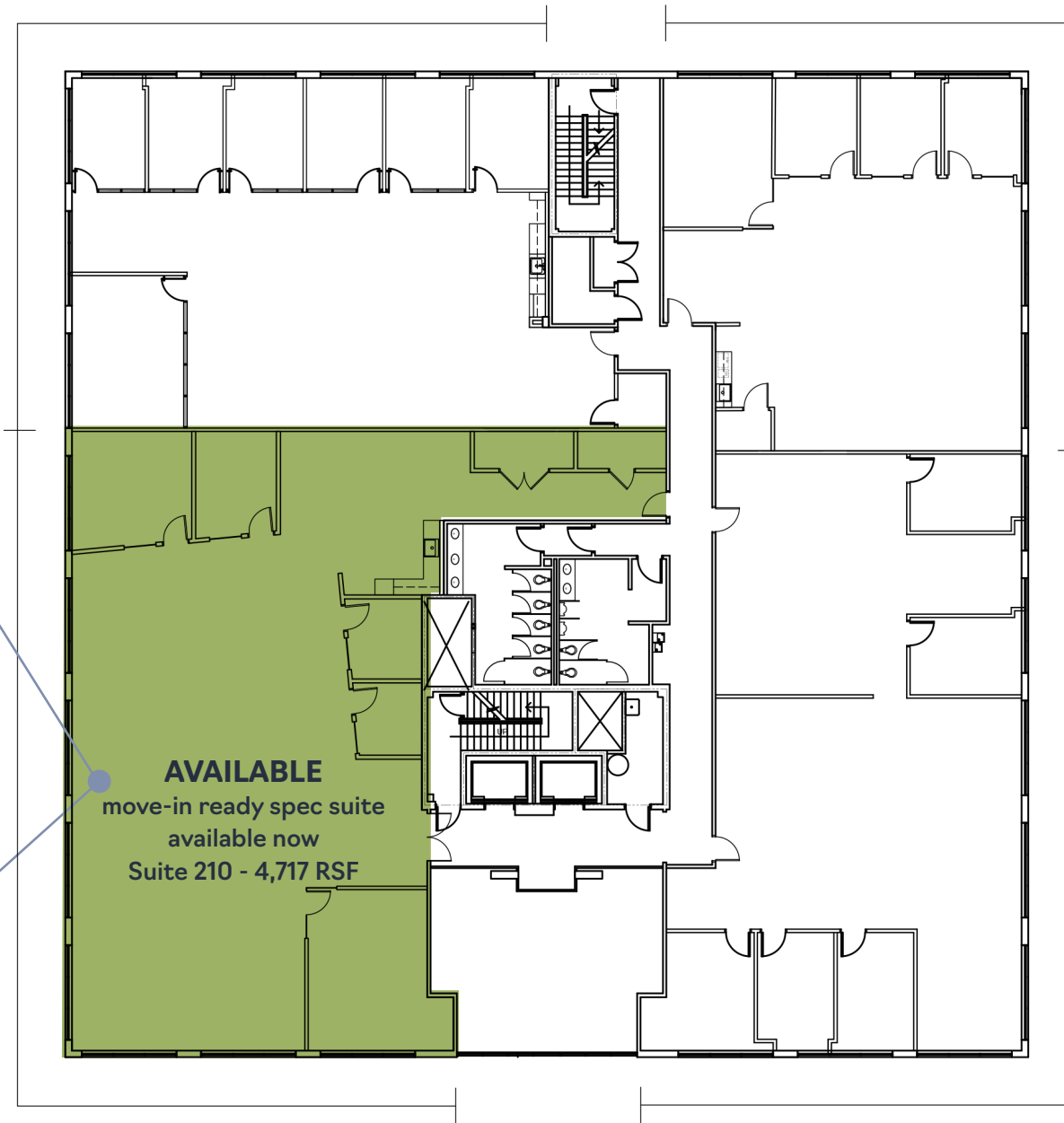
1. Ajisai
2. Benelux Cafe
3. Cafe Carolina and Bakery
4. Cantina 18
5. CAVA
6. Chick-fil-A
7. Chopt Creative Salad Co.
8. Flying Biscuit Café
9. Goodberry's Frozen Custard
10. Kale Me Crazy
11. Moe's Southwest Grill
12. Rise
13. Starbucks
14. Tazza Kitchen
15. Tupelo Honey Southern Kitchen & Bar
16. Village Deli and Grill
17. Which Wich

Conveniences

1. CorePower Yoga
2. Crunch Fitness
3. Harris Teeter
4. The Fresh Market
5. The UPS Store
6. Walgreens Pharmacy

Floorplans

Second Floor



AVAILABLE
move-in ready spec suite
available now
Suite 210 - 4,717 RSF

Floorplans

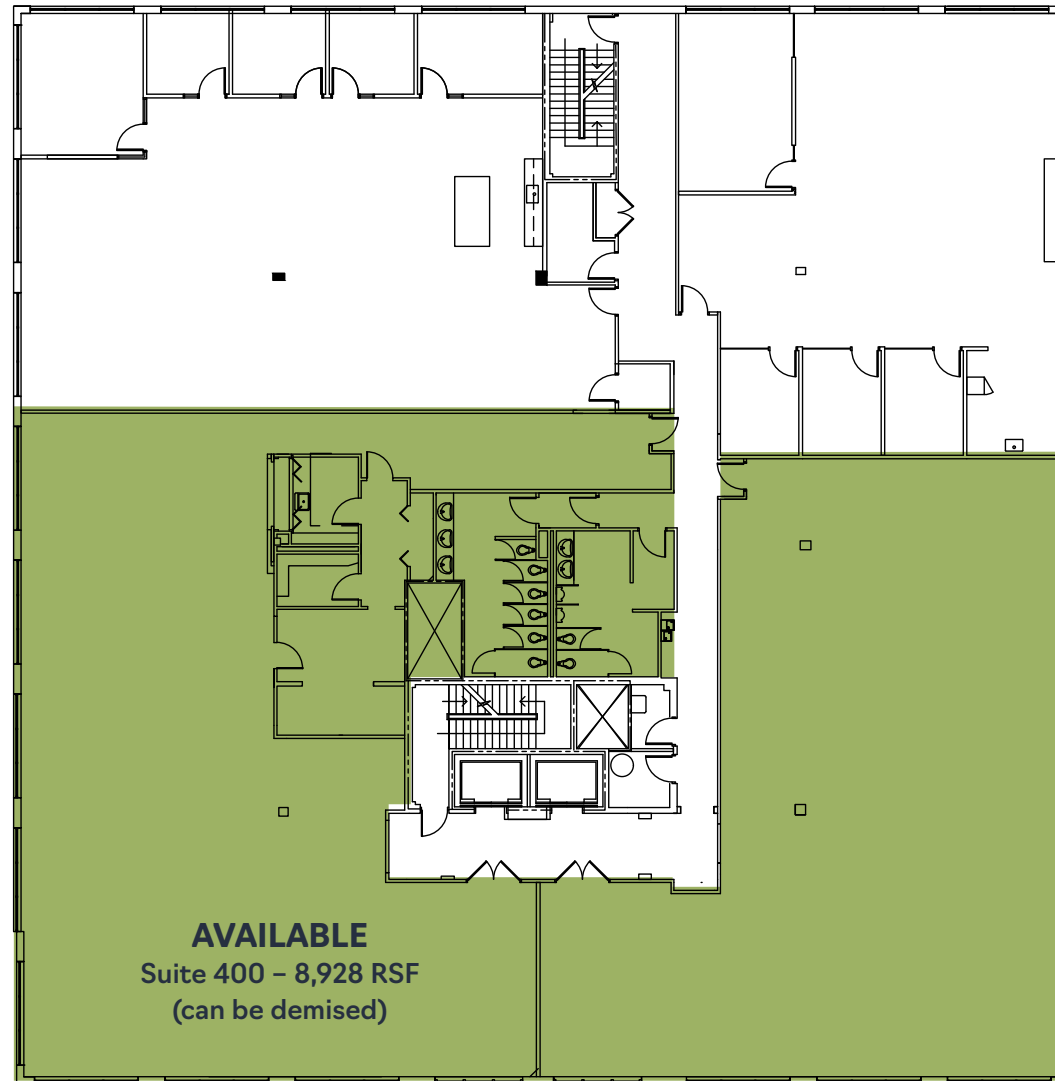
Third Floor



**Proposed design for spec suites*

Floorplans

Fourth Floor





Contact Us

Patti Autry
919.424.8156
patti.autry@jll.com

John MacDonell
919.424.8166
john.macdonell@jll.com



Although information has been obtained from sources deemed reliable, neither Owner nor JLL makes any guarantees, warranties or representations, express or implied, as to the completeness or accuracy as to the information contained herein. Any projections, opinions, assumptions or estimates used are for example only. There may be differences between projected and actual results, and those differences may be material. The Property may be withdrawn without notice. Neither Owner nor JLL accepts any liability for any loss or damage suffered by any party resulting from reliance on this information. If the recipient of this information has signed a confidentiality agreement regarding this matter, this information is subject to the terms of that agreement. ©2022. Jones Lang LaSalle IP, Inc. All rights reserved.