

801 E MOREHEAD STREET

801 EAST MOREHEAD STREET | EXECUTIVE SUITES | CHARLOTTE, NC 28202



OFFICE SPACE IN MIDTOWN AVAILABLE FOR LEASE

150 SF & UP SF

- Move-in ready, furnished suites available
- Access to signalized light on E. Morehead Street
- Excellent visibility
- Free & secured surface parking
- Numerous amenities located within immediate area, including restaurants, retail (Metropolitan) and the Dowd YMCA
- Minutes from I-77, I-277, and Uptown Charlotte
- Beacon Partners owns, leased and manages over 1 million in the Midtown and South End areas



FOR MORE INFORMATION, CONTACT:

KRISTY VENNING

704.926.1409 | kristy@beacondevelopment.com

500 East Morehead Street | Suite 200 | Charlotte, NC 28202

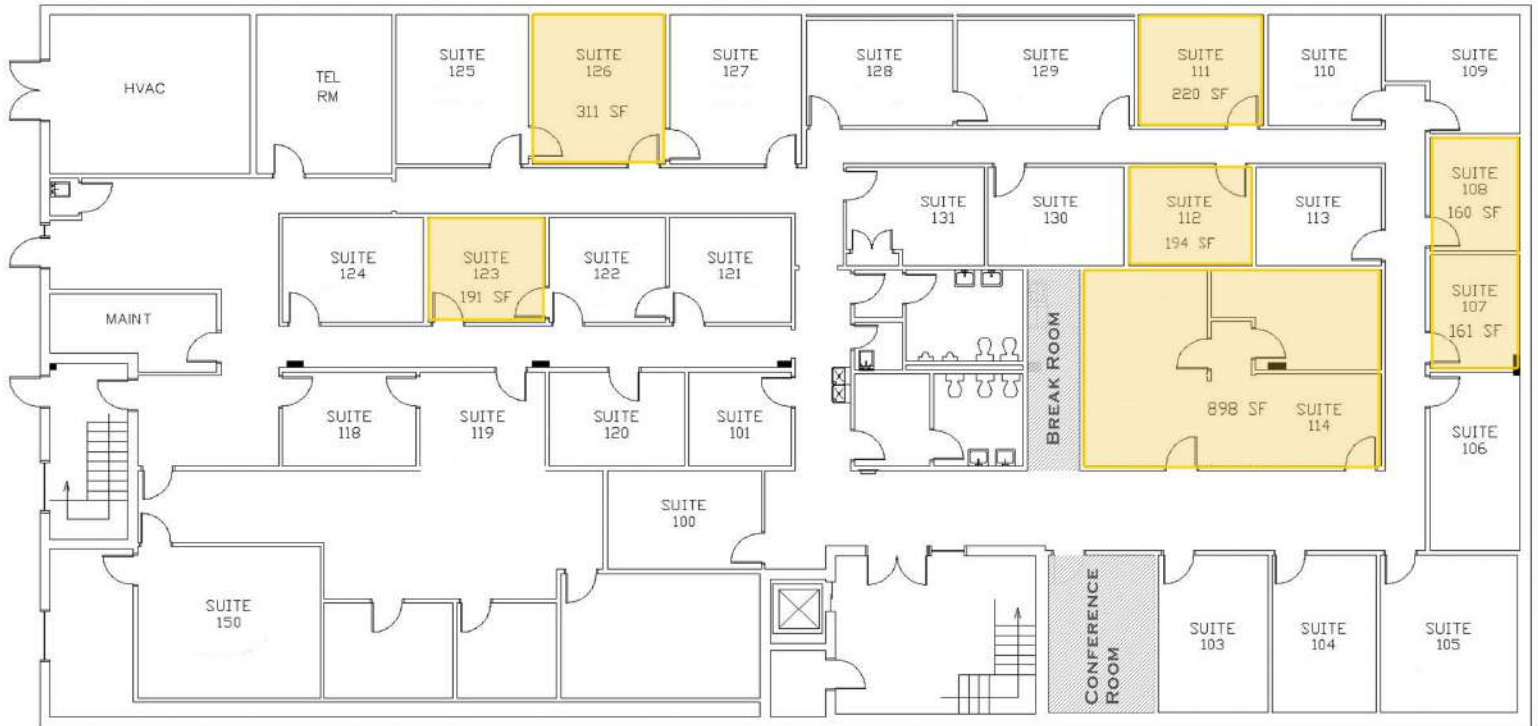
www.beacondevelopment.com



801 E MOREHEAD STREET

801 EAST MOREHEAD STREET | EXECUTIVE SUITES | CHARLOTTE, NC 28202

AVAILABLE EXECUTIVE SUITES:



FOR MORE INFORMATION, CONTACT:

KRISTY VENNING

704.926.1409 | kristy@beacondevelopment.com

500 East Morehead Street | Suite 200 | Charlotte, NC 28202

www.beacondevelopment.com

