

# 801 E MOREHEAD STREET

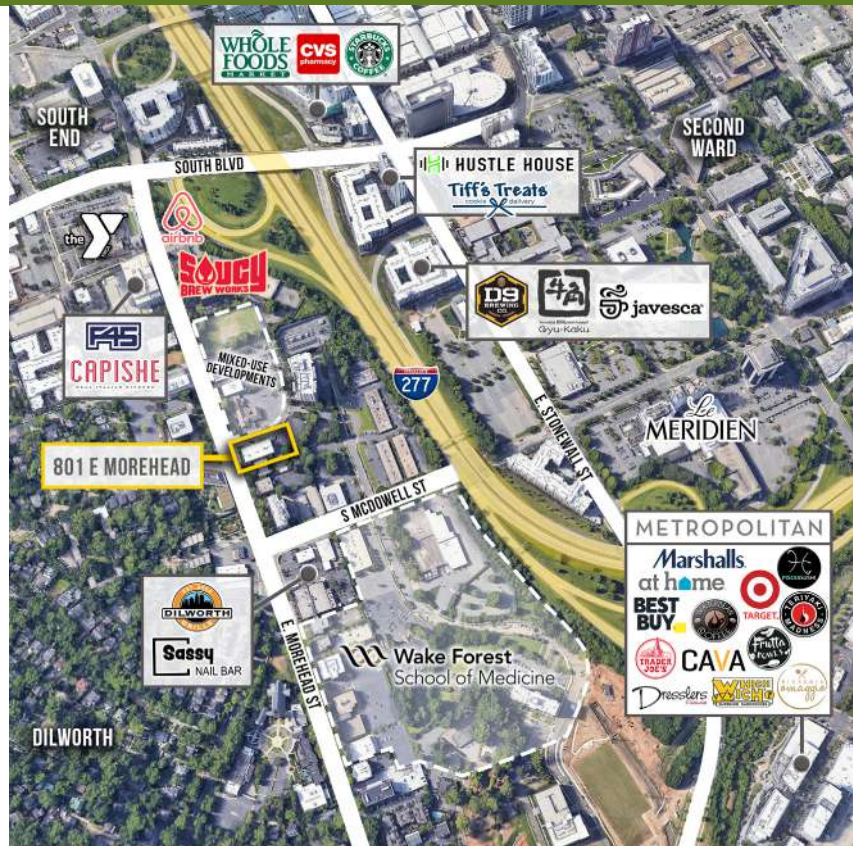
801 EAST MOREHEAD STREET | EXECUTIVE SUITES | CHARLOTTE, NC 28202



OFFICE SPACE IN MIDTOWN FOR LEASE

## 150 SF & UP SF

- Move-in ready suites
- Access to signalized light on E. Morehead Street
- Excellent visibility
- Free & secured surface parking
- Numerous amenities located within immediate area, including restaurants, retail (Metropolitan) and the Dowd YMCA
- Minutes from I-77, I-277, and Uptown Charlotte
- Beacon Partners owns, leased and manages over 1 million in the Midtown and South End areas



FOR MORE INFORMATION, CONTACT:

**CLAIRE SHEALY**

704.926.1409 | [claire@beacondevelopment.com](mailto:claire@beacondevelopment.com)

500 East Morehead Street | Suite 200 | Charlotte, NC 28202

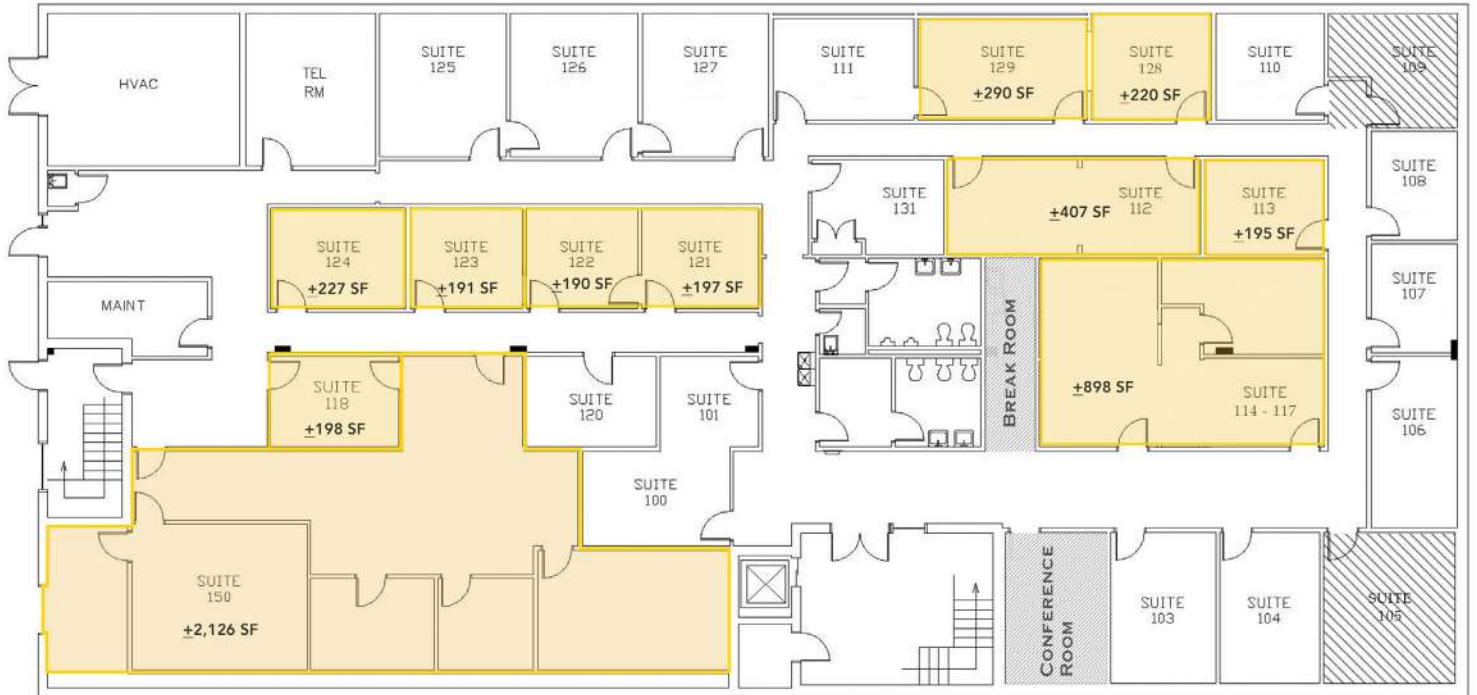
[www.beacondevelopment.com](http://www.beacondevelopment.com)



# 801 E MOREHEAD STREET

801 EAST MOREHEAD STREET | EXECUTIVE SUITES | CHARLOTTE, NC 28202

## AVAILABLE EXECUTIVE SUITES:



FOR MORE INFORMATION, CONTACT:

**CLAIRE SHEALY**

704.926.1409 | [claire@beacondevelopment.com](mailto:claire@beacondevelopment.com)

500 East Morehead Street | Suite 200 | Charlotte, NC 28202

[www.beacondevelopment.com](http://www.beacondevelopment.com)



All information regarding the property was obtained from sources deemed reliable but no warranty or representation is made of the accuracy thereof, and the property is subject to prior sale, lease or withdrawal.