

# 801 E MOREHEAD STREET

801 EAST MOREHEAD STREET | EXECUTIVE SUITES | CHARLOTTE, NC 28202



## OFFICE SPACE IN MIDTOWN FOR LEASE

### 150 SF & UP SF

- Move-in ready, furnished suites available
- Access to signalized light on E. Morehead Street
- Excellent visibility
- Free & secured surface parking
- Numerous amenities located within immediate area, including restaurants, retail (Metropolitan) and the Dowd YMCA
- Minutes from I-77, I-277, and Uptown Charlotte
- Beacon Partners owns, leased and manages over 1 million in the Midtown and South End areas



FOR MORE INFORMATION, CONTACT:

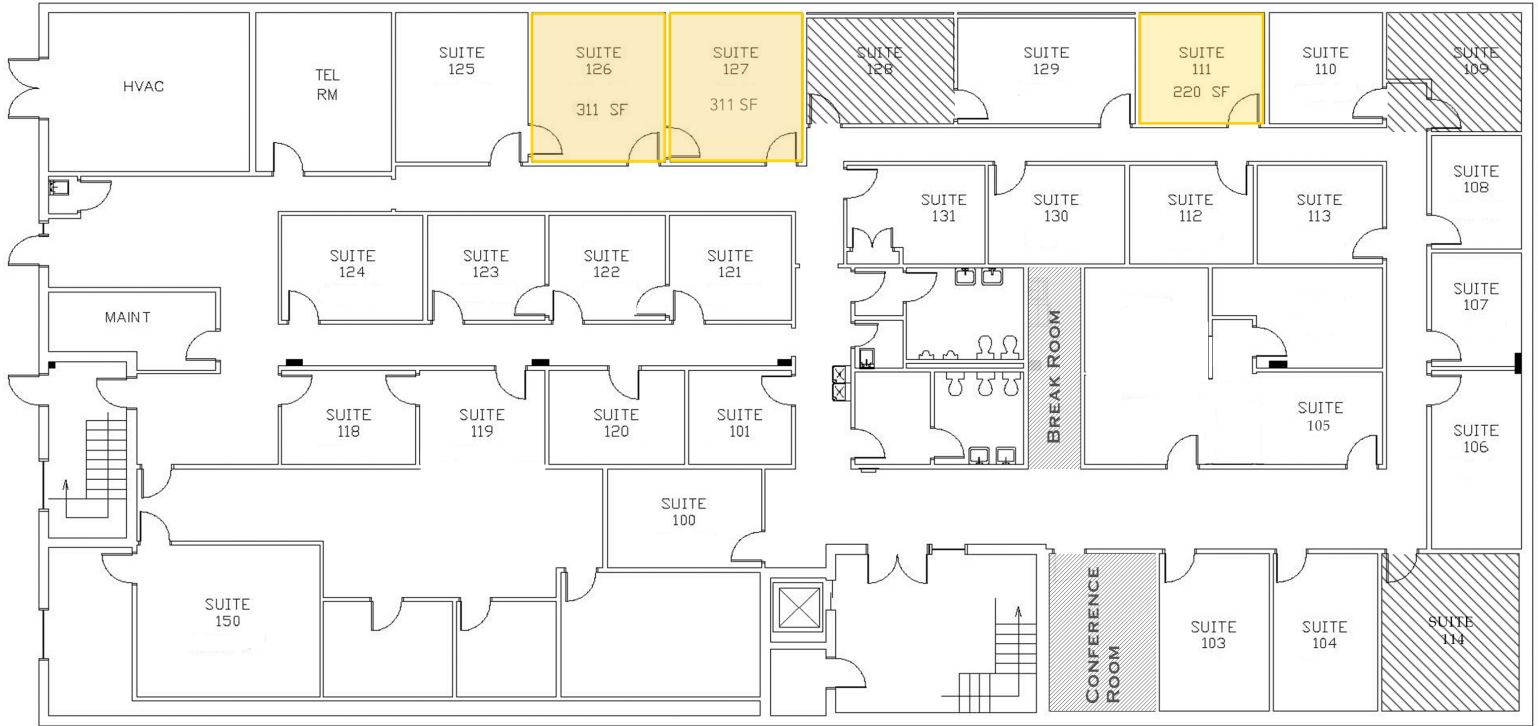
**ERIN SHAW**  
704.926.1414 | [erin@beacondevelopment.com](mailto:erin@beacondevelopment.com)  
500 East Morehead Street | Suite 200 | Charlotte, NC 28202  
[www.beacondevelopment.com](http://www.beacondevelopment.com)



# 801 E MOREHEAD STREET

801 EAST MOREHEAD STREET | EXECUTIVE SUITES | CHARLOTTE, NC 28202

## AVAILABLE EXECUTIVE SUITES:



FOR MORE INFORMATION, CONTACT:

**ERIN SHAW**  
704.926.1414 | [erin@beacondevelopment.com](mailto:erin@beacondevelopment.com)  
500 East Morehead Street | Suite 200 | Charlotte, NC 28202  
[www.beacondevelopment.com](http://www.beacondevelopment.com)

