

801 E MOREHEAD STREET

EXECUTIVE SUITES | CHARLOTTE, NC 28202



OFFICE SPACE IN MIDTOWN
AVAILABLE FOR LEASE

150 SF & UP SF

- Move-in ready, furnished suites available
- Access to signalized light on E. Morehead Street
- Excellent visibility
- Free & secured surface parking
- Numerous amenities located within immediate area, including restaurants, retail (Metropolitan) and the Dowd YMCA
- Minutes from I-77, I-277 and Uptown Charlotte
- Beacon Partners owns, leases and manages over ±1,000,000 SF in the Midtown and South End areas



FOR MORE INFORMATION, CONTACT:

KRISTY VENNING

704.926.1409 (d)

kristy@beacondevelopment.com

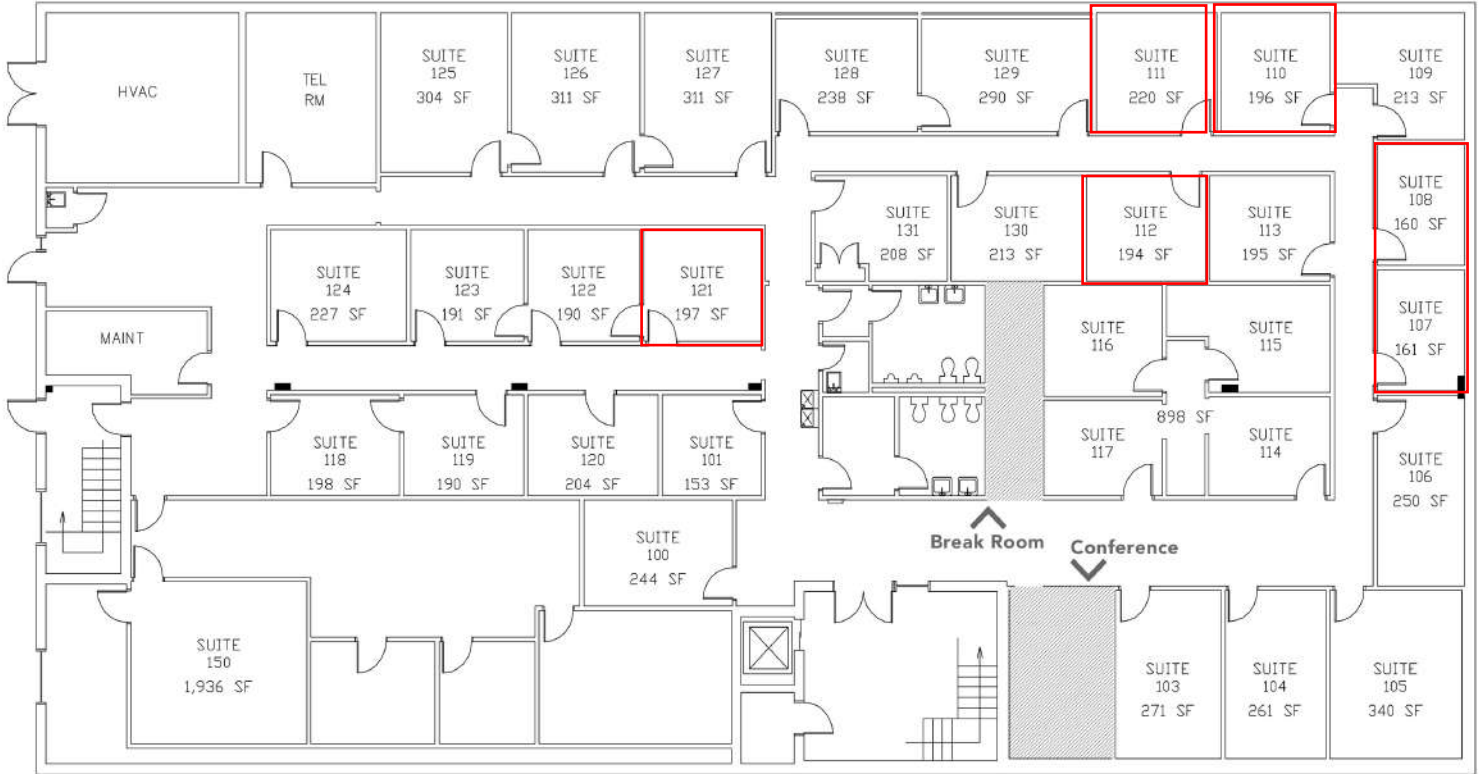
500 E. Morehead Street | Suite 200 | Charlotte, NC 28202 | beacondevelopment.com



801 E MOREHEAD STREET

EXECUTIVE SUITES | CHARLOTTE, NC 28202

AVAILABLE EXECUTIVE SUITES



FOR MORE INFORMATION, CONTACT:

KRISTY VENNING

704.926.1409 (d)

kristy@beacondevelopment.com

500 E. Morehead Street | Suite 200 | Charlotte, NC 28202 | beacondevelopment.com



All information regarding the property was obtained from sources deemed reliable but no warranty or representation is made of the accuracy thereof, and the property is subject to prior sale, lease or withdrawal.