

# 801 E MOREHEAD STREET

801 EAST MOREHEAD STREET | SUITE 301 | CHARLOTTE, NC 28202



OFFICE SPACE IN MIDTOWN AVAILABLE FOR LEASE

**4,224 SF**

- Floor to ceiling glass
- Views of Morehead Street and Uptown Charlotte
- Monument signage opportunity
- Excellent visibility
- Free gated parking
- Numerous amenities located within immediate area, including restaurants, retail (Metropolitan) and the Dowd YMCA
- Minutes from I-77, I-277, and Uptown Charlotte
- Beacon Partners owns, leased and manages over 1 million in the Midtown and South End areas



FOR MORE INFORMATION, CONTACT:

**ERIN SHAW**  
704.926.1414 (d) [erin@beacondevelopment.com](mailto:erin@beacondevelopment.com)  
500 East Morehead Street | Suite 200 | Charlotte, NC 28202  
[www.beacondevelopment.com](http://www.beacondevelopment.com)

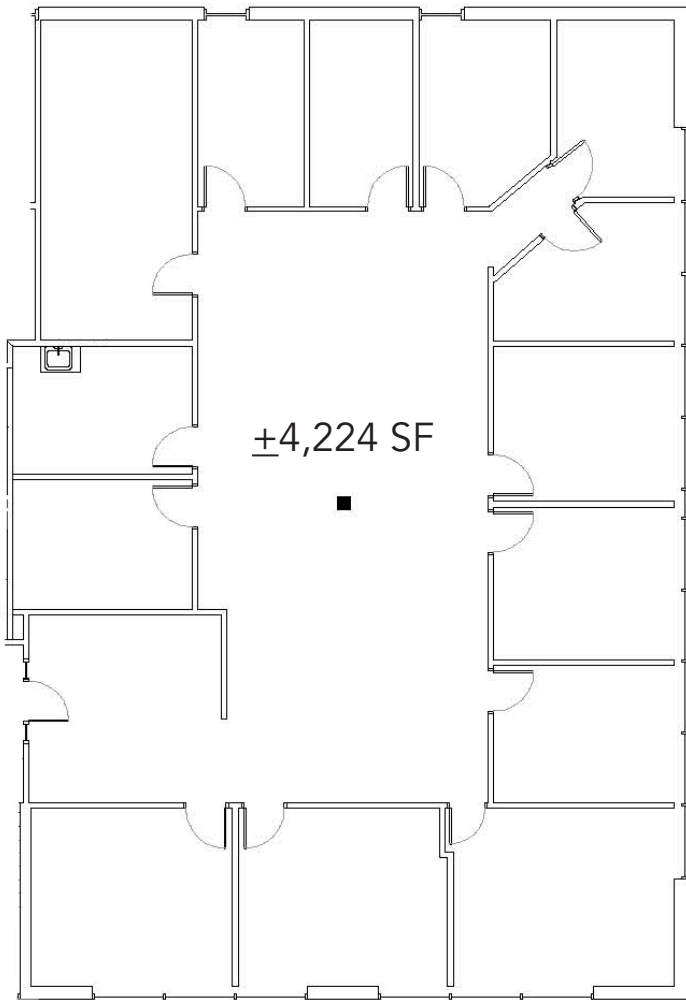
**KRISTY VENNING**  
704.926.1409 (d) [kristy@beacondevelopment.com](mailto:kristy@beacondevelopment.com)  
500 East Morehead Street | Suite 200 | Charlotte, NC 28202  
[www.beacondevelopment.com](http://www.beacondevelopment.com)



# 801 E MOREHEAD STREET

801 EAST MOREHEAD STREET | SUITE 301 | CHARLOTTE, NC 28202

## FLOOR PLAN:



FOR MORE INFORMATION, CONTACT:

**ERIN SHAW**  
**704.926.1414 (d) [erin@beacondevelopment.com](mailto:erin@beacondevelopment.com)**  
500 East Morehead Street | Suite 200 | Charlotte, NC 28202  
[www.beacondevelopment.com](http://www.beacondevelopment.com)

**KRISTY VENNING**  
**704.926.1409 (d) [kristy@beacondevelopment.com](mailto:kristy@beacondevelopment.com)**  
500 East Morehead Street | Suite 200 | Charlotte, NC 28202  
[www.beacondevelopment.com](http://www.beacondevelopment.com)

