



801 East Morehead

EXECUTIVE SUITES
CHARLOTTE, NC 28202

EXECUTIVE SUITES FOR LEASE

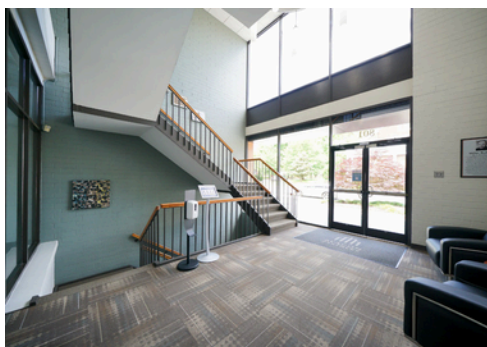
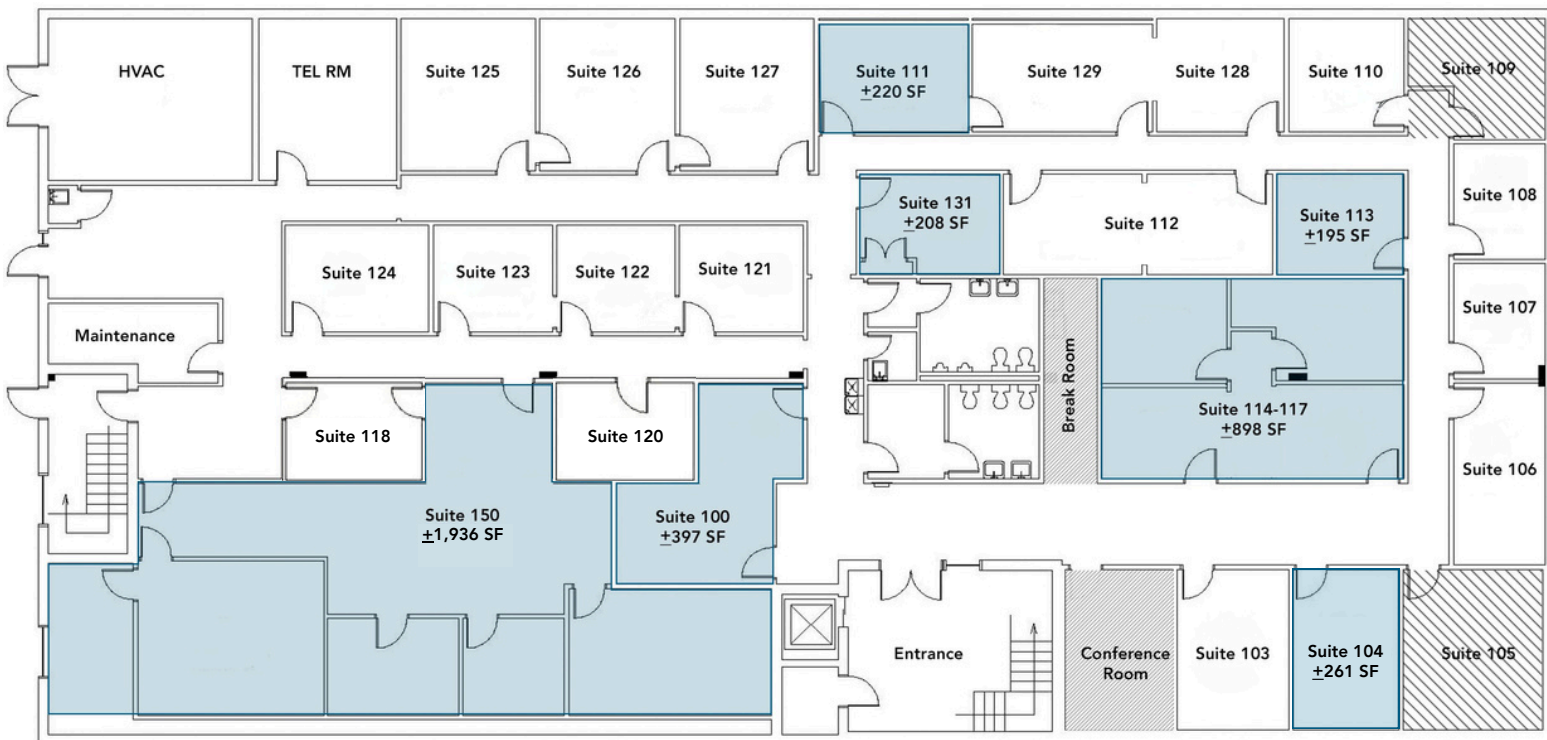
- Three-story office building, $\pm 30,549$ total SF
- Move-in ready suites ranging from ± 195 SF and up
- Free and secured surface parking
- A mix of private working spaces and collaboration areas
- Excellent visibility at a signalized light on E Morehead Street
- $\pm 2,000$ multifamily residential units under construction in the immediate area
- Situated in the heart of Charlotte's Midtown market, adjacent to Uptown, the Atrium Pearl District Campus and access to I-277/I-77
- Walkable to Carson Light Rail and numerous Midtown and South End restaurants and amenities



801 East Morehead

EXECUTIVE SUITES
CHARLOTTE, NC 28202

EXECUTIVE SUITES: ± 195 SF AND UP



SURROUNDING AMENITIES

801 East Morehead

EXECUTIVE SUITES
CHARLOTTE, NC 28202



Beacon Partners is a commercial real estate firm specializing in the development, acquisition, and operation of industrial, office and mixed-use properties. Beacon leases, owns or manages more than 17.5+ million square feet of space throughout the Carolinas.