



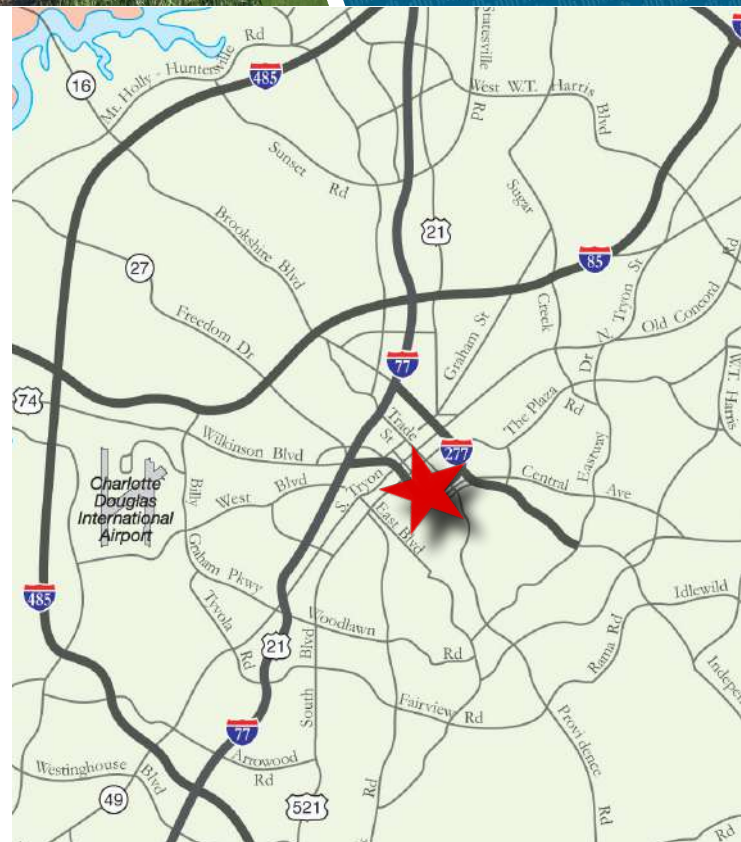
BEACON
PARTNERS

801 East Morehead

EXECUTIVE SUITES
CHARLOTTE, NC 28202

±150 SF & UP OFFICE SPACE FOR LEASE

- Three-story office building, ±30,549 total SF
- Move-in ready suites
- Free and secured surface parking
- Excellent visibility at a signalized light on E Morehead Street
- ±3,000 multifamily residential units planned in the immediate area
- Situated in the heart of Charlotte's Midtown market, adjacent to Uptown, the Atrium Pearl District Campus and access to I-277/I-77
- Walkable to Carson Light Rail and numerous Midtown and South End restaurants and amenities



FOR MORE INFORMATION, CONTACT:

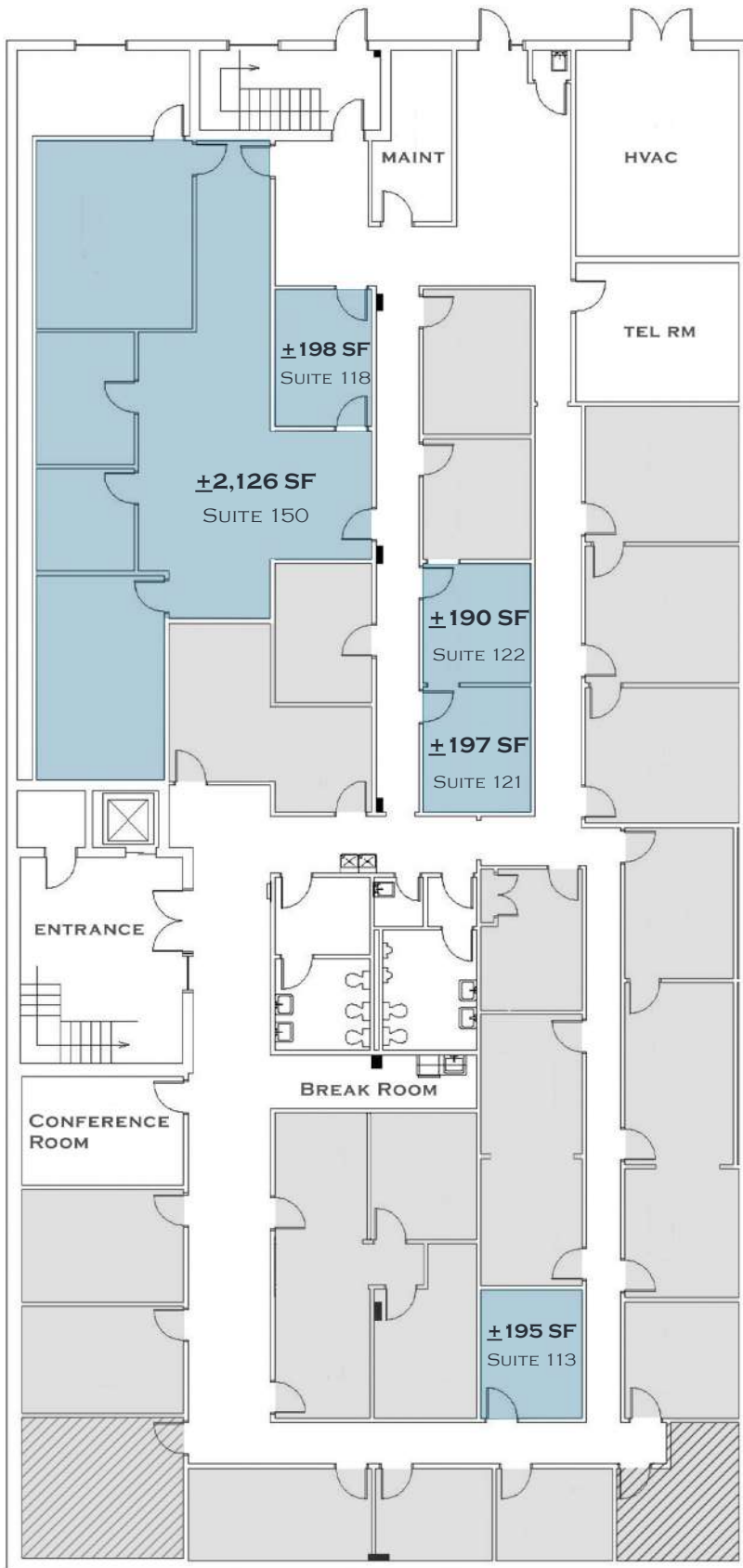
CLAIRE SHEALY

704.926.1409 (d) | claire@beacondevelopment.com

www.beacondevelopment.com

801 East Morhead

EXECUTIVE SUITES
CHARLOTTE, NC 28202



FOR MORE INFORMATION, CONTACT:

CLAIRE SHEALY

704.926.1409 (d) | claire@beacondevelopment.com

www.beacondevelopment.com

SURROUNDING AMENITIES

801 East Morehead

EXECUTIVE SUITES
CHARLOTTE, NC 28202



Beacon Partners is a commercial real estate firm specializing in the development, acquisition, and operation of industrial, office and mixed-use properties. Beacon leases, owns or manages more than 14.5+ million square feet of space throughout the Carolinas.



Investing in the future of our community

FOR MORE INFORMATION, CONTACT:

CLAIRE SHEALY

704.926.1409 (d) | claire@beacondevelopment.com

www.beacondevelopment.com