



# 801 East Morehead

SUITE 200  
CHARLOTTE, NC 28202

## ±10,607 SF OFFICE FOR LEASE

- Three-story office building, ±30,549 total SF
- Move-in ready suite
- Free and secured surface parking
- A mix of private working spaces and collaboration areas
- Excellent visibility at a signalized light on E Morehead Street
- ±2,000 multifamily residential units under construction in the immediate area
- Situated in the heart of Charlotte's Midtown market, adjacent to Uptown, the Atrium Pearl District Campus and access to I-277/I-77
- Walkable to Carson Light Rail and numerous Midtown and South End restaurants and amenities



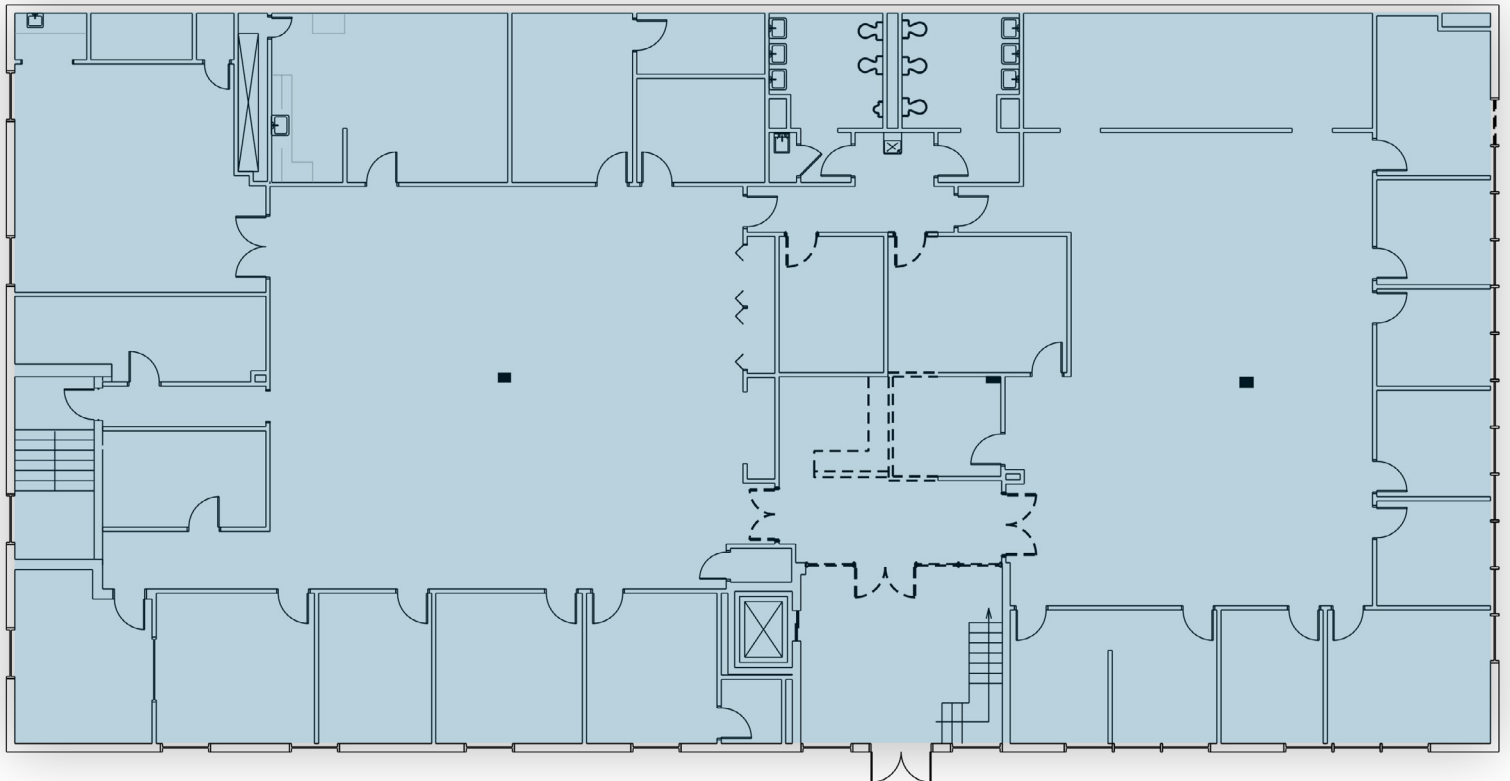


TAKE A TOUR

# 801 East Morehead

SUITE 200  
CHARLOTTE, NC 28202

SUITE 200: ±10,607 SF



# SURROUNDING AMENITIES

# 801 East Morehead

SUITE 200  
CHARLOTTE, NC 28202



Beacon Partners is a commercial real estate firm specializing in the development, acquisition, and operation of industrial, office and mixed-use properties. Beacon leases, owns or manages more than 17.5+ million square feet of space throughout the Carolinas.



**CLAIRE SHEALY**  
704.607.1984 (c) | 704.926.1409 (d)  
claire@beacondevelopment.com