



# 801 East Morehead

SUITE 200  
CHARLOTTE, NC 28203

**±10,607 SF OFFICE FOR LEASE**

- Three-story office building, ±30,549 total SF
- Move-in ready suite
- Free and secured surface parking
- A mix of private working spaces and collaboration areas
- Excellent visibility at a signalized light on E Morehead Street
- ±3,000 multifamily residential units planned in the immediate area
- Situated in the heart of Charlotte's Midtown market, adjacent to Uptown, the Atrium Pearl District Campus and access to I-277/I-77
- Walkable to Carson Light Rail and numerous Midtown and South End restaurants and amenities



FOR MORE INFORMATION, CONTACT:

**CLAIRE SHEALY**

704.926.1409 (d) | [claire@beacondevelopment.com](mailto:claire@beacondevelopment.com)

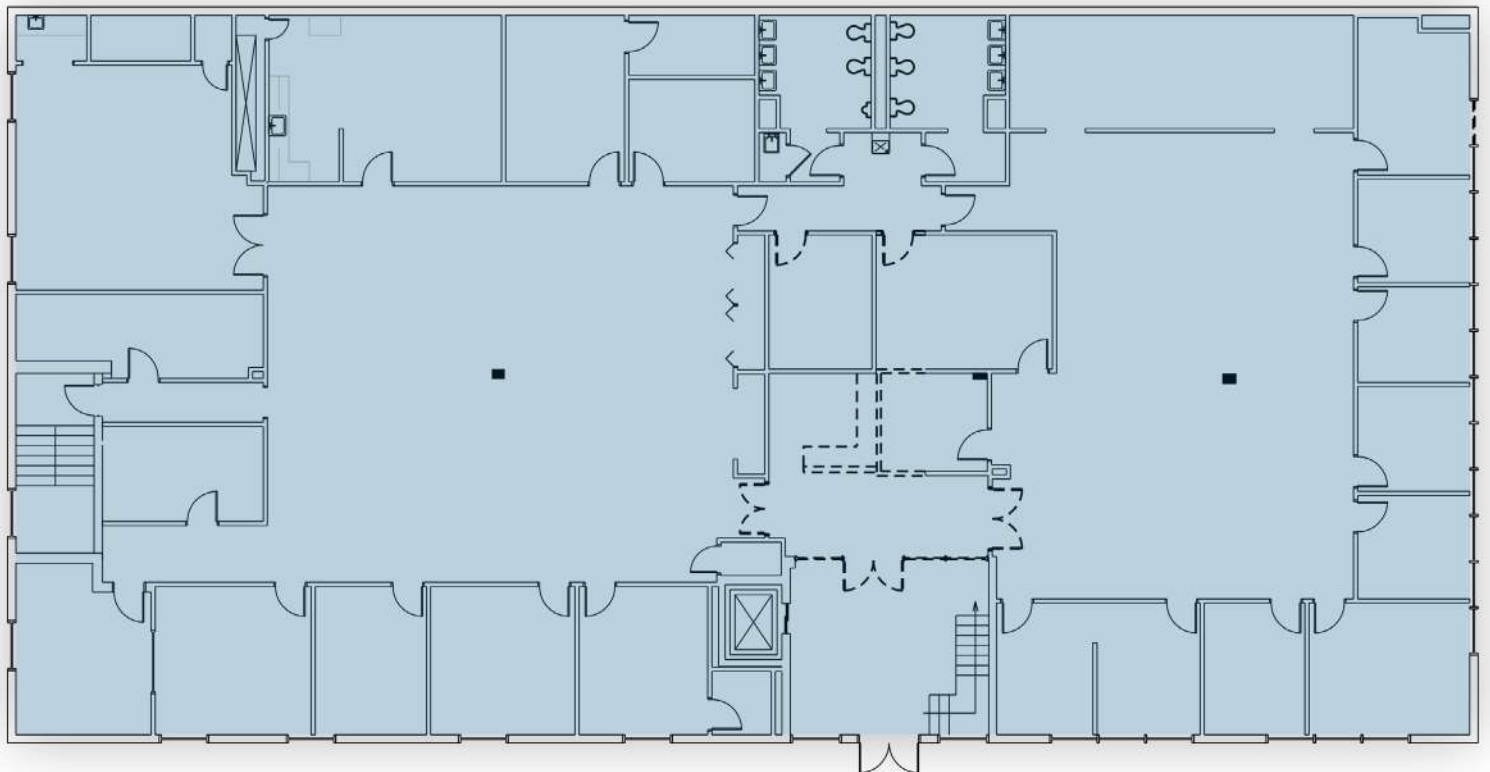
[www.beacondevelopment.com](http://www.beacondevelopment.com)



# 801 East Morehead

SUITE 200  
CHARLOTTE, NC 28203

SUITE 200:  $\pm 10,607$  SF



FOR MORE INFORMATION, CONTACT:

**CLAIRE SHEALY**

704.926.1409 (d) | [claire@beacondevelopment.com](mailto:claire@beacondevelopment.com)

[www.beacondevelopment.com](http://www.beacondevelopment.com)

## SURROUNDING AMENITIES

# 801 East Morehead

SUITE 200  
CHARLOTTE, NC 28203



Beacon Partners is a commercial real estate firm specializing in the development, acquisition, and operation of industrial, office and mixed-use properties. Beacon leases, owns or manages more than 14.5+ million square feet of space throughout the Carolinas.



FOR MORE INFORMATION, CONTACT:

**CLAIRE SHEALY**

704.926.1409 (d) | [claire@beacondevelopment.com](mailto:claire@beacondevelopment.com)

[www.beacondevelopment.com](http://www.beacondevelopment.com)