



801 East Morehead

SUITE 301
CHARLOTTE, NC 28202

±4,224 SF OFFICE FOR LEASE

- Three-story office building, ±30,549 total SF
- Move-in ready, furnished suite
- Free and secured surface parking
- A mix of private working spaces and collaboration areas
- Excellent visibility at a signalized light on E Morehead Street
- ±2,000 multifamily residential units under construction in the immediate area
- Situated in the heart of Charlotte's Midtown market, adjacent to Uptown, the Atrium Pearl District Campus and access to I-277/I-77
- Walkable to Carson Light Rail and numerous Midtown and South End restaurants and amenities



FOR MORE INFORMATION, CONTACT:

CLAIRE SHEALY

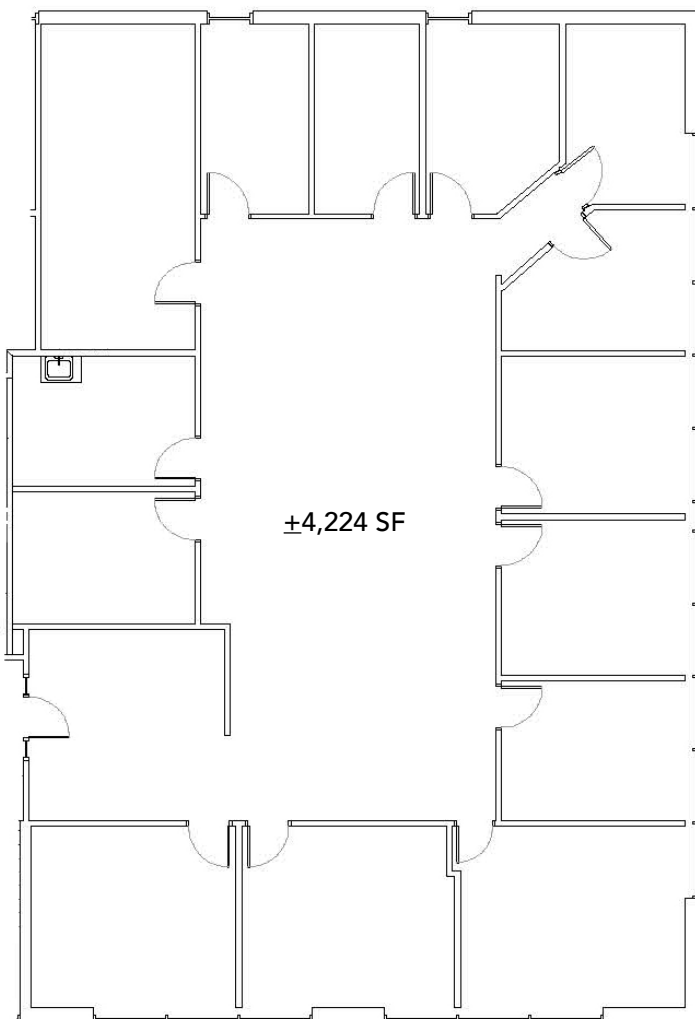
704.607.1984 (c) | claire@beacondevelopment.com

www.beacondevelopment.com

801 East Morehead

SUITE 301
CHARLOTTE, NC 28202

SUITE 301: $\pm 4,224$ SF



SURROUNDING AMENITIES

801 East Morehead

SUITE 301
CHARLOTTE, NC 28202



Beacon Partners is a commercial real estate firm specializing in the development, acquisition, and operation of industrial, office and mixed-use properties. Beacon leases, owns or manages more than 17.5+ million square feet of space throughout the Carolinas.



FOR MORE INFORMATION, CONTACT:

CLAIRE SHEALY

704.607.1984 (c) | claire@beacondevelopment.com

www.beacondevelopment.com