

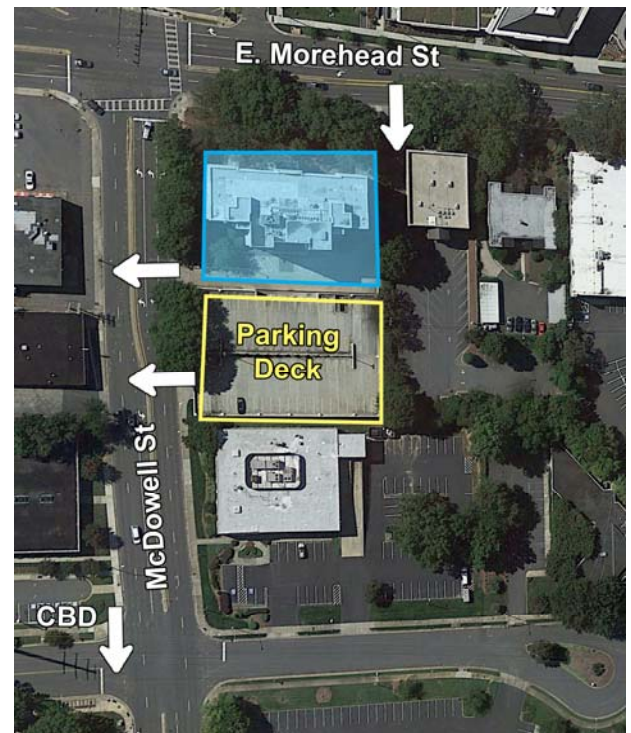
THE ADDISON

831 E MOREHEAD STREET, #355 | CHARLOTTE, NC 28202



OFFICE SPACE IN MIDTOWN AVAILABLE FOR LEASE 2,713 SF

- 68,000 SF, nine-story office building
- Two open space with two offices on the glass overlooking E. Morehead St
- Built in 1926 as Charlotte's first luxury condominium; Converted to office and expanded in 1997
- Abundant parking with a covered deck at a 3 per 1,000 SF ratio
- Three points of ingress/egress at the E. Morehead Street McDowell Street intersection
- Excellent visibility at signalized intersection
- Registered as a local Historic Landmark
- Ideal location between Dilworth, Midtown and CBD, with easy access to I-77 & I-277
- Numerous amenities nearby including Dowd YMCA, the Metropolitan, restaurants/retail, Art's BBQ and Deli, The Little Sugar Creek Greenway and Carolinas Healthcare Main Campus
- Beacon Partners owns, leases and manages $\pm 800,000$ SF in the Midtown and South End areas



FOR MORE INFORMATION, CONTACT:

KRISTY VENNING

704.926.1409 (d) 540.420.9351 (m)

kristy@becondevelopment.com

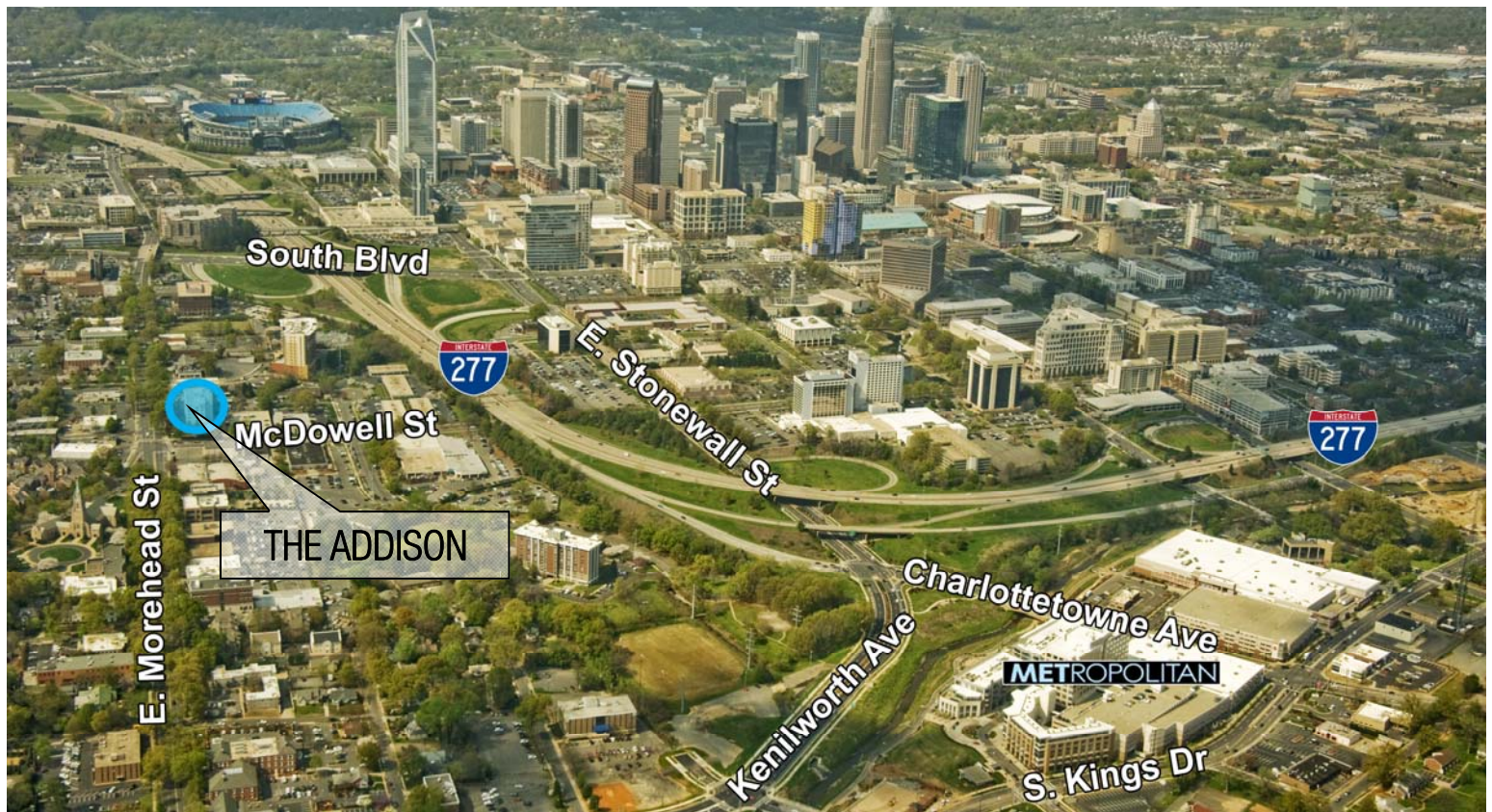
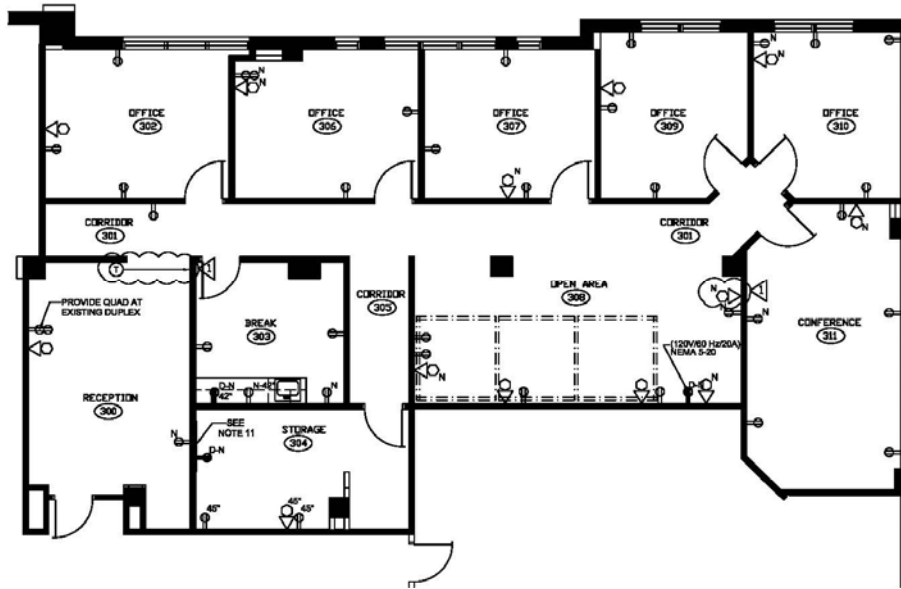
500 E. Morehead Street | Suite 200 | Charlotte, NC 28202 | becondevelopment.com



THE ADDISON

831 E MOREHEAD STREET, #355 | CHARLOTTE, NC 28202

SUITE 355: 2,713 SF



FOR MORE INFORMATION, CONTACT:

KRISTY VENNING

704.926.1409 (d) 540.420.9351 (m)

kristy@beconddevelopment.com

500 E. Morehead Street | Suite 200 | Charlotte, NC 28202 | beaconddevelopment.com



All information regarding the property was obtained from sources deemed reliable but no warranty or representation is made of the accuracy thereof, and the property is subject to prior sale, lease or withdrawal.