

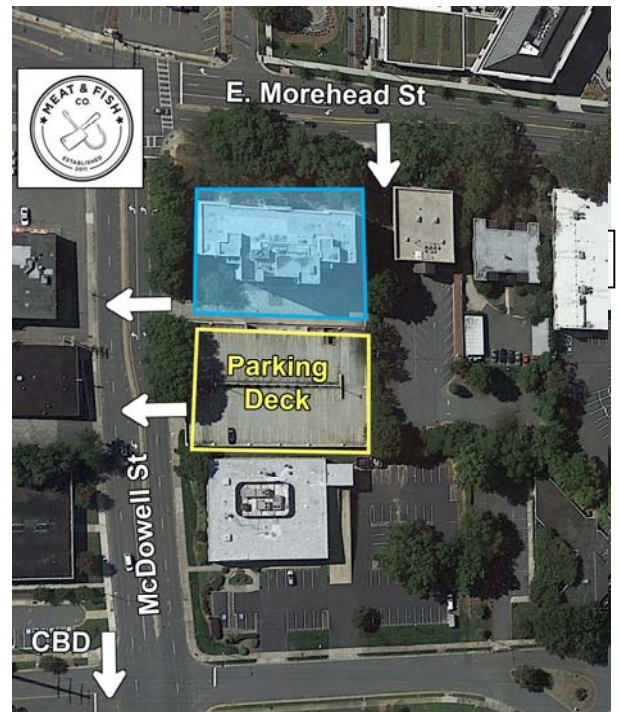
THE ADDISON

831 E. MOREHEAD STREET
CHARLOTTE | NC 28202



AVAILABLE FOR LEASE | OFFICE SPACE IN MIDTOWN
2,412 SF

- 68,000 SF, nine-story office building
- Private offices and open area
- Built in 1926 as Charlotte's first luxury condominium; Converted to office and expanded in 1997
- Abundant parking with a covered deck at a 3 per 1,000 SF ratio
- Three points of ingress/egress at the E. Morehead Street McDowell Street intersection
- Excellent visibility at signalized intersection
- Registered as a local Historic Landmark
- Ideal location between Dilworth, Midtown and CBD, with easy access to I-77 & I-277
- Numerous amenities nearby including Dowd YMCA, the Metropolitan, restaurants/retail, Meat and Fish Co., Art's BBQ and Deli, The Little Sugar Creek Greenway and Carolinas Healthcare Main Campus
- Beacon Partners owns, leases and manages approximately 800,000 SF in the Midtown and South End areas



610 E. Morehead Street | Suite 250
Charlotte, NC 28202

www.beacondevelopment.com

FOR MORE INFORMATION, CONTACT:

Kristy Venning
704.926.1409
kristy@beacondevelopment.com

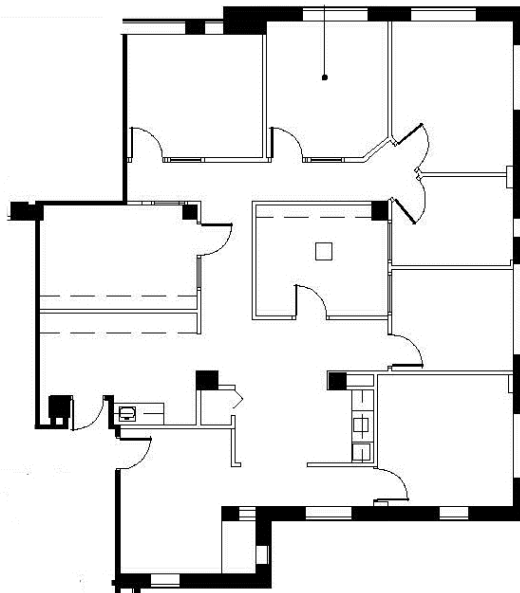


THE ADDISON

831 E. MOREHEAD STREET
CHARLOTTE | NC 28202



SUITE 460



610 E. Morehead Street | Suite 250
Charlotte, NC 28202

www.beacondevelopment.com

FOR MORE INFORMATION, CONTACT:

Kristy Venning
704.926.1409
kristy@beacondevelopment.com

