

# THE ADDISON

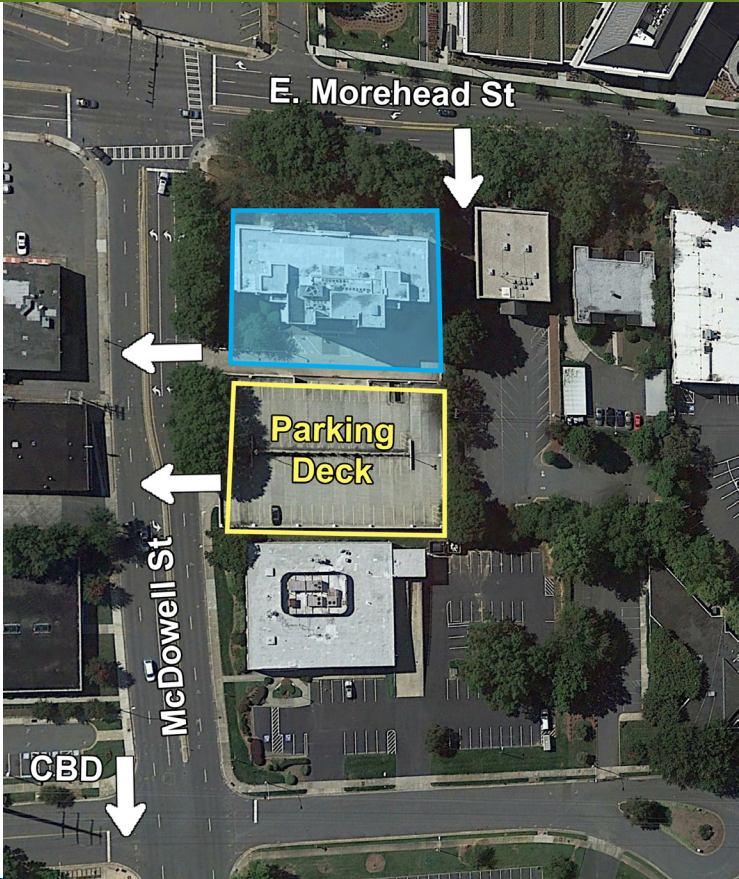
831 E. MOREHEAD STREET, 7TH FLOOR | CHARLOTTE, NC 28202



OFFICE SPACE IN MIDTOWN AVAILABLE FOR LEASE

## ±5,087 SF

- Nine-story office building, ±68,000 SF
- An upper floor, corner suite with Uptown views
- Built in 1926 as Charlotte's first luxury condominium; Converted to office and expanded in 1997
- Abundant parking with a covered deck at a 3 per 1,000 SF ratio
- Excellent visibility at signalized intersection
- Registered as a local Historic Landmark
- Ideal location between Dilworth, Midtown, Southend and CBD, with easy access to I-77 & I-277
- Numerous amenities nearby including Dowd YMCA, the Metropolitan, restaurants/retail, The Little Sugar Creek Greenway and Atrium Health's Main Campus
- Beacon Partners leases and manages over 1 million SF in the Midtown and South End areas



FOR MORE INFORMATION, CONTACT:

**KRISTY VENNING**

704.926.1409 | [kristy@beacondevelopment.com](mailto:kristy@beacondevelopment.com)

500 East Morehead Street | Suite 200 | Charlotte, NC 28202

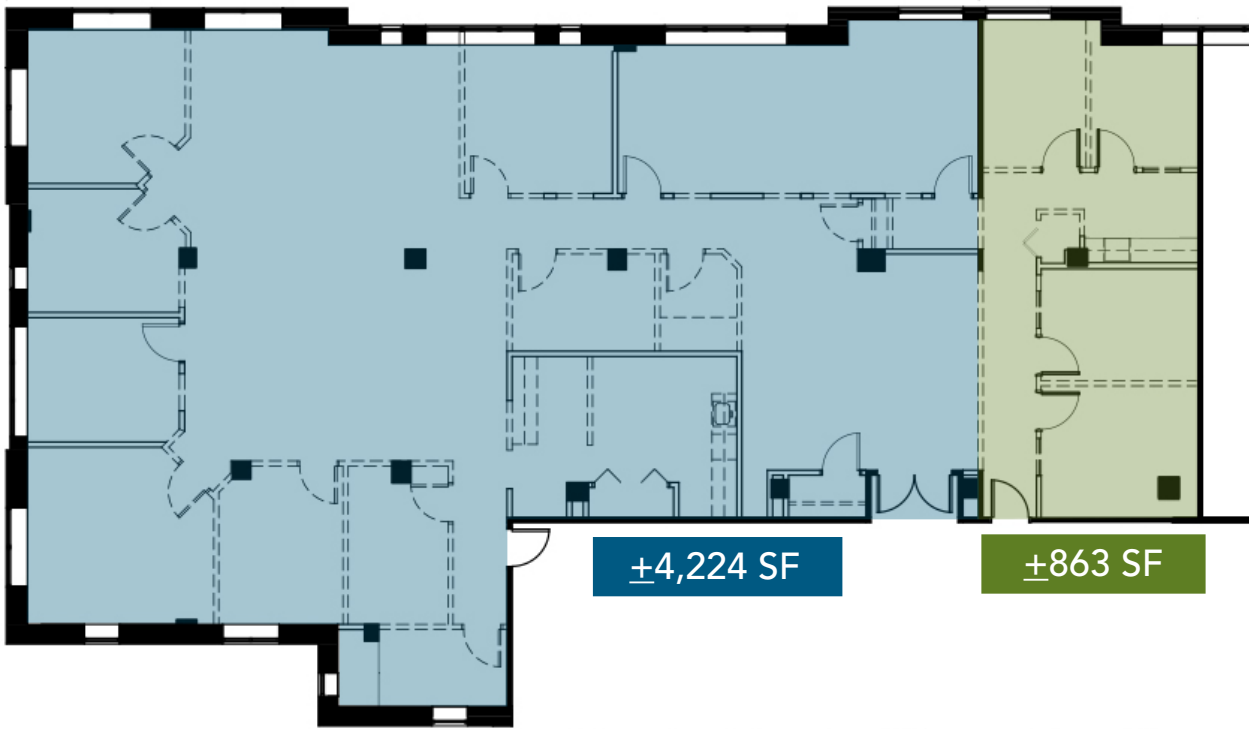
[www.beacondevelopment.com](http://www.beacondevelopment.com)



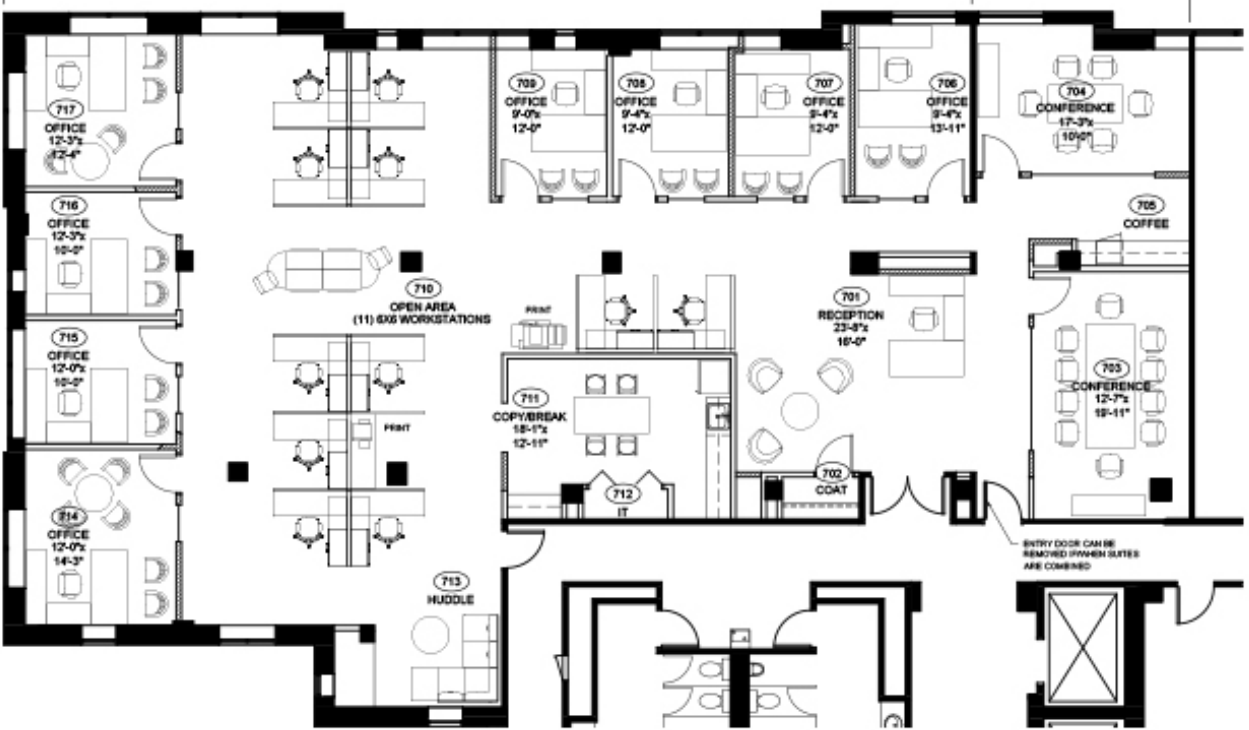
# THE ADDISON

831 E. MOREHEAD STREET, 7TH FLOOR | CHARLOTTE, NC 28202

7TH FLOOR: +/-5,087 SF



SPEC PLAN:



FOR MORE INFORMATION, CONTACT:

**KRISTY VENNING**  
704.926.1409 | [kristy@beacondevelopment.com](mailto:kristy@beacondevelopment.com)  
500 East Morehead Street | Suite 200 | Charlotte, NC 28202  
[www.beacondevelopment.com](http://www.beacondevelopment.com)



All information regarding the property was obtained from sources deemed reliable but no warranty or representation is made of the accuracy thereof, and the property is subject to prior sale, lease or withdrawal.