

The Addison

831 E MOREHEAD, CHARLOTTE, NC

NINE-STORY
±76,802 SF
OFFICE BUILDING

BUILT IN 1926

as Charlotte's first luxury condominium,
converted to office and expanded in 1997.
Registered as a local Historic Landmark

ABUNDANT FREE
PARKING

with a covered deck at a 3 per 1,000 SF ratio

A STANDOUT
ARCHITECTURAL TREASURE

The Addison seamlessly blends historic
grandeur with modern-day utility.



EXCELLENT VISIBILITY
AT A SIGNALIZED INTERSECTION AT
THE CORNER OF
S. MCDOWELL STREET AND
E. MOREHEAD STREET

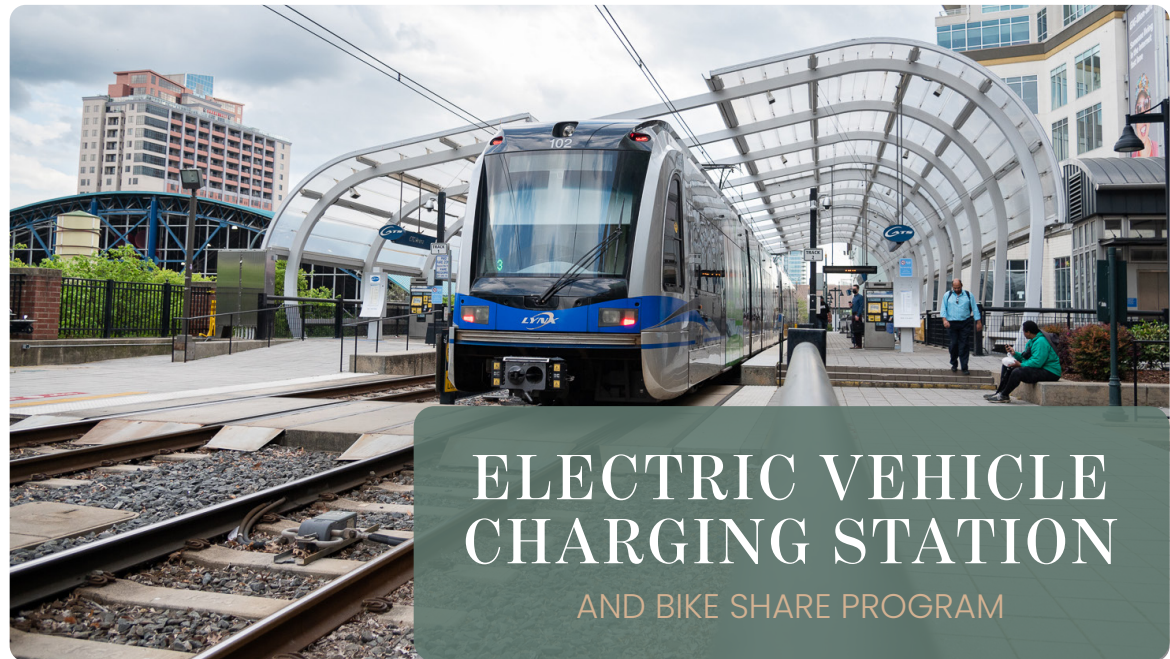
SITUATED

IN THE HEART OF CHARLOTTE'S MIDTOWN
MARKET, ADJACENT TO UPTOWN, THE
ATRIUM PEARL DISTRICT CAMPUS AND
EASY ACCESS TO I-277/I-77

WALKABLE TO
CARSON LIGHT RAIL STATION
AND NUMEROUS MIDTOWN
& SOUTH END RESTAURANTS
AND AMENITIES

+3,000 MULTIFAMILY

RESIDENTIAL UNITS IN THE
IMMEDIATE AREA



**ELECTRIC VEHICLE
CHARGING STATION**

AND BIKE SHARE PROGRAM

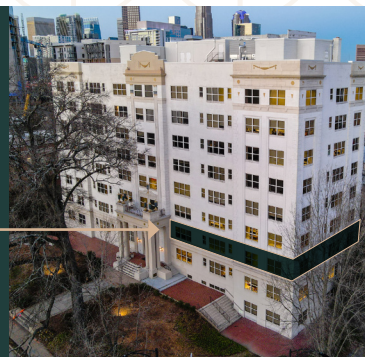
The
Addison



Floor Plans

± 3,901 SF

Suite 255



KEY PLAN

► VIRTUAL TOUR

For additional information,
please contact:

Claire Shealy Lovette

MOBILE: 704.607.1984

DIRECT: 704.926.1409

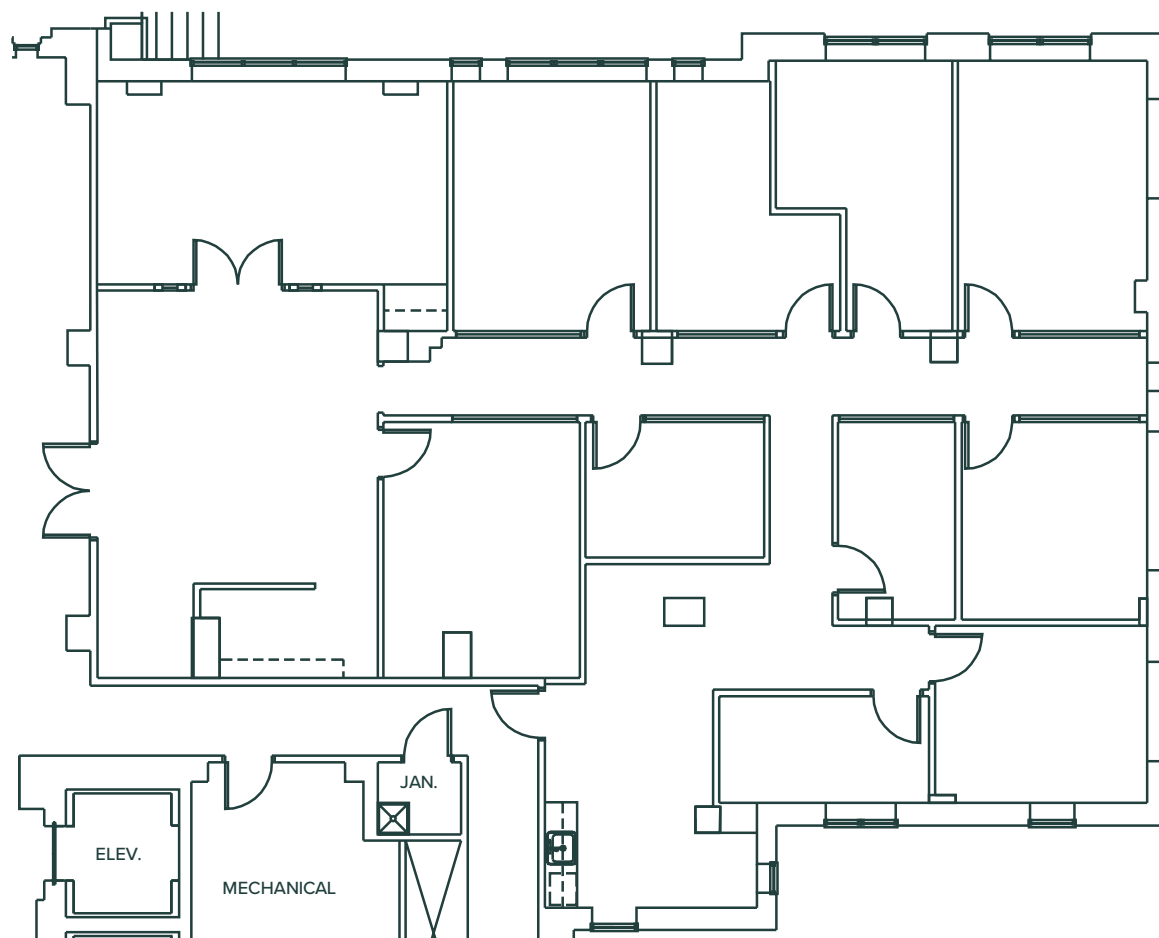
claire@beacondevelopment.com

William Mann

MOBILE: 901.210.3908

DIRECT: 919.261.7566

william@beacondevelopment.com



The Addison

Beacon Partners is a commercial real estate firm specializing in the development, acquisition, and operation of industrial, office and mixed-use properties. Beacon leases, owns or manages more than 14.5+ million square feet of space throughout the Carolinas.

For additional information, please contact:

Claire Shealy Lovette
 MOBILE: 704.607.1984
 DIRECT: 704.926.1409
claire@beacondevelopment.com

William Mann
 MOBILE: 901.210.3908
 DIRECT: 919.261.7566
claire@beacondevelopment.com

