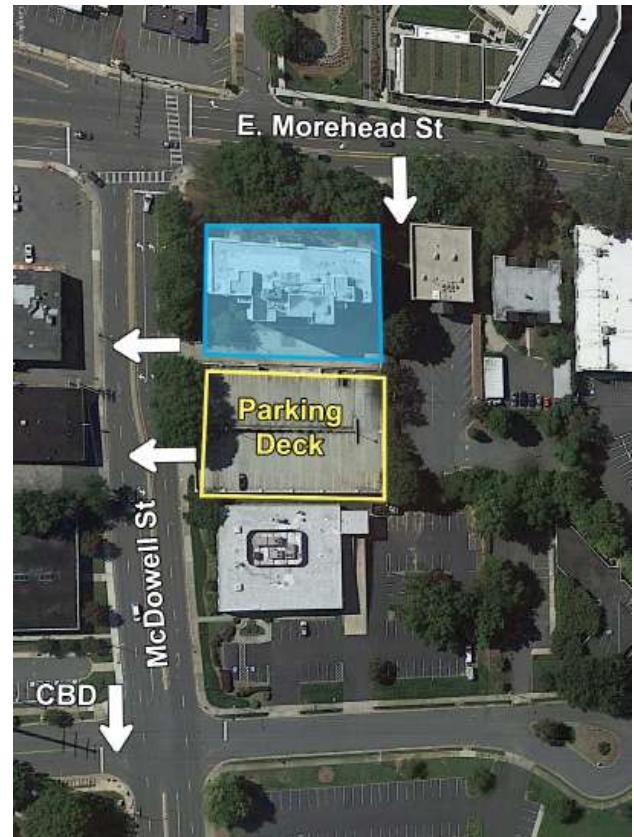




## 2,412 SF

### FEATURES:

- Nine-story office building, ±68,000 SF
- Open, creative space with lots of windows & natural lighting
- Move-in ready
- Abundant parking with a covered deck at a 3 per 1,000 SF ratio
- Corner unit with views of Uptown Charlotte
- Excellent visibility at signalized intersection
- Registered as a local Historic Landmark
- Ideal location between Dilworth, Midtown and CBD, with easy access to I-77 & I-277
- Numerous amenities nearby including Dowd YMCA, the Metropolitan, restaurants/retail, The Little Sugar Creek Greenway and Atrium Health's Main Campus
- Beacon Partners leases and manages over 1 million SF in the Midtown and South End areas



### FOR MORE INFORMATION, CONTACT:

**KRISTY VENNING**  
704.926.1409 (d) 504.420.9351 (m)  
[kristy@beacondevelopment.com](mailto:kristy@beacondevelopment.com)

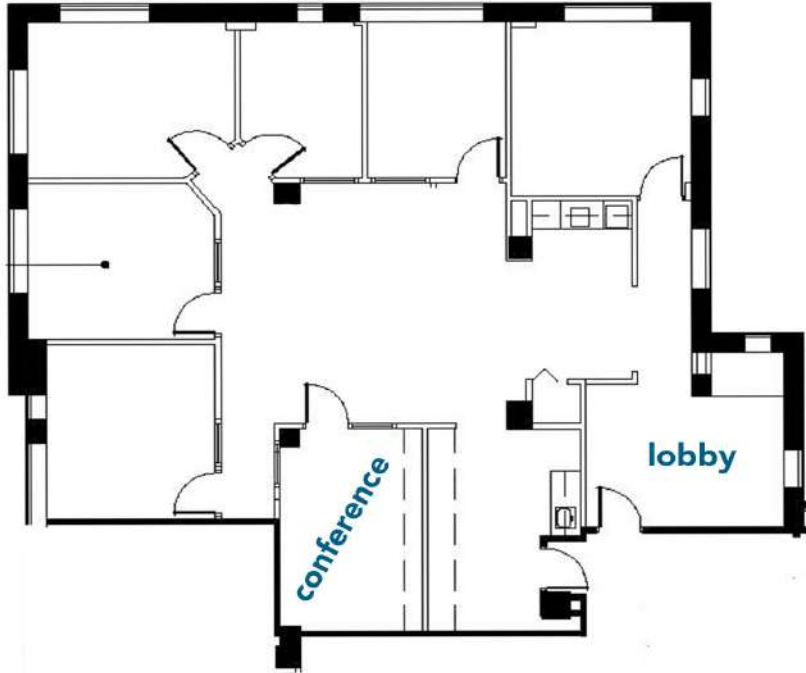
500 East Morehead Street | Suite 200 | Charlotte, NC 28202  
[www.beacondevelopment.com](http://www.beacondevelopment.com)

# THE ADDISON BUILDING

## ±2,412 SF AVAILABLE FOR LEASE

831 E. MOREHEAD ST., SUITE 460 | CHARLOTTE, NC 28202

FLOOR PLAN: SUITE 460



AERIAL:



FOR MORE INFORMATION, CONTACT:

**KRISTY VENNING**  
704.926.1409 (d) 504.420.9351 (m)  
[kristy@beacondevelopment.com](mailto:kristy@beacondevelopment.com)

500 East Morehead Street | Suite 200 | Charlotte, NC 28202  
[www.beacondevelopment.com](http://www.beacondevelopment.com)

