

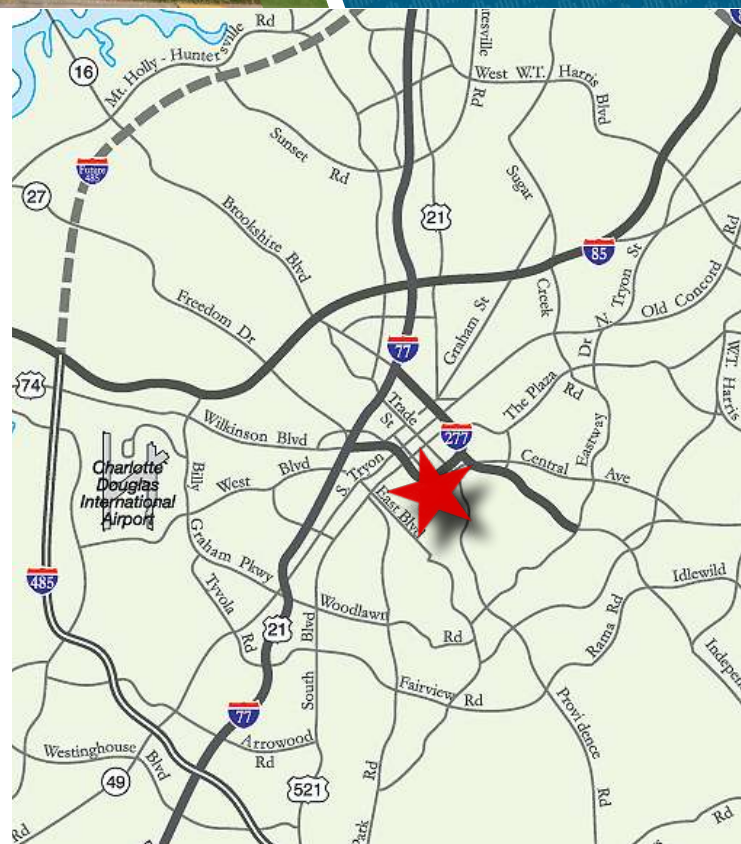


THE ADDISON

831 E MOREHEAD STREET
SUITE 150
CHARLOTTE, NC 28202

±5,646 SF OFFICE FOR LEASE

- Nine-story office building, ±76,701 SF
- Built in 1926 as Charlotte's first luxury condominium, converted to office and expanded in 1997. Registered as a local Historic Landmark
- Abundant parking with a covered deck at a 3 per 1,000 SF ratio
- Excellent visibility at a signalized intersection at the corner of S McDowell and East Morehead Street
- ±3,000 multifamily residential units planned in the immediate area
- Situated in the heart of Charlotte's Midtown market, adjacent to Uptown, the Atrium Pearl District Campus and access to I-277/I-77
- Walkable to Carson Light Rail and numerous Midtown and South End restaurants and amenities



FOR MORE INFORMATION, CONTACT:

CLAIRE SHEALY

704.926.1409 (d) | claire@beacondevelopment.com

www.beacondevelopment.com

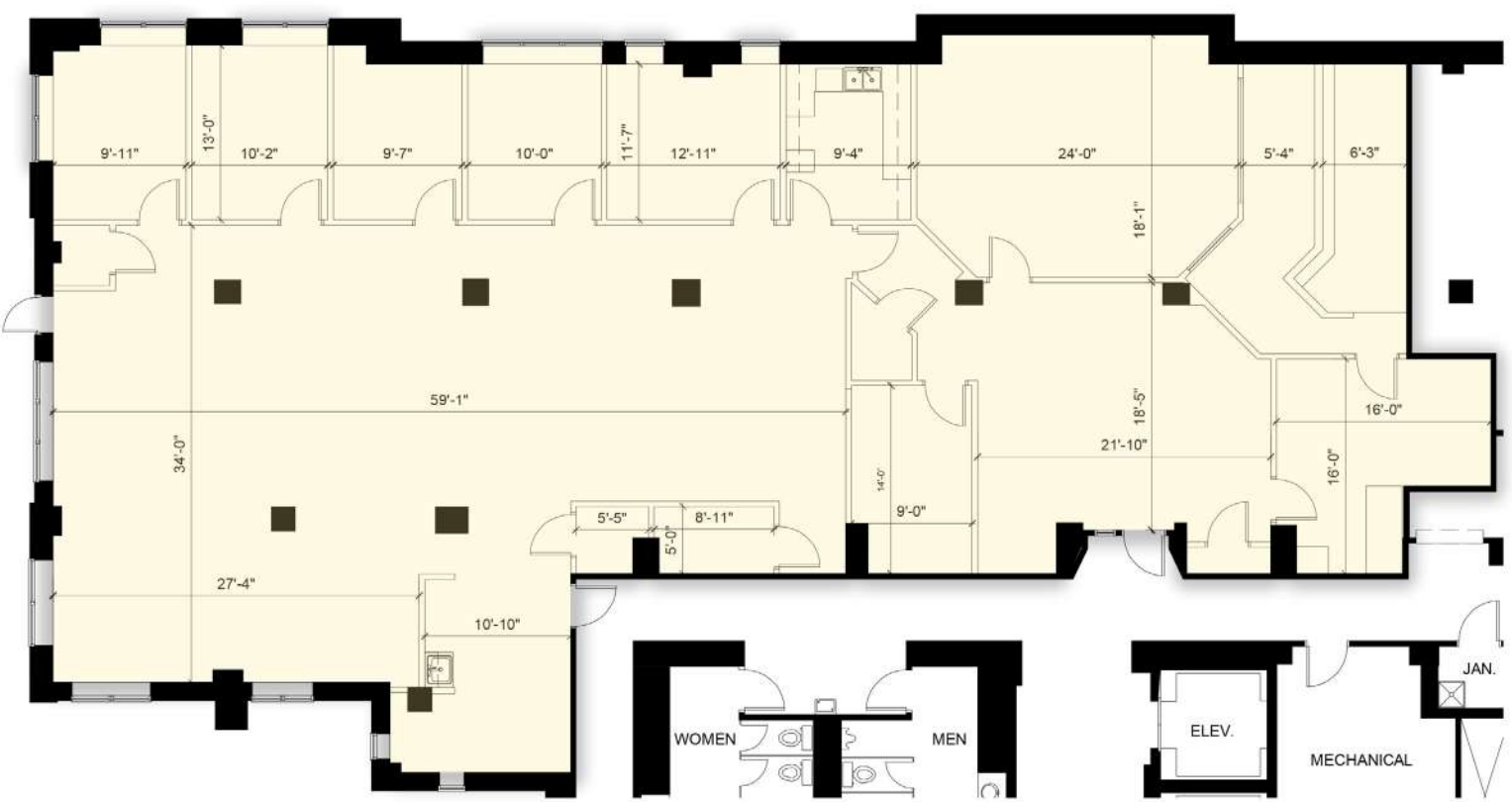


REAR ENTRANCE

THE ADDISON

831 E MOREHEAD STREET
SUITE 150
CHARLOTTE, NC 28202

SUITE 150: +5,646 SF



FOR MORE INFORMATION, CONTACT:

CLAIRE SHEALY

704.926.1409 (d) | claire@beacondevelopment.com

www.beacondevelopment.com

All information regarding the property was obtained from sources deemed reliable but no warranty or representation is made of the accuracy thereof, and the property is subject to prior sale, lease or withdrawal.

SURROUNDING AMENITIES



THE ADDISON

831 E MOREHEAD STREET
SUITE 150
CHARLOTTE, NC 28202

Beacon Partners is a commercial real estate firm specializing in the development, acquisition, and operation of industrial, office and mixed-use properties. Beacon leases, owns or manages more than 14.5+ million square feet of space throughout the Carolinas.



Investing in the future of our community

FOR MORE INFORMATION, CONTACT:

CLAIRE SHEALY

704.926.1409 (d) | claire@beacondevelopment.com

www.beacondevelopment.com