

# THE ADDISON

831 E. MOREHEAD STREET, SUITE 460 | CHARLOTTE, NC 28202



OFFICE SPACE IN MIDTOWN AVAILABLE FOR LEASE

## 2,412 SF

- Nine-story office building, ±68,000 SF
- Open, creative space with lots of windows & natural lighting
- Move-in ready
- Abundant parking with a covered deck at a 3 per 1,000 SF ratio
- Excellent visibility at signalized intersection
- Registered as a local Historic Landmark
- Ideal location between Dilworth, Midtown and CBD, with easy access to I-77 & I-277
- Numerous amenities nearby including Dowd YMCA, the Metropolitan, restaurants/retail, The Little Sugar Creek Greenway and Atrium Health's Main Campus
- Beacon Partners leases and manages over 1 million SF in the Midtown and South End areas



FOR MORE INFORMATION, CONTACT:

**KRISTY VENNING**  
704.926.1409 (d)  
[kristy@beacondevelopment.com](mailto:kristy@beacondevelopment.com)

500 East Morehead Street | Suite 200 | Charlotte, NC 28202  
[www.beacondevelopment.com](http://www.beacondevelopment.com)

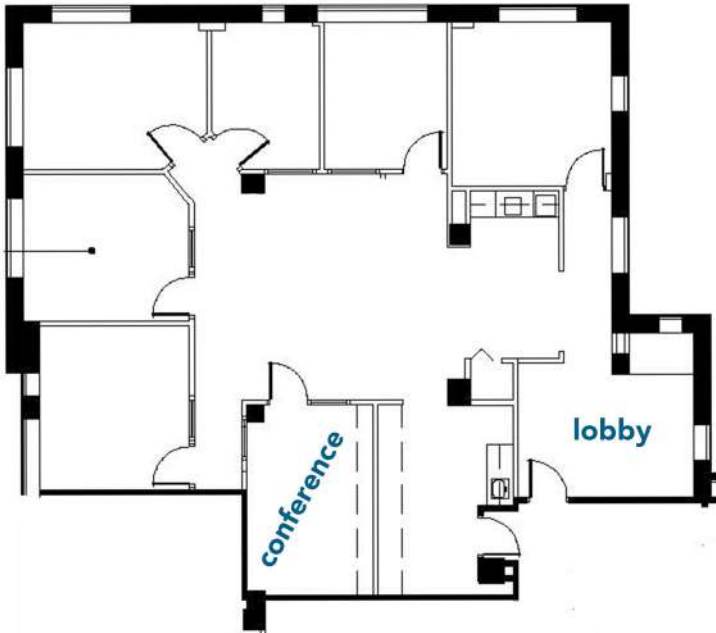




# THE ADDISON

831 E. MOREHEAD STREET, SUITE 460 | CHARLOTTE, NC 28202

FLOOR PLAN: SUITE 460



AERIAL:



FOR MORE INFORMATION, CONTACT:

**KRISTY VENNING**  
704.926.1409 (d)  
[kristy@beacondevelopment.com](mailto:kristy@beacondevelopment.com)

500 East Morehead Street | Suite 200 | Charlotte, NC 28202  
[www.beacondevelopment.com](http://www.beacondevelopment.com)



All information regarding the property was obtained from sources deemed reliable but no warranty or representation is made of the accuracy thereof, and the property is subject to prior sale, lease or withdrawal.