

THE ADDISON

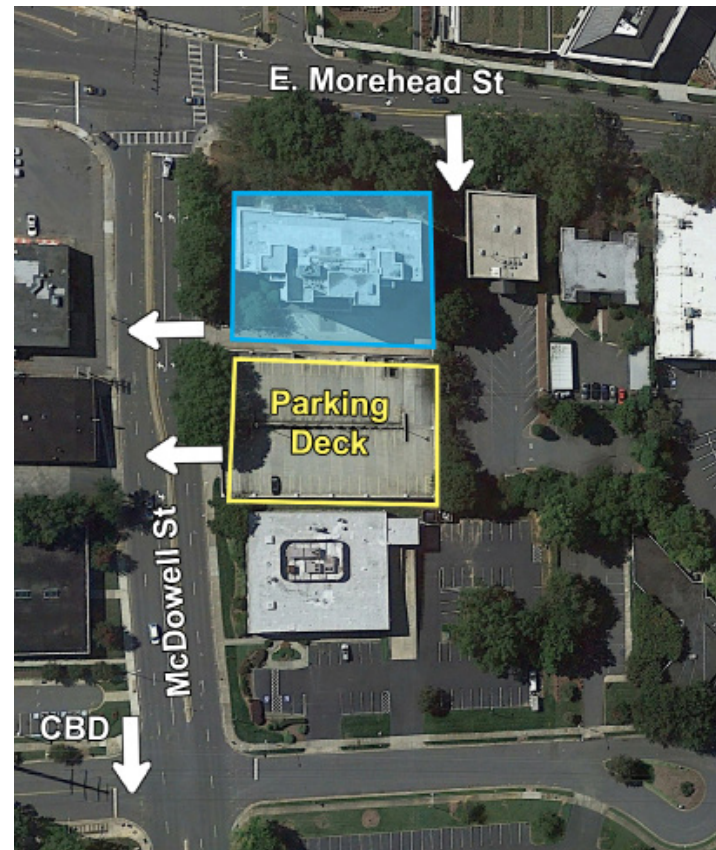
831 E. MOREHEAD STREET, SUITE 460 | CHARLOTTE, NC 28202



OFFICE SPACE IN MIDTOWN AVAILABLE FOR LEASE

2,580 SF

- Nine-story office building, ±68,000 SF
- Open, creative space with lots of windows & natural lighting
- Move-in ready
- Abundant parking with a covered deck at a 3 per 1,000 SF ratio
- Available 5/1/2020
- Excellent visibility at signalized intersection
- Registered as a local Historic Landmark
- Ideal location between Dilworth, Midtown and CBD, with easy access to I-77 & I-277
- Numerous amenities nearby including Dowd YMCA, the Metropolitan, restaurants/retail, The Little Sugar Creek Greenway and Atrium Health's Main Campus
- Beacon Partners leases and manages over 1 million SF in the Midtown and South End areas



FOR MORE INFORMATION, CONTACT:

ERIN SHAW
704.926.1414

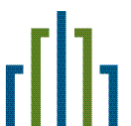
erin@beacondevelopment.com

500 East Morehead Street | Suite 200 | Charlotte, NC 28202
www.beacondevelopment.com

KRISTY VENNING
704.926.1409

kristy@beacondevelopment.com

500 East Morehead Street | Suite 200 | Charlotte, NC 28202
www.beacondevelopment.com



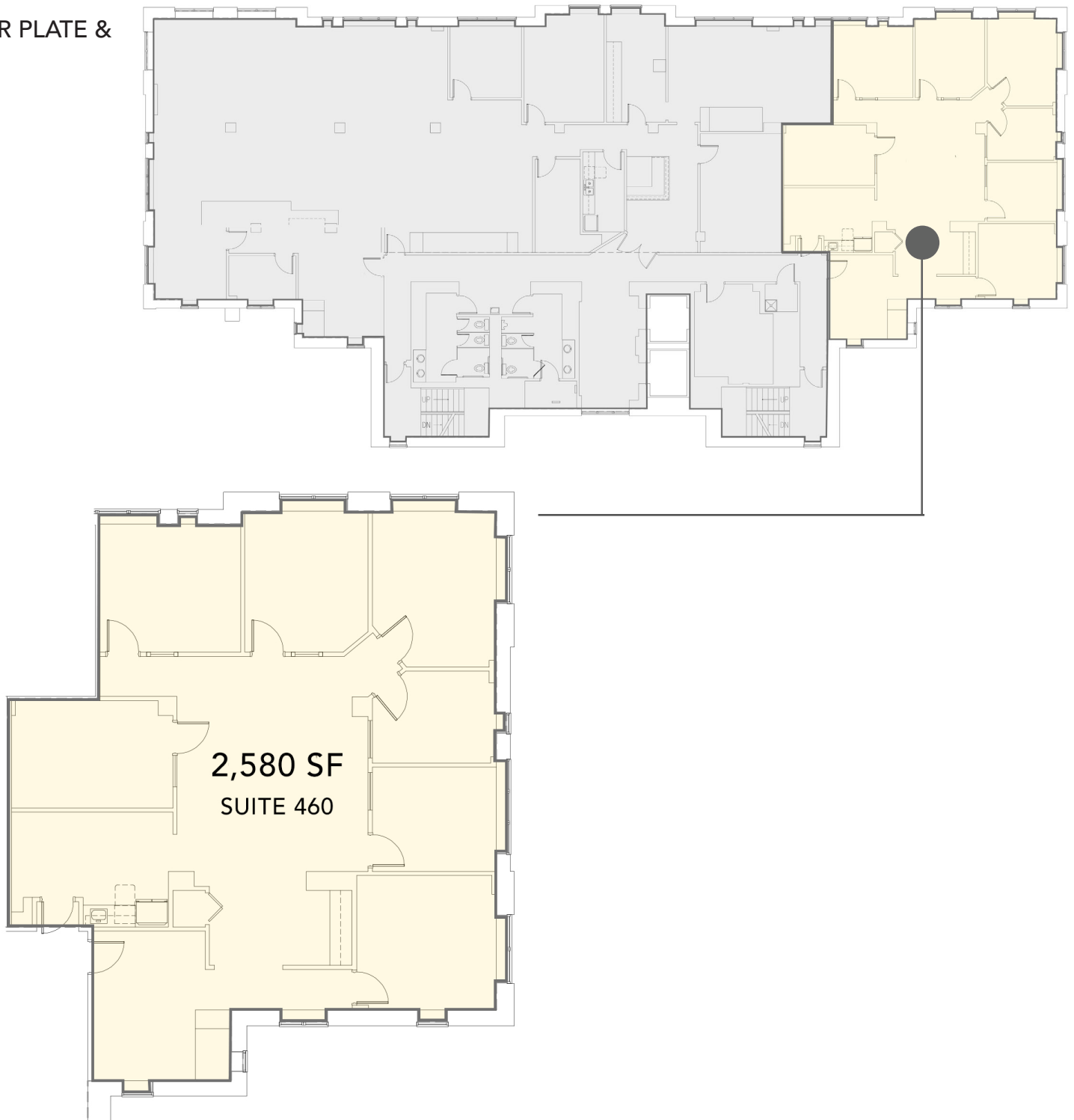
**BEACON
PARTNERS**

All information regarding the property was obtained from sources deemed reliable but no warranty or representation is made of the accuracy thereof, and the property is subject to prior sale, lease or withdrawal.

THE ADDISON

831 E. MOREHEAD STREET, SUITE 460 | CHARLOTTE, NC 28202

FLOOR PLATE & PLAN:



FOR MORE INFORMATION, CONTACT:

ERIN SHAW
704.926.1414

erin@beacondevelopment.com

500 East Morehead Street | Suite 200 | Charlotte, NC 28202

www.beacondevelopment.com

KRISTY VENNING
704.926.1409

kristy@beacondevelopment.com

500 East Morehead Street | Suite 200 | Charlotte, NC 28202

www.beacondevelopment.com

