

THE ADDISON

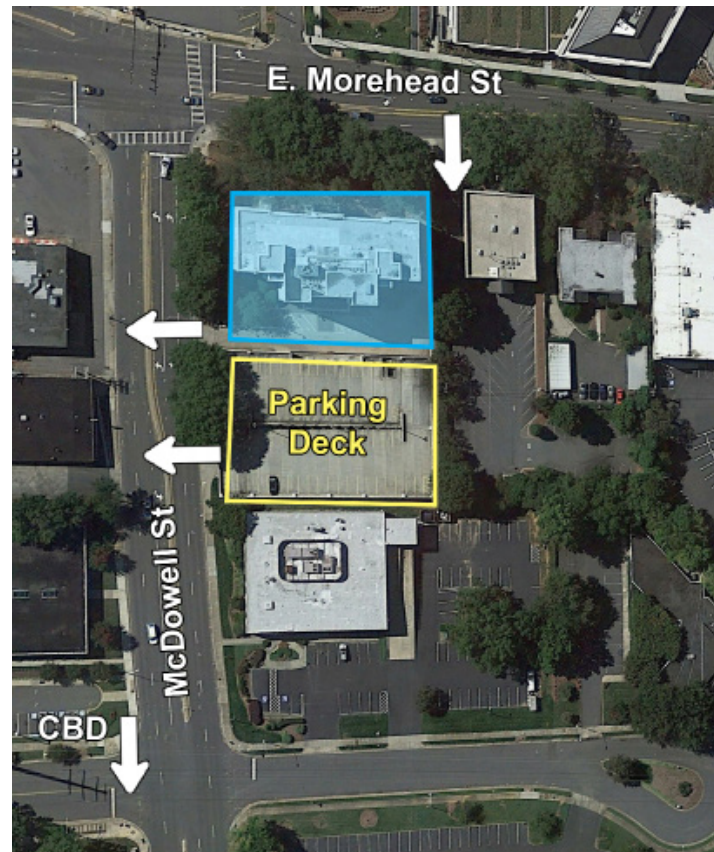
831 E. MOREHEAD STREET, SUITE 460 | CHARLOTTE, NC 28202



OFFICE SPACE IN MIDTOWN AVAILABLE FOR LEASE

2,580 SF

- Nine-story office building, ±68,000 SF
- Open, creative space with lots of windows & natural lighting
- Move-in ready
- Abundant parking with a covered deck at a 3 per 1,000 SF ratio
- Available 5/1/2020
- Excellent visibility at signalized intersection
- Registered as a local Historic Landmark
- Ideal location between Dilworth, Midtown and CBD, with easy access to I-77 & I-277
- Numerous amenities nearby including Dowd YMCA, the Metropolitan, restaurants/retail, The Little Sugar Creek Greenway and Atrium Health's Main Campus
- Beacon Partners leases and manages over 1 million SF in the Midtown and South End areas



FOR MORE INFORMATION, CONTACT:

ERIN SHAW
704.926.1414

erin@beacondevelopment.com

500 East Morehead Street | Suite 200 | Charlotte, NC 28202
www.beacondevelopment.com

KRISTY VENNING
704.926.1409

kristy@beacondevelopment.com

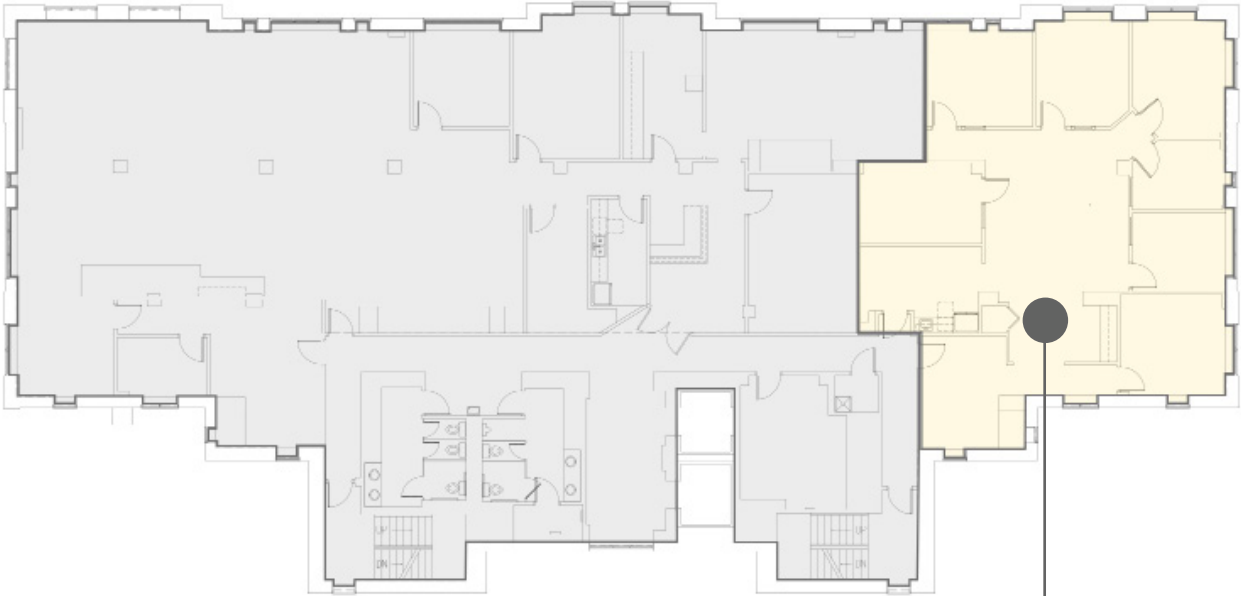
500 East Morehead Street | Suite 200 | Charlotte, NC 28202
www.beacondevelopment.com



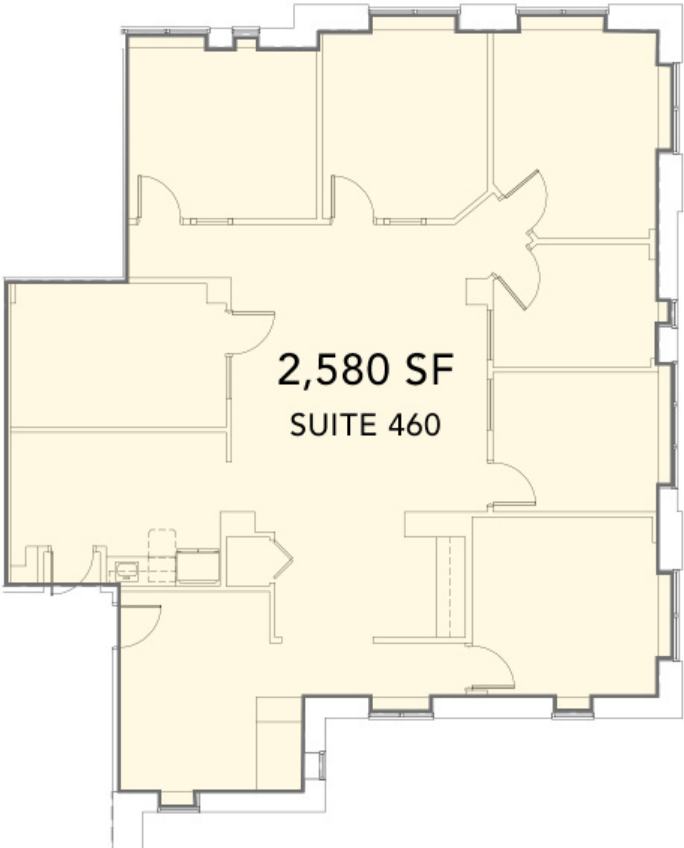
THE ADDISON

831 E. MOREHEAD STREET, SUITE 460 | CHARLOTTE, NC 28202

FLOOR PLATE &
PLAN:



[TAKE A TOUR OF THE SPACE](#)



2,580 SF
SUITE 460

FOR MORE INFORMATION, CONTACT:

ERIN SHAW
704.926.1414
erin@beacondevelopment.com

500 East Morehead Street | Suite 200 | Charlotte, NC 28202
www.beacondevelopment.com

KRISTY VENNING
704.926.1409
kristy@beacondevelopment.com

500 East Morehead Street | Suite 200 | Charlotte, NC 28202
www.beacondevelopment.com



**BEACON
PARTNERS**