



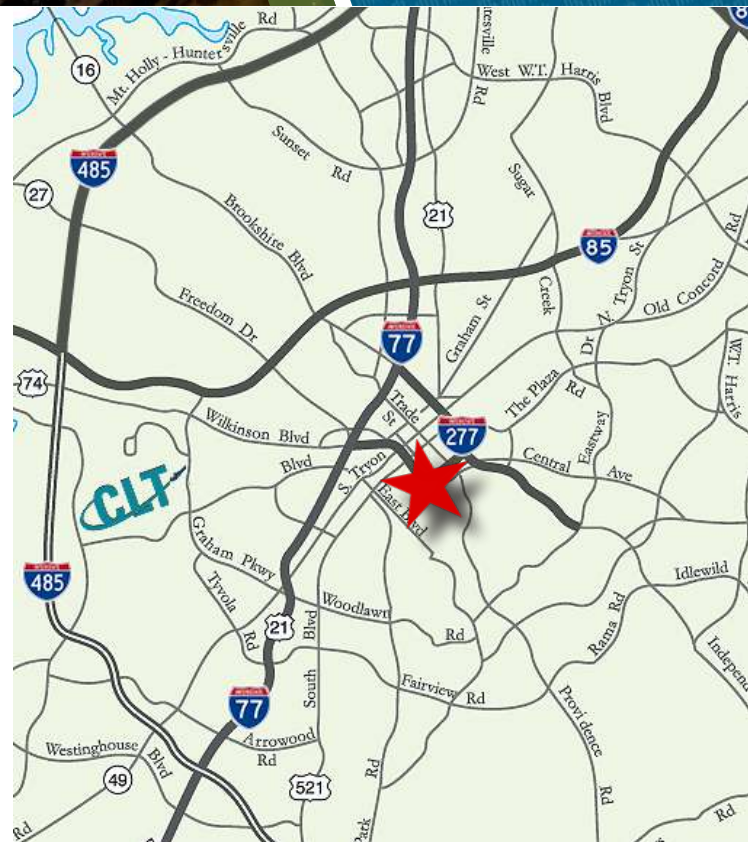
BEACON
PARTNERS

THE ADDISON

831 E MOREHEAD STREET
SUITE 540
CHARLOTTE, NC 28202

±5,653 SF MOVE-IN READY OFFICE

- Nine-story office building, ±76,701 SF
- Built in 1926 as Charlotte's first luxury condominium, converted to office and expanded in 1997. Registered as a local Historic Landmark
- Suite furniture included with 10 private offices, conference rooms and collaborative work spaces
- Abundant parking with a covered deck at a 3 per 1,000 SF ratio
- Excellent visibility at a signalized intersection at the corner of S McDowell and East Morehead Street
- ±3,000 multifamily residential units planned in the immediate area
- Situated in the heart of Charlotte's Midtown market, adjacent to Uptown, the Atrium Pearl District Campus and access to I-277/I-77
- Walkable to Carson Light Rail Station and numerous Midtown and South End restaurants and amenities



Investing in the future of our community

FOR MORE INFORMATION, CONTACT:

CLAIRE SHEALY

704.926.1409 (d) | claire@beacondevelopment.com

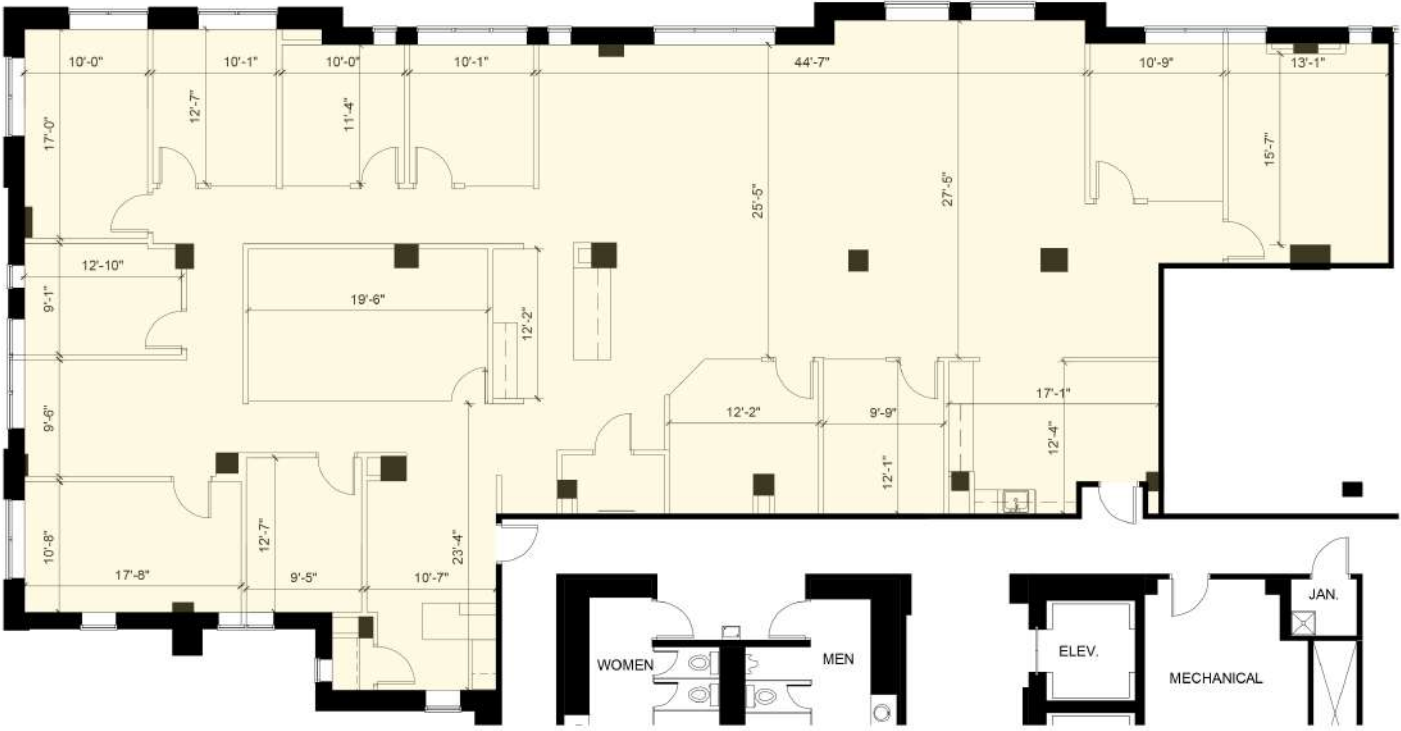
www.beacondevelopment.com



THE ADDISON

831 E MOREHEAD STREET
SUITE 540
CHARLOTTE, NC 28202

+5,653 SF MOVE-IN READY OFFICE



FOR MORE INFORMATION, CONTACT:

CLAIRE SHEALY

704.926.1409 (d) | claire@beacondevelopment.com

www.beacondevelopment.com

All information regarding the property was obtained from sources deemed reliable but no warranty or representation is made of the accuracy thereof, and the property is subject to prior sale, lease or withdrawal.

SURROUNDING AMENITIES

THE ADDISON

831 E MOREHEAD STREET
SUITE 540
CHARLOTTE, NC 28202



Beacon Partners is a commercial real estate firm specializing in the development, acquisition, and operation of industrial, office and mixed-use properties. Beacon leases, owns or manages more than 14.5+ million square feet of space throughout the Carolinas.



Investing in the future of our community

FOR MORE INFORMATION, CONTACT:

CLAIRE SHEALY

704.926.1409 (d) | claire@beacondevelopment.com

www.beacondevelopment.com