

THE ADDISON

831 E. MOREHEAD STREET, SUITE 740 & 840 | CHARLOTTE, NC 28202



OFFICE SPACE IN MIDTOWN AVAILABLE FOR LEASE

±4,021- 4,224 SF

- Nine-story office building, ±68,000 SF
- An upper floor, corner suite with Uptown views
- Built in 1926 as Charlotte's first luxury condominium; Converted to office and expanded in 1997
- Abundant parking with a covered deck at a 3 per 1,000 SF ratio
- Excellent visibility at signalized intersection
- Registered as a local Historic Landmark
- Ideal location between Dilworth, Midtown and CBD, with easy access to I-77 & I-277
- Numerous amenities nearby including Dowd YMCA, the Metropolitan, restaurants/retail, Art's BBQ and Deli, The Little Sugar Creek Greenway and Atrium Health's Main Campus
- Beacon Partners leases and manages over 1 million SF in the Midtown and South End areas



FOR MORE INFORMATION, CONTACT:

ERIN SHAW

704.926.1414 | erin@beacondevelopment.com

500 East Morehead Street | Suite 200 | Charlotte, NC 28202

www.beacondevelopment.com

KRISTY VENNING

704.926.1409 | kristy@beacondevelopment.com

500 East Morehead Street | Suite 200 | Charlotte, NC 28202

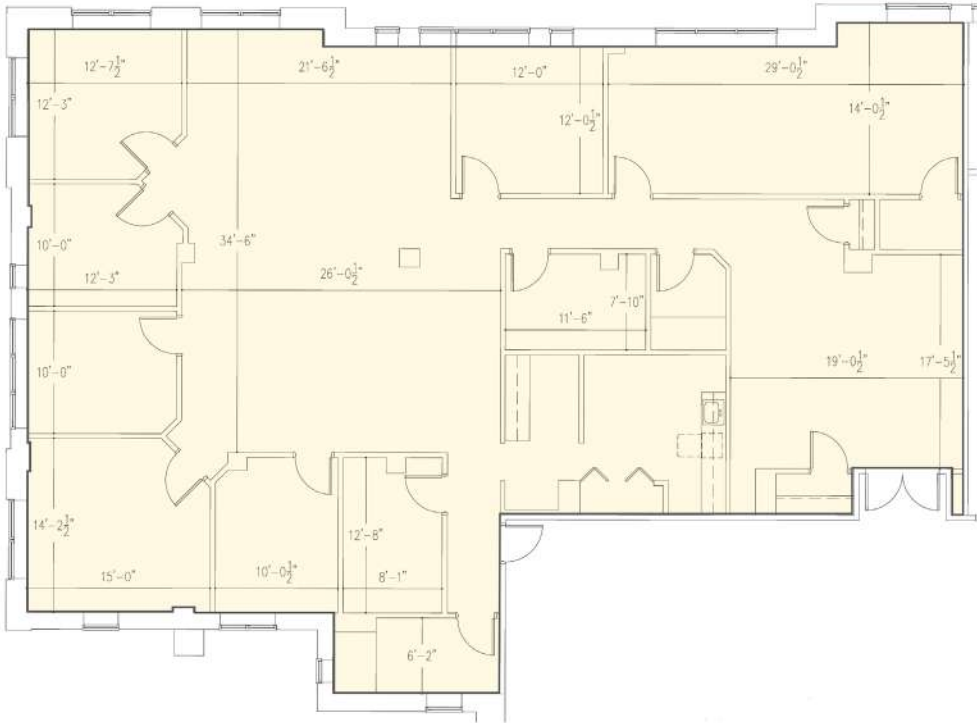
www.beacondevelopment.com



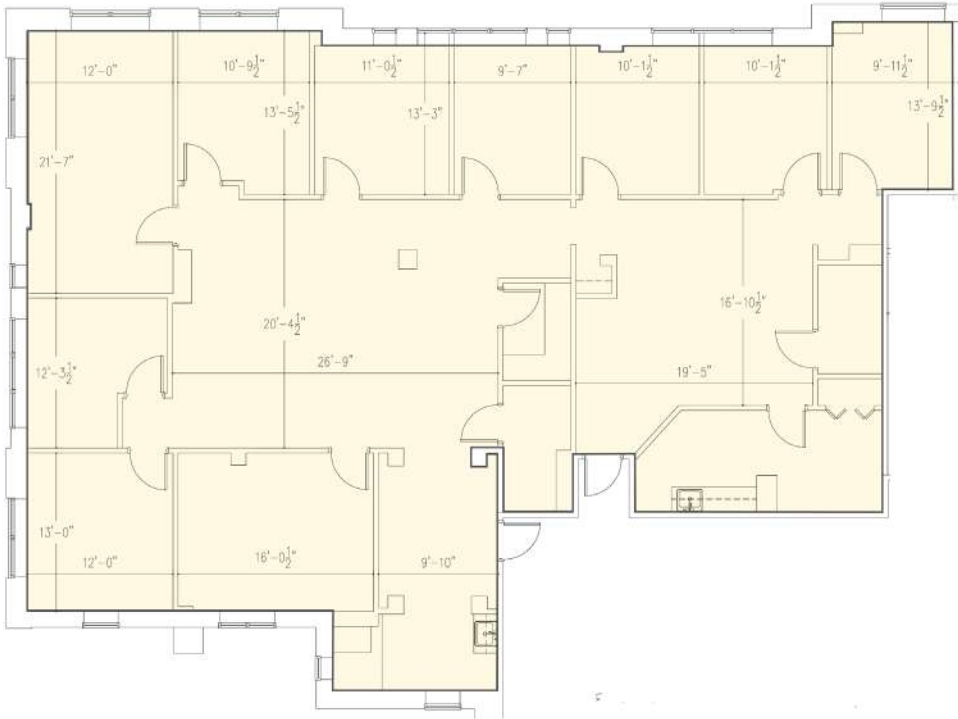
THE ADDISON

831 E. MOREHEAD STREET, SUITE 740 & 840 | CHARLOTTE, NC 28202

SUITE 740: +/-4,224 SF



SUITE 840: +/-4,021 SF



FOR MORE INFORMATION, CONTACT:

ERIN SHAW
704.926.1414 | erin@beacondevelopment.com
500 East Morehead Street | Suite 200 | Charlotte, NC 28202
www.beacondevelopment.com

KRISTY VENNING
704.926.1409 | kristy@beacondevelopment.com
500 East Morehead Street | Suite 200 | Charlotte, NC 28202
www.beacondevelopment.com



All information regarding the property was obtained from sources deemed reliable but no warranty or representation is made of the accuracy thereof, and the property is subject to prior sale, lease or withdrawal.