

# THE ADDISON

831 E. MOREHEAD STREET, SUITE 860 | CHARLOTTE, NC 28202



OFFICE SPACE IN MIDTOWN AVAILABLE FOR LEASE

**±4,404 SF**

- Nine-story office building, ±68,000 SF
- An upper floor suite on a corner with Uptown views
- Built in 1926 as Charlotte's first luxury condominium; Converted to office and expanded in 1997
- Abundant parking with a covered deck at a 3 per 1,000 SF ratio
- Excellent visibility at signalized intersection
- Registered as a local Historic Landmark
- Ideal location between Dilworth, Midtown and CBD, with easy access to I-77 & I-277
- Numerous amenities nearby including Dowd YMCA, the Metropolitan, restaurants/retail, Art's BBQ and Deli, The Little Sugar Creek Greenway and Atrium Health's Main Campus
- Beacon Partners leases and manages over 1 million SF in the Midtown and South End areas



FOR MORE INFORMATION, CONTACT:

**KRISTY VENNING**  
704.926.1409 (d)  
[kristy@beacondevelopment.com](mailto:kristy@beacondevelopment.com)

500 East Morehead Street | Suite 200 | Charlotte, NC 28202  
[www.beacondevelopment.com](http://www.beacondevelopment.com)

**ERIN SHAW**  
704.926.1414 (d)  
[erin@beacondevelopment.com](mailto:erin@beacondevelopment.com)

500 East Morehead Street | Suite 200 | Charlotte, NC 28202  
[www.beacondevelopment.com](http://www.beacondevelopment.com)



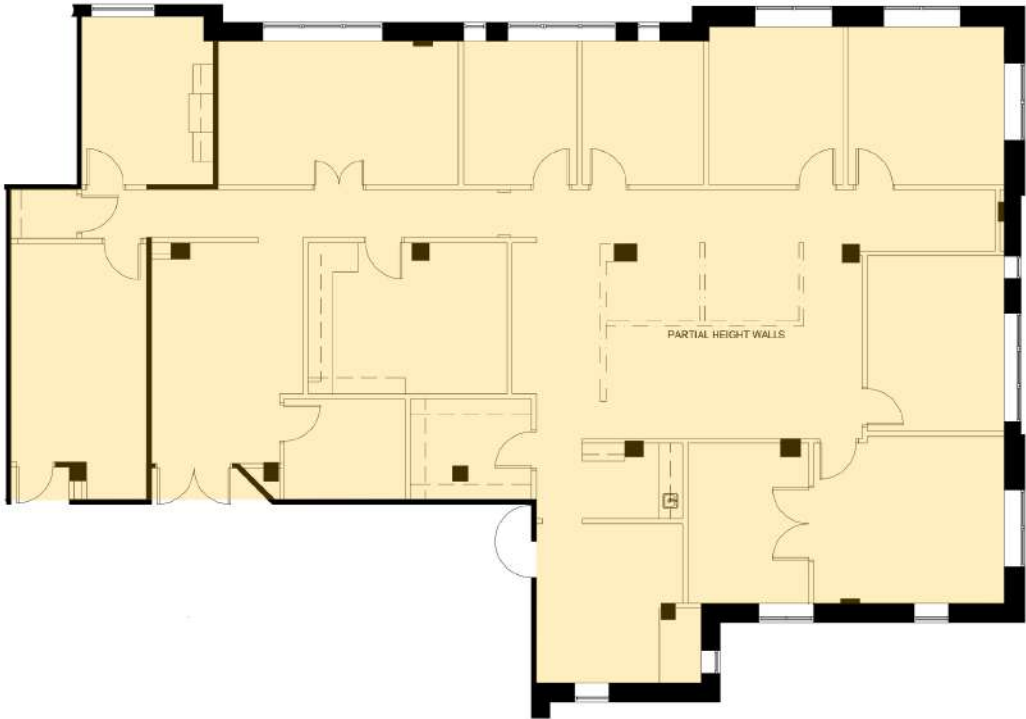
# THE ADDISON

831 E. MOREHEAD STREET, SUITE 860 | CHARLOTTE, NC 28202

## FLOOR PLATE:



FLOOR PLAN: +/-4,404 SF



### FOR MORE INFORMATION, CONTACT:

**KRISTY VENNING**  
704.926.1409 (d)  
[kristy@beacondevelopment.com](mailto:kristy@beacondevelopment.com)

500 East Morehead Street | Suite 200 | Charlotte, NC 28202  
[www.beacondevelopment.com](http://www.beacondevelopment.com)

**ERIN SHAW**  
704.926.1414 (d)  
[erin@beacondevelopment.com](mailto:erin@beacondevelopment.com)

500 East Morehead Street | Suite 200 | Charlotte, NC 28202  
[www.beacondevelopment.com](http://www.beacondevelopment.com)

