

THE ADDISON

831 E. MOREHEAD STREET, SUITE 740 & SUITE 750 | CHARLOTTE, NC 28202



OFFICE SPACE IN MIDTOWN AVAILABLE FOR LEASE

±900 - 5,249 SF

- 900 & 4,394 SF spaces are combinable to 5,249 SF
- Nine-story office building, ±68,000 SF
- Upper floor corner suite with views from 3 sides
- Built in 1926 as Charlotte's first luxury condominium; Converted to office and expanded in 1997; Registered as a local Historic Landmark
- Abundant parking with a covered deck at a 3 per 1,000 SF ratio
- Excellent visibility at signalized intersection
- Registered as a local Historic Landmark
- Ideal location between Dilworth, Midtown and CBD, with easy access to I-77 & I-277
- Numerous amenities nearby including Dowd YMCA, the Metropolitan, restaurants/retail, The Little Sugar Creek Greenway and Atrium Health's Main Campus



FOR MORE INFORMATION, CONTACT:

ERIN SHAW

704.926.1414 | erin@beacondevelopment.com

500 East Morehead Street | Suite 200 | Charlotte, NC 28202

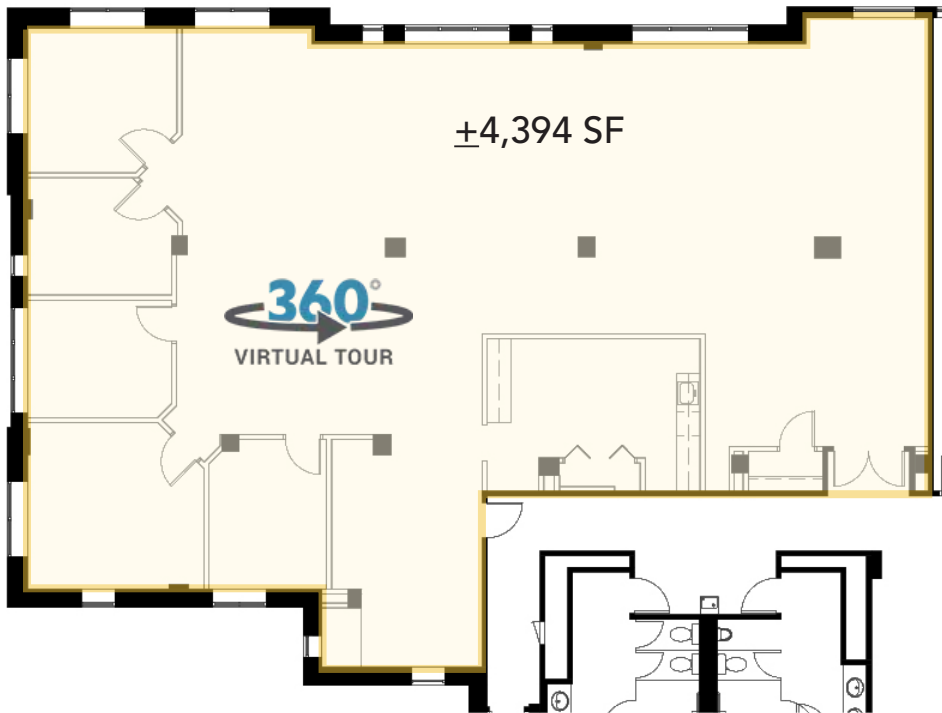
www.beacondevelopment.com



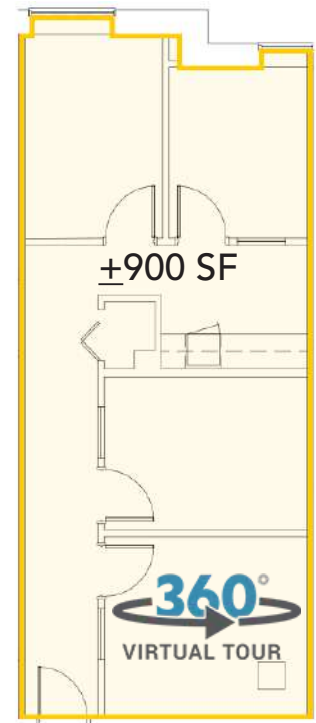
THE ADDISON

831 E. MOREHEAD STREET, SUITE 740 & SUITE 750 | CHARLOTTE, NC 28202

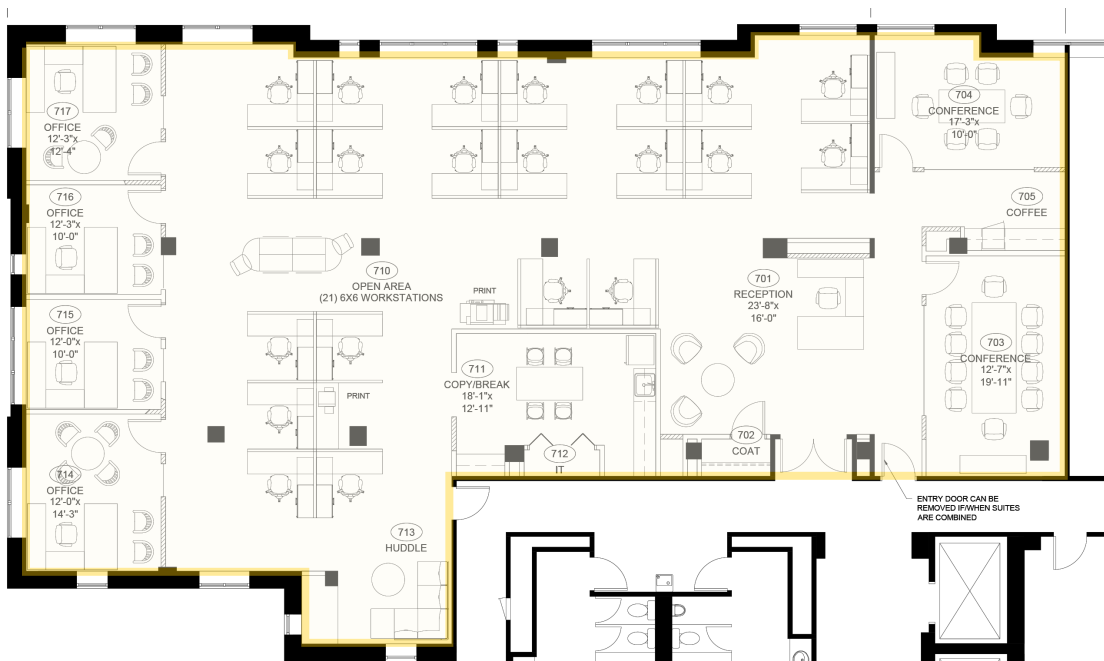
SUITE 740:



SUITE 750:



SUITE 740 & 750: $\pm 5,249$ SF



FOR MORE INFORMATION, CONTACT:

ERIN SHAW

704.926.1414 | erin@beacondevelopment.com

500 East Morehead Street | Suite 200 | Charlotte, NC 28202

www.beacondevelopment.com



THE ADDISON

831 E. MOREHEAD STREET, SUITE 740 & SUITE 750 | CHARLOTTE, NC 28202



FOR MORE INFORMATION, CONTACT:

ERIN SHAW
704.926.1414 | erin@beacondevelopment.com
500 East Morehead Street | Suite 200 | Charlotte, NC 28202
www.beacondevelopment.com



All information regarding the property was obtained from sources deemed reliable but no warranty or representation is made of the accuracy thereof, and the property is subject to prior sale, lease or withdrawal.