

# BOXER BUILDING

+/-2,942 SF OFFICE SPACE AVAILABLE

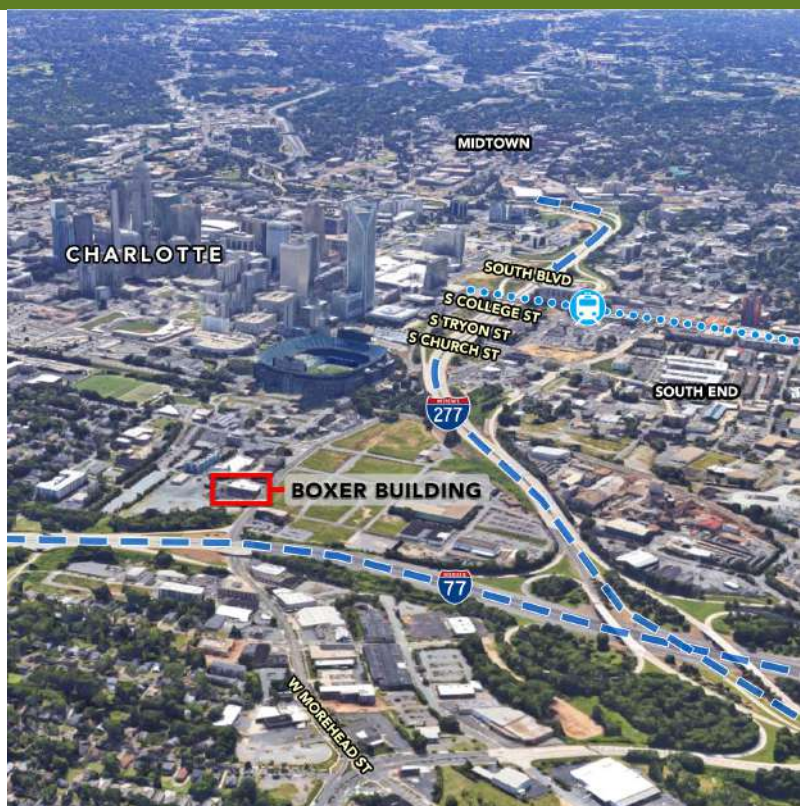
1000 W. MOREHEAD ST | SUITE 100 | CHARLOTTE, NC 28208



2,942 SF - Suite 100

## FEATURES:

- Space is creative; exposed ceilings, large windows
- The Boxer Building is listed in the National Register Historic Places: built in 1927
- Lobby was recently renovated in 2017
- Free on-site parking
- Highly visible with immediate access to I-77, I-277 and Charlotte Business District
- Within walking distance to Bank of America Stadium
- Beacon leases and manages over 1 million SF in the Midtown and South End area



FOR MORE INFORMATION, CONTACT:

**KRISTY VENNING**  
704.926.1409 (d)  
[kristy@beacondevelopment.com](mailto:kristy@beacondevelopment.com)

500 East Morehead Street | Suite 200 | Charlotte, NC 28202  
[www.beacondevelopment.com](http://www.beacondevelopment.com)

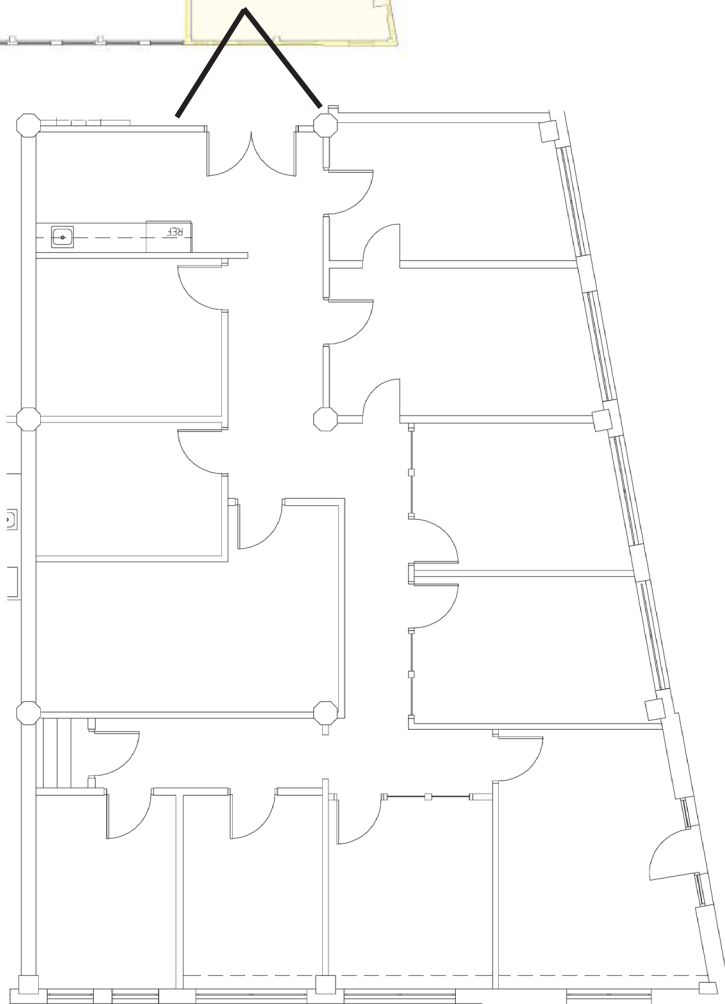
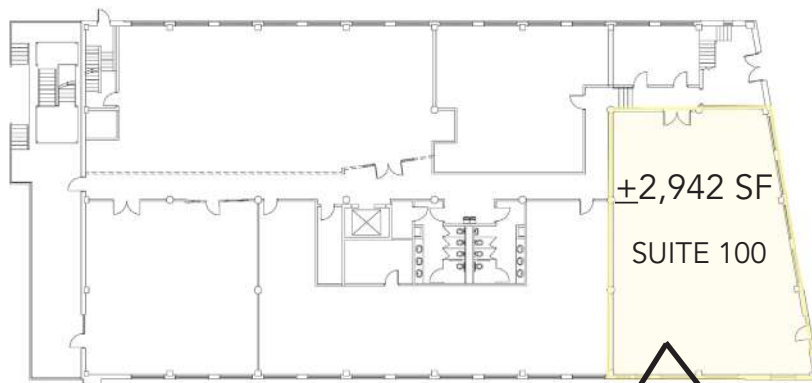


# BOXER BUILDING

+/-2,942 SF OFFICE SPACE AVAILABLE

1000 W. MOREHEAD ST | SUITE 100 | CHARLOTTE, NC 28208

## FLOOR PLATE & PLAN:



FOR MORE INFORMATION, CONTACT:

**KRISTY VENNING**  
704.926.1409 (d)  
[kristy@beacondevelopment.com](mailto:kristy@beacondevelopment.com)

500 East Morehead Street | Suite 200 | Charlotte, NC 28202  
[www.beacondevelopment.com](http://www.beacondevelopment.com)



**BEACON  
PARTNERS**