

# BOXER BUILDING

±2,819 SF OFFICE SPACE AVAILABLE

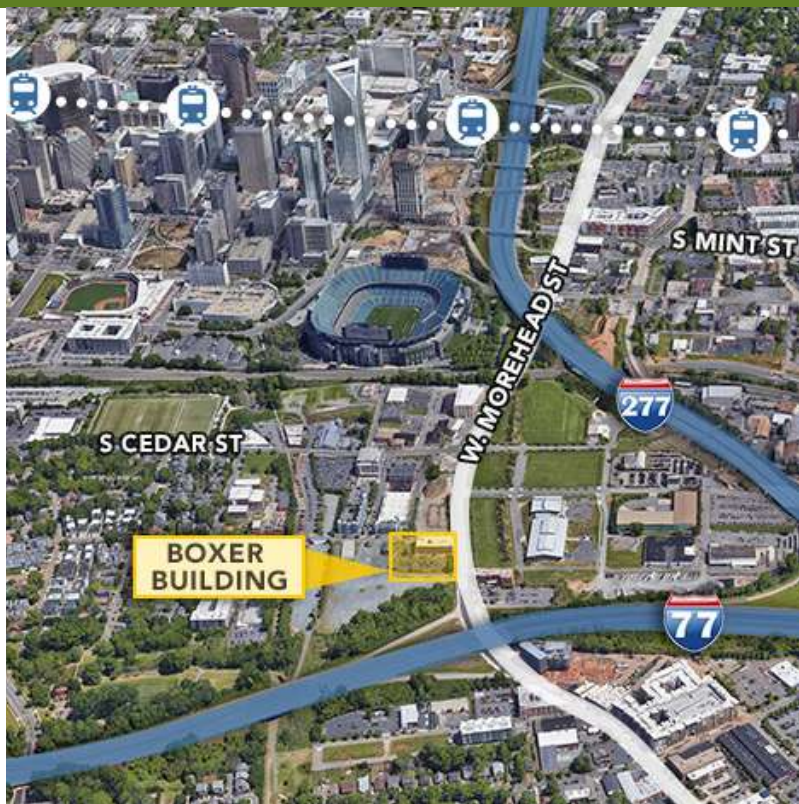
1000 W. MOREHEAD ST | SUITE 100 | CHARLOTTE, NC 28208



## NEWLY RENOVATED CREATIVE OFFICE

### FEATURES:

- 2,819 SF suite available
- Move in ready, creative, open office space
- The Boxer Building is listed in the National Register Historic Places, Built in 1927
- Free on-site parking
- Highly visible with immediate access to I-77, I-277, near Uptown, South End, and FreeMoreWest
- Within walking distance to Bank of America Stadium
- Beacon leases and manages over 1 million SF in Midtown and South End areas



FOR MORE INFORMATION, CONTACT:

**KRISTY VENNING**

704.926.1409 | [kristy@beacondevelopment.com](mailto:kristy@beacondevelopment.com)

500 East Morehead Street | Suite 200 | Charlotte, NC 28202

[www.beacondevelopment.com](http://www.beacondevelopment.com)

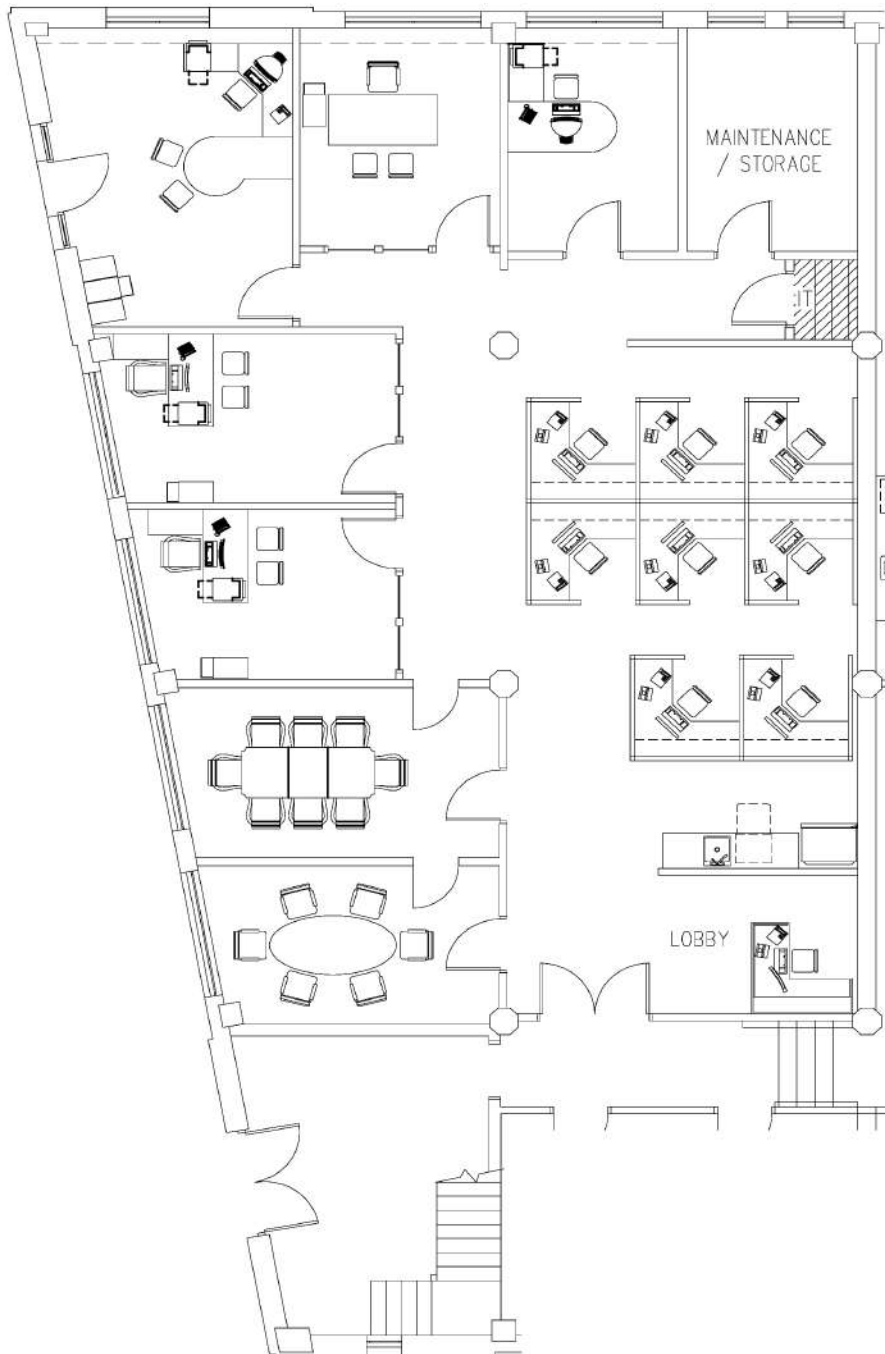


# BOXER BUILDING

±2,819 SF OFFICE SPACE AVAILABLE

1000 W. MOREHEAD ST | SUITE 100 | CHARLOTTE, NC 28208

## FLOOR PLAN:



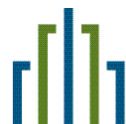
FOR MORE INFORMATION, CONTACT:

**KRISTY VENNING**

704.926.1409 | [kristy@beacondevelopment.com](mailto:kristy@beacondevelopment.com)

500 East Morehead Street | Suite 200 | Charlotte, NC 28202

[www.beacondevelopment.com](http://www.beacondevelopment.com)



**BEACON  
PARTNERS**