

BOXER BUILDING

SMALL OFFICE SUITE AVAILABLE

1000 W. MOREHEAD ST. | SUITE 110 | CHARLOTTE, NC 28208



FEATURES:

- 316 SF Available
- Open suite with tall exposed ceilings, floor to ceilings windows with views of Uptown
- The Boxer Building is listed in the National Register of Historic Places; built in 1927
- Lobby was recently renovated in 2017
- Free on-site parking
- Highly visible with immediate access to I-77, I-277 and Charlotte Business District
- Within walking distance to Bank of America Stadium
- Beacon Partners leases and manages over 1 million SF in Midtown and South End



FOR MORE INFORMATION, CONTACT:

KRISTY VENNING

704.926.1409 (d) kristy@beacondevelopment.com

500 East Morehead Street | Suite 200 | Charlotte, NC 28202

www.beacondevelopment.com

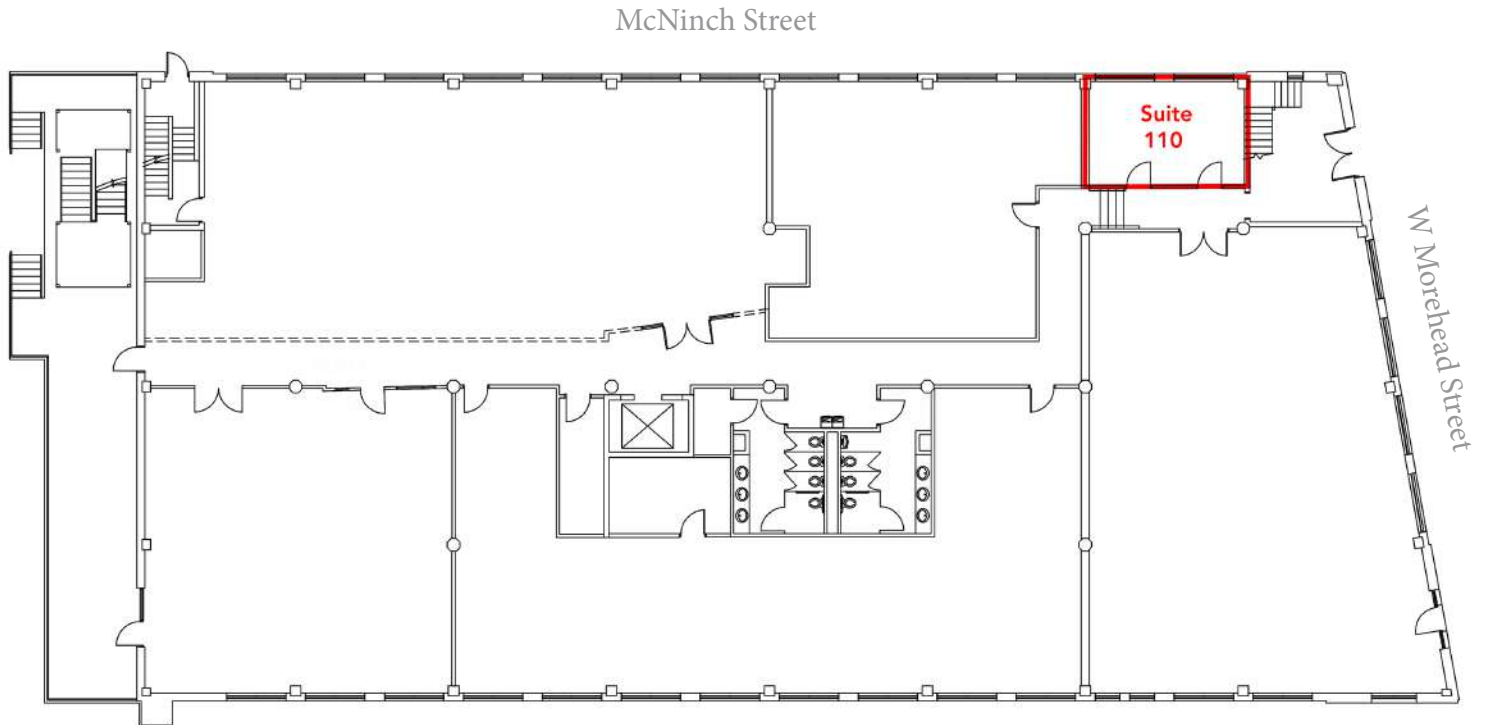


BOXER BUILDING

SMALL OFFICE SUITE AVAILABLE

1000 W. MOREHEAD ST. | SUITE 110 | CHARLOTTE, NC 28208

FLOOR PLATE:



FOR MORE INFORMATION, CONTACT:

KRISTY VENNING

704.926.1409 (d) kristy@beacondevelopment.com

500 East Morehead Street | Suite 200 | Charlotte, NC 28202

www.beacondevelopment.com

