

# CEDAR HILL

800 W. HILL STREET | FOURTH FLOOR | CHARLOTTE, NC 28208



## HISTORIC OFFICE SPACE AVAILABLE:

**±4,521 - 10,747 SF**

- Excellent views of Uptown Charlotte
- A premier five-story historic brick building; built in 1926
- Free surface parking: 3 per 1,000
- Located off of Morehead Street at the corner of Cedar and Hill Street directly next to Bank of America Stadium
- Free bike share program
- Lobby and interior/exterior signage renovated in 2017 to reflect the history of the building
- Immediate access to I-77, I-277 and Charlotte CBD
- Beacon Partners owns, leases and manages over 1 million SF in Midtown and South End



FOR MORE INFORMATION, CONTACT:

**KRISTY VENNING**

**704.926.1409**

[kristy@beacondevelopment.com](mailto:kristy@beacondevelopment.com)

500 East Morehead Street | Suite 200 | Charlotte, NC 28202

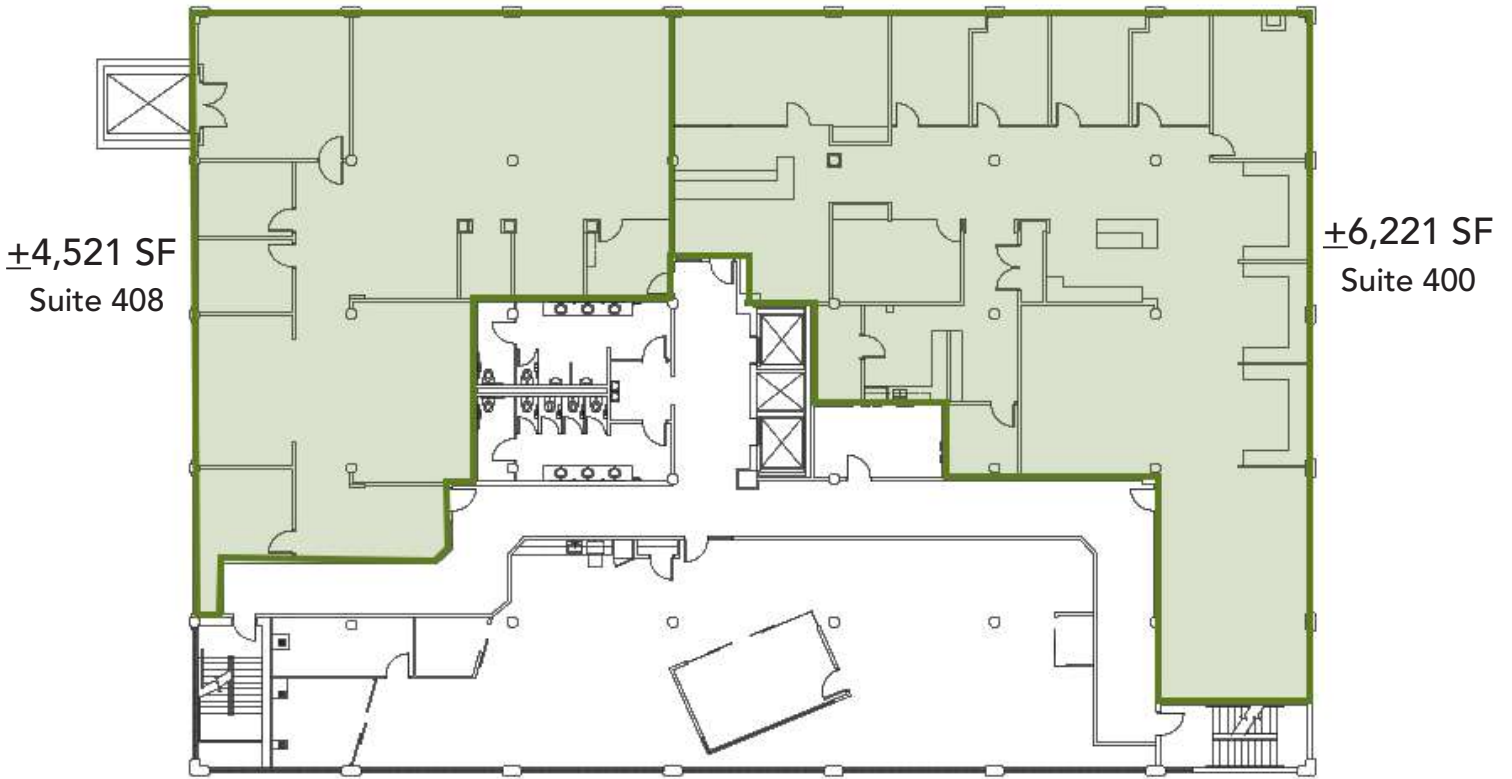
[www.beacondevelopment.com](http://www.beacondevelopment.com)



**BEACON  
PARTNERS**

# CEDAR HILL

FOURTH FLOOR SPACE AVAILABLE:  $\pm 10,747$  SF



FOR MORE INFORMATION, CONTACT:

**KRISTY VENNING**

**704.926.1409**

[kristy@beacondevelopment.com](mailto:kristy@beacondevelopment.com)

500 East Morehead Street | Suite 200 | Charlotte, NC 28202

[www.beacondevelopment.com](http://www.beacondevelopment.com)



**BEACON  
PARTNERS**