

CEDAR HILL

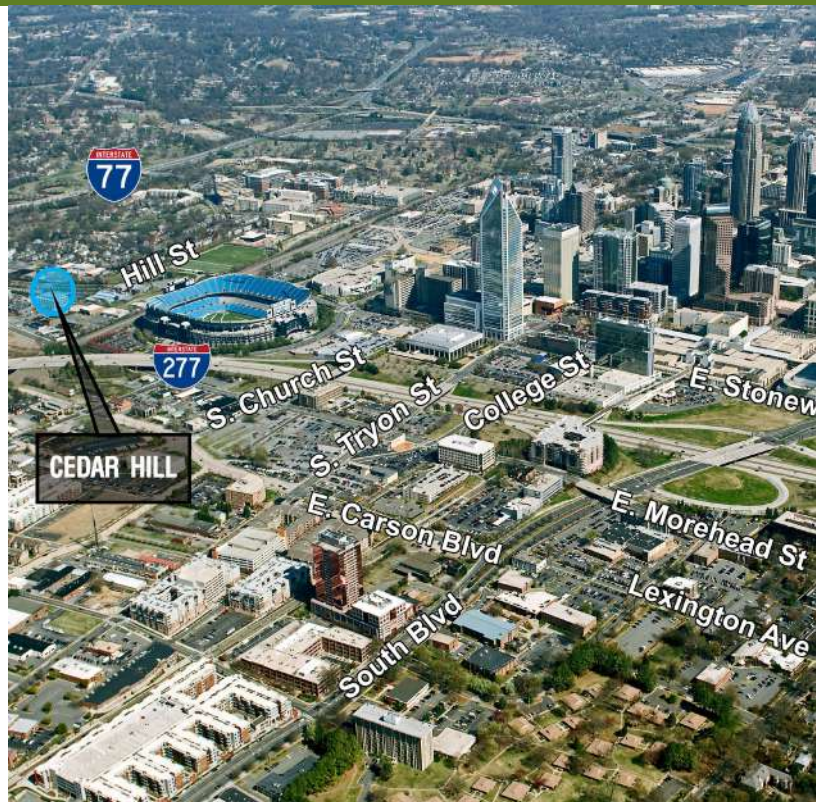
800 W. HILL STREET | SUITE 400 | CHARLOTTE, NC 28208



CREATIVE SPACE IN SOUTH END AVAILABLE

6,226 SF

- Excellent views of Uptown Charlotte
- A premier five-story historic brick building; built in 1926
- Free surface parking: 3 per 1,000
- Located off of Morehead Street at the corner of Cedar and Hill Street; directly next to Bank of America Stadium
- Free bike share program
- Available September 1, 2020
- Lobby and interior/exterior signage renovated in 2017 to reflect the history of the building
- Immediate access to I-77, I-277 and Charlotte CBD
- Beacon Partners owns, leases and manages over 1 million SF in Midtown and South End



FOR MORE INFORMATION, CONTACT:

KRISTY VENNING

704.926.1409

kristy@beacondevelopment.com

500 East Morehead Street | Suite 200 | Charlotte, NC 28202

www.beacondevelopment.com

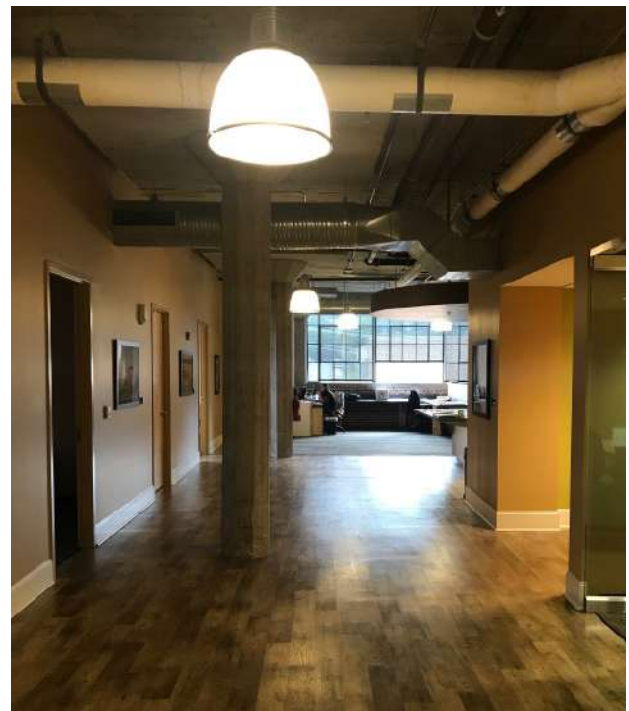
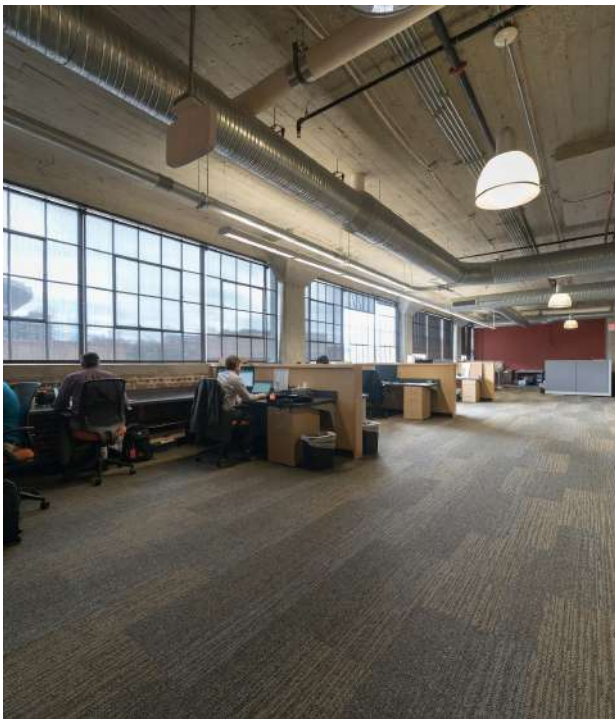
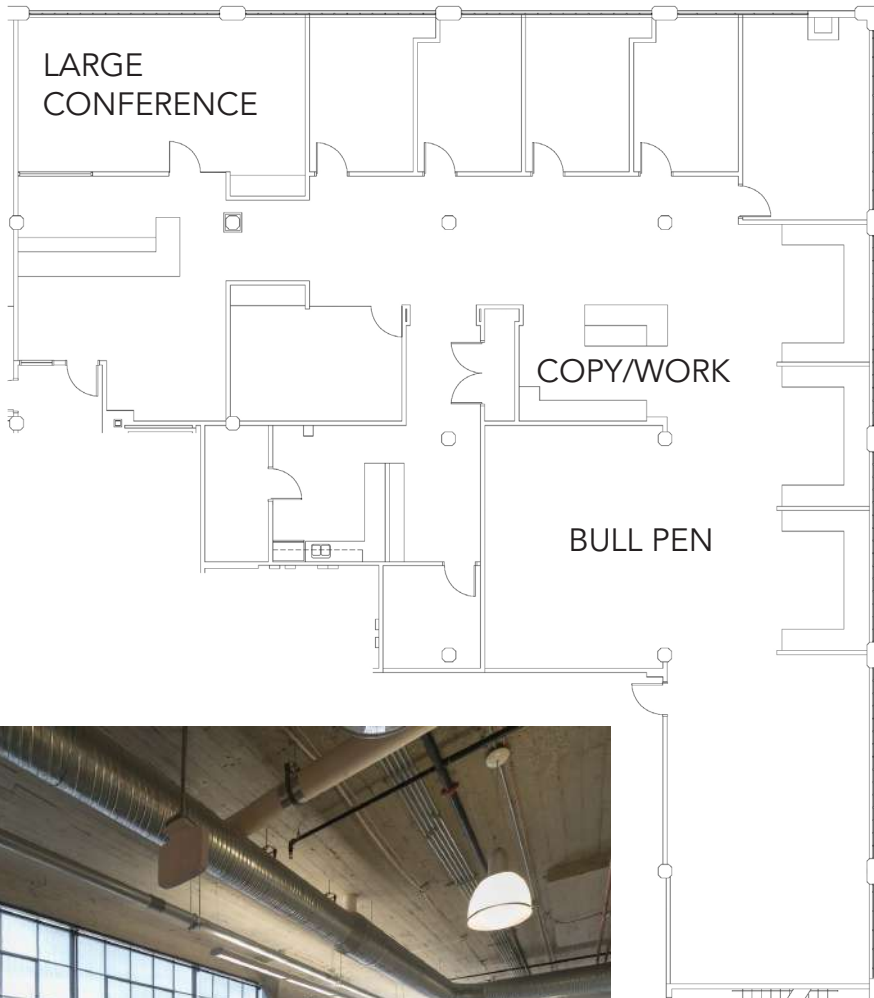


**BEACON
PARTNERS**

CEDAR HILL

800 W. HILL STREET | SUITE 400 | CHARLOTTE, NC 28208

4TH FLOOR: 6,226 SF



FOR MORE INFORMATION, CONTACT:

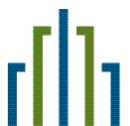
KRISTY VENNING

704.926.1409

kristy@beacondevelopment.com

500 East Morehead Street | Suite 200 | Charlotte, NC 28202

www.beacondevelopment.com



**BEACON
PARTNERS**