

CEDAR HILL

800 W. HILL STREET | SUITES #100, #101 | CHARLOTTE, NC 28208



OFFICE SPACE IN SOUTH END AVAILABLE FOR LEASE

4,842 SF | 6,608 SF

- Two first floor suites available
- A premier five-story historic brick building; built in 1926
- Free surface parking: 3 per 1,000
- Located off of Morehead Street at the corner of Cedar and Hill Street; directly next to Bank of America Stadium
- Free bike share program
- Incredible views of Uptown and BofA stadium, large rooftop deck, free parking
- Lobby and interior/exterior signage renovated in 2017 to reflect the history of the building
- Immediate access to I-77, I-277 and Charlotte CBD
- Beacon Partners owns, leases and manages over 1 million SF in Midtown and South End area



FOR MORE INFORMATION, CONTACT:

KRISTY VENNING
704.926.1409 (d)
kristy@beacondevelopment.com

500 East Morehead Street | Suite 200 | Charlotte, NC 28202
www.beacondevelopment.com

ERIN SHAW
704.926.1414 (d)
erin@beacondevelopment.com

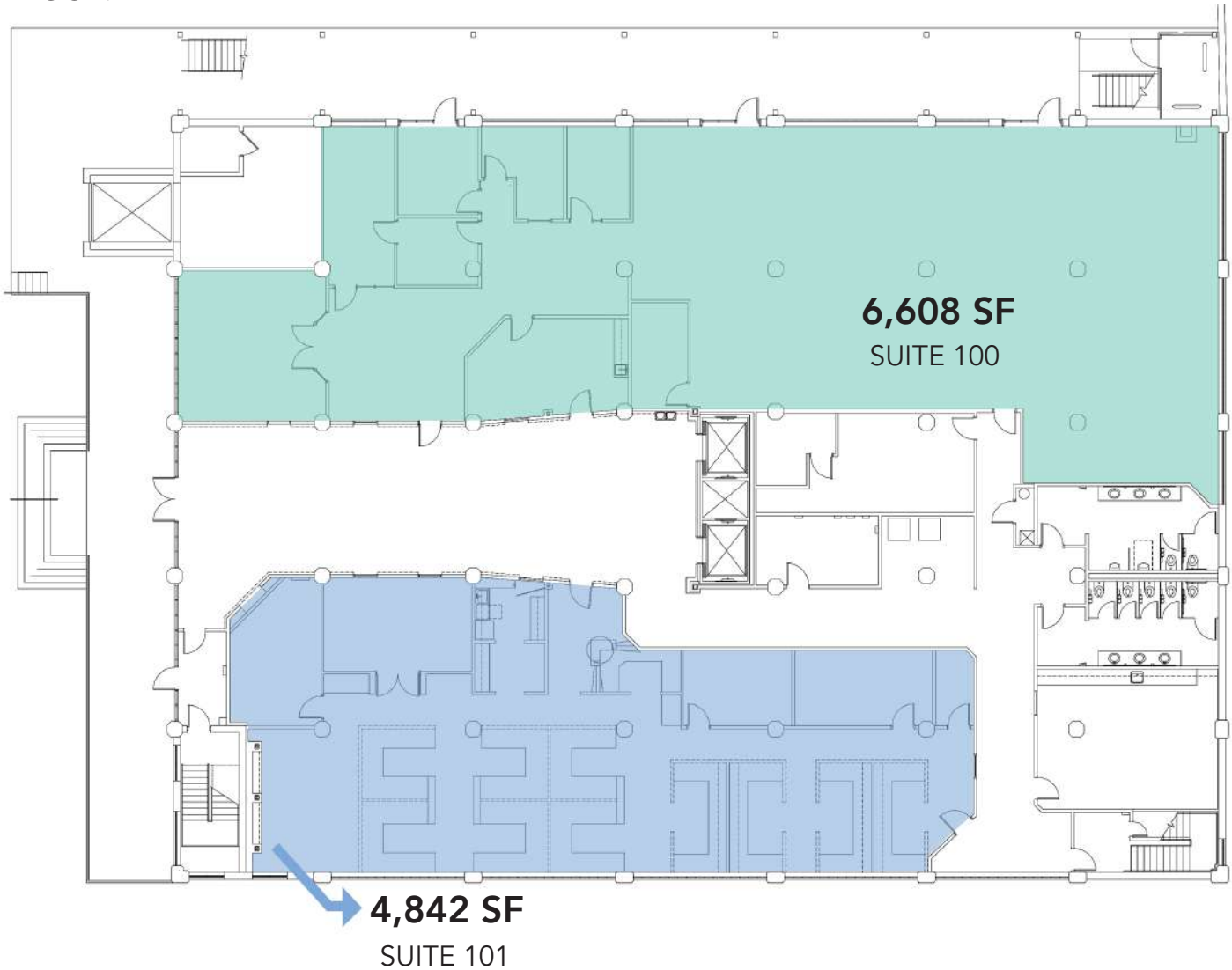
500 East Morehead Street | Suite 200 | Charlotte, NC 28202
www.beacondevelopment.com



CEDAR HILL

800 W. HILL STREET | SUITES #100, #101 | CHARLOTTE, NC 28208

1ST FLOOR:



FOR MORE INFORMATION, CONTACT:

KRISTY VENNING
704.926.1409 (d)
kristy@beacondevelopment.com

500 East Morehead Street | Suite 200 | Charlotte, NC 28202
www.beacondevelopment.com

ERIN SHAW
704.926.1414 (d)
erin@beacondevelopment.com

500 East Morehead Street | Suite 200 | Charlotte, NC 28202
www.beacondevelopment.com

