

# DUNAVANT CORNERS

2300-2306 DUNAVANT ST | CHARLOTTE, NC 28203



CREATIVE OFFICE AVAILABLE FOR LEASE

**3,615 up to 11,343 SF**

- Warehouse conversion, ideal for retail/office/show room user
- Located in the heart of South End within easy walk distance to two LYNX Blue Line Stations
- Exterior renovations underway
- Exposed ceiling and spiral duct features throughout
- Excellent signage opportunities
- Free surface parking in front of each suite
- Less than 2 miles from I-77, I-277 and Charlotte CBD
- Beacon Partners leases and manages over 1 million SF in Midtown and South End



FOR MORE INFORMATION, CONTACT:

**KRISTY VENNING**

704.926.1409 (d) [kristy@beacondevelopment.com](mailto:kristy@beacondevelopment.com)

500 East Morehead Street | Suite 200 | Charlotte, NC 28202

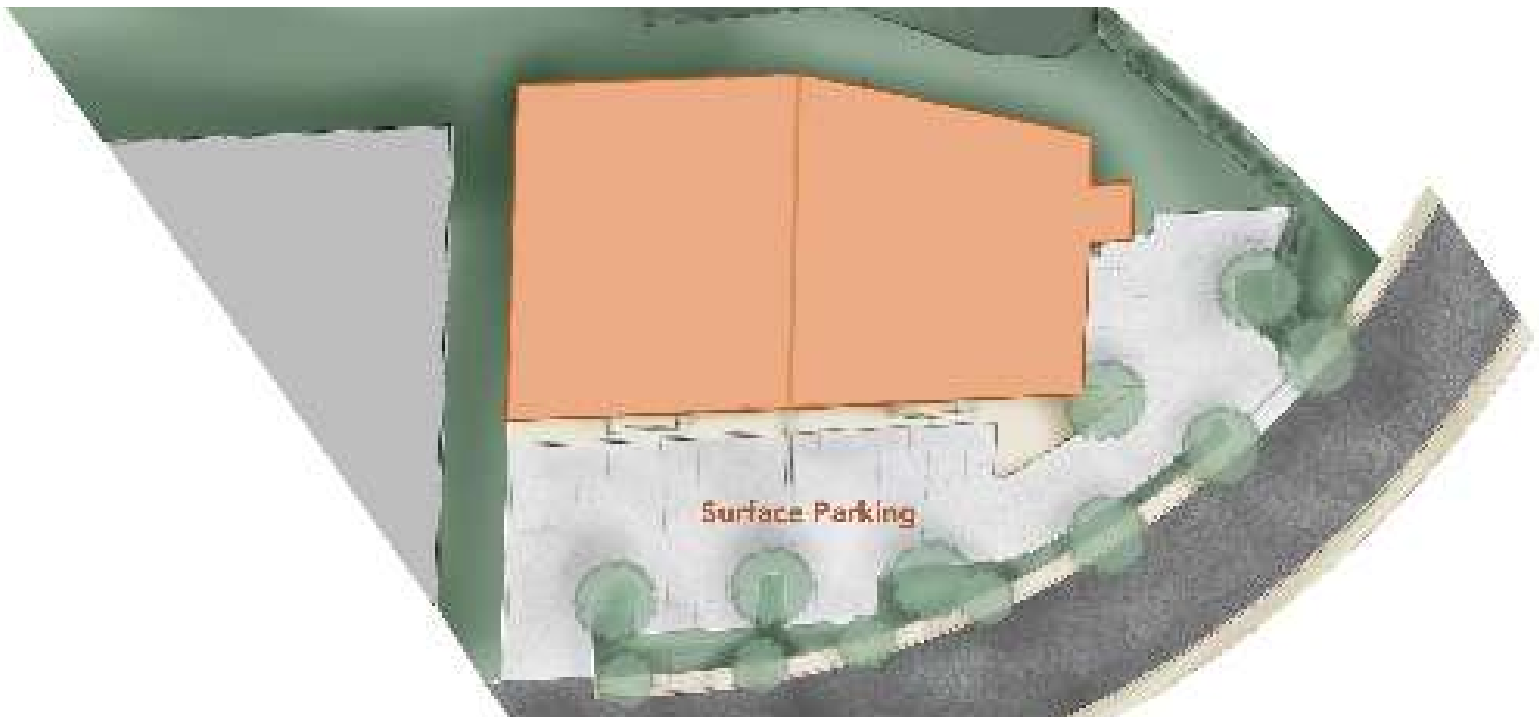
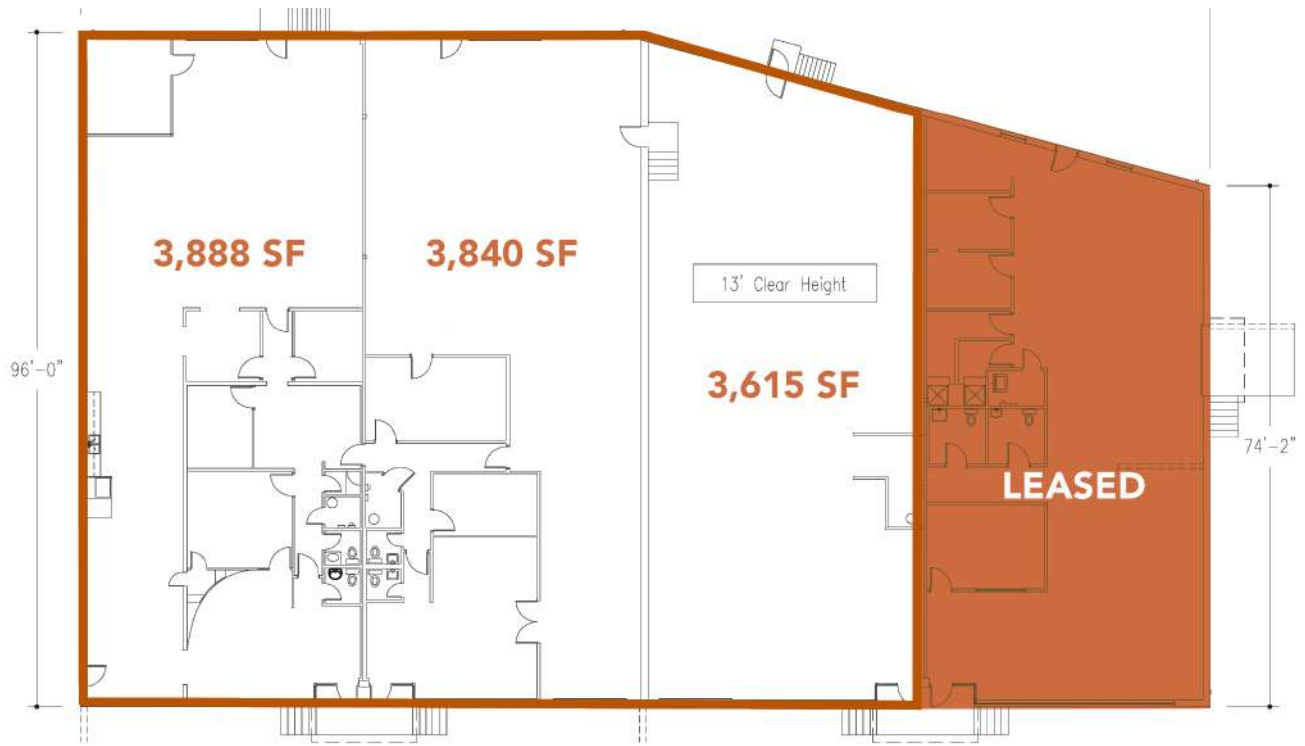
[www.beacondevelopment.com](http://www.beacondevelopment.com)



# DUNAVANT CORNERS

2300-2306 DUNAVANT ST | CHARLOTTE, NC 28203

AVAILABLE: 11,343 SF



FOR MORE INFORMATION, CONTACT:

**KRISTY VENNING**

704.926.1409 (d) [kristy@beacondevelopment.com](mailto:kristy@beacondevelopment.com)

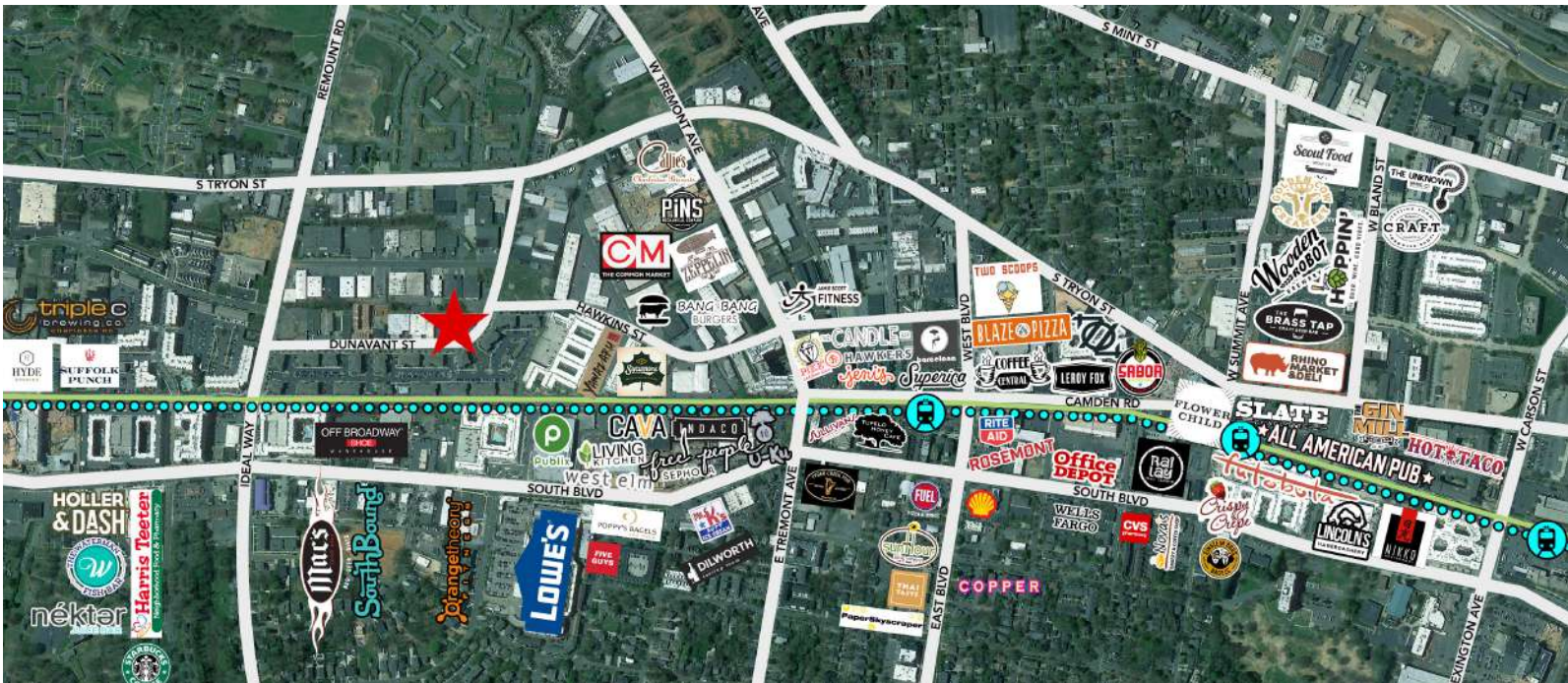
500 East Morehead Street | Suite 200 | Charlotte, NC 28202

[www.beacondevelopment.com](http://www.beacondevelopment.com)



# DUNAVANT CORNERS

2300-2306 DUNAVANT ST | CHARLOTTE, NC 28203



FOR MORE INFORMATION, CONTACT:

**KRISTY VENNING**

704.926.1409 (d) [kristy@beacondevelopment.com](mailto:kristy@beacondevelopment.com)

500 East Morehead Street | Suite 200 | Charlotte, NC 28202

[www.beacondevelopment.com](http://www.beacondevelopment.com)

