



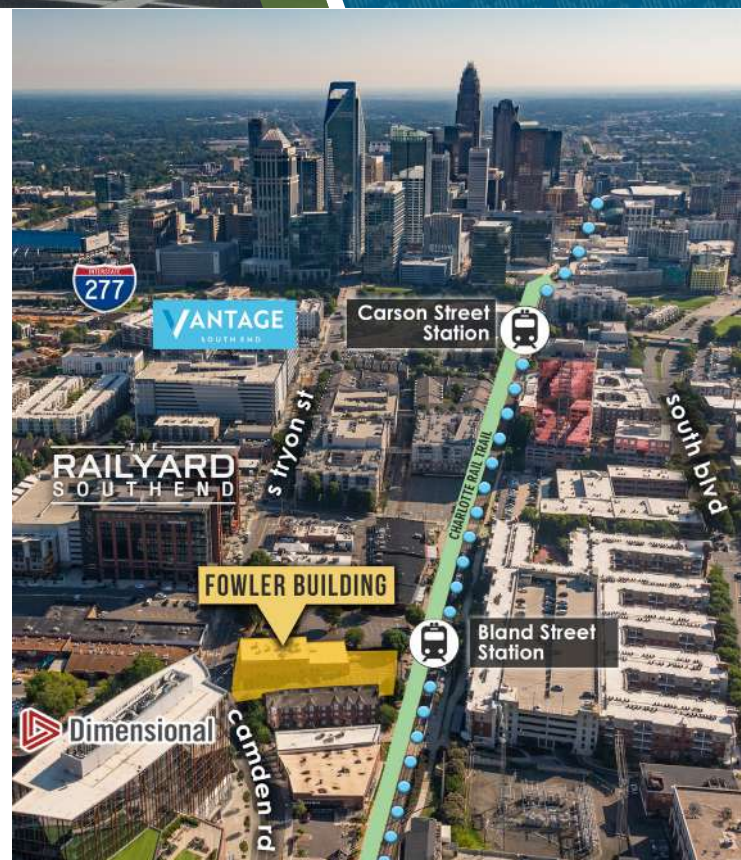
 BEACON
PARTNERS

FOWLER BUILDING

1447 S TRYON STREET
SUITES 100 - 200
CHARLOTTE, NC 28203

±10,486 SF OFFICE FOR LEASE

- Move-in ready creative open space
- A premier three-story historic building; built in 1928
- Interior staircase privately connects both suites
- Located directly on the Bland Street light rail station
- Free surface parking
- Excellent visibility at the prominent intersection of Camden Road and South Tryon Street
- Exposed bricks, beams, original windows with modern finishes
- Less than 5 minutes from I-77, I-277 and Charlotte CBD



 BEACON
PARTNERS
Investing in the future of our community

FOR MORE INFORMATION, CONTACT:

CLAIRE SHEALY

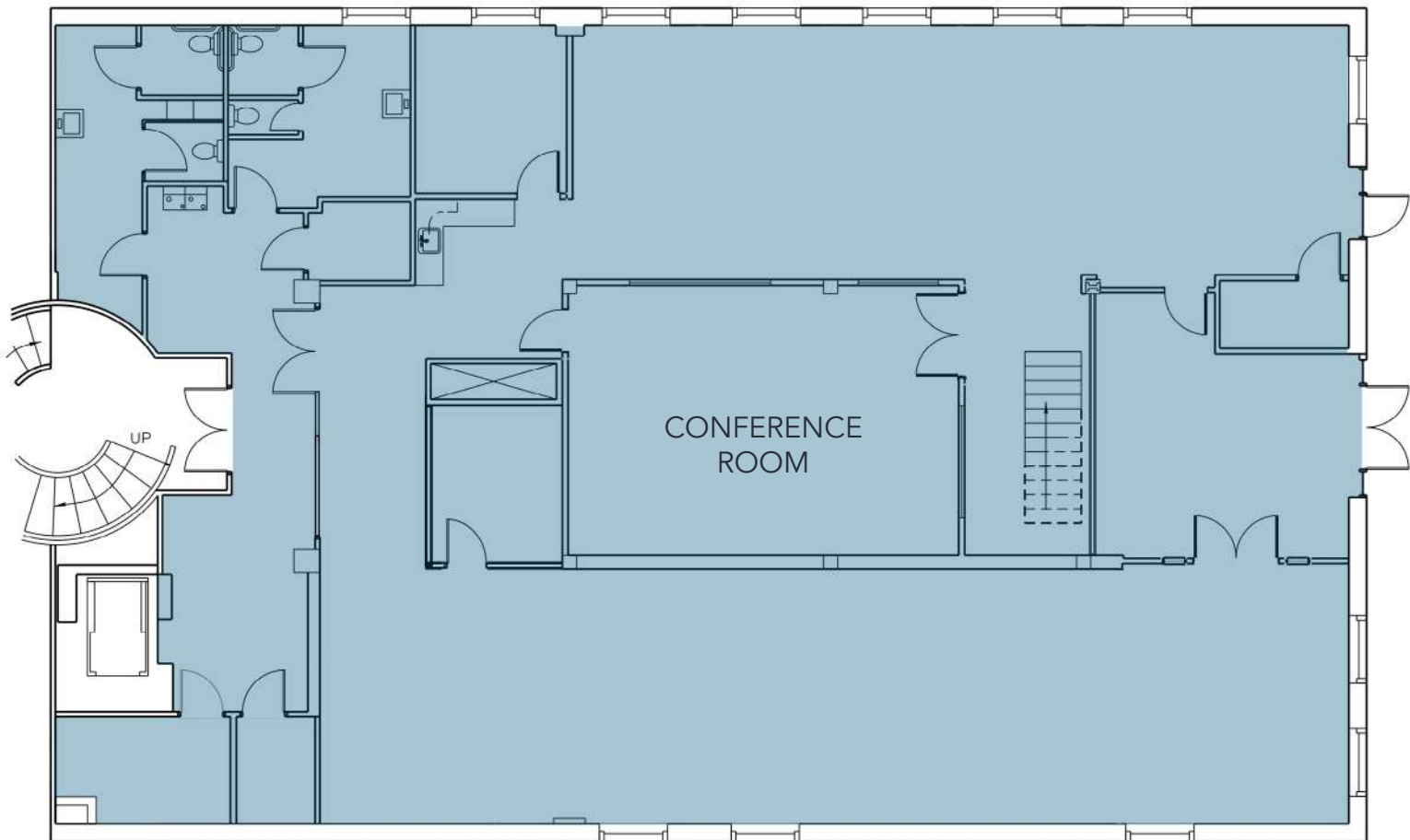
704.926.1409 (d) | claire@beacondevelopment.com

www.beacondevelopment.com

FOWLER BUILDING

1447 S TRYON STREET
SUITES 100 - 200
CHARLOTTE, NC 28203

SUITE 100: +5,073 SF



FOR MORE INFORMATION, CONTACT:

CLAIRE SHEALY

704.926.1409 (d) | claire@beacondevelopment.com

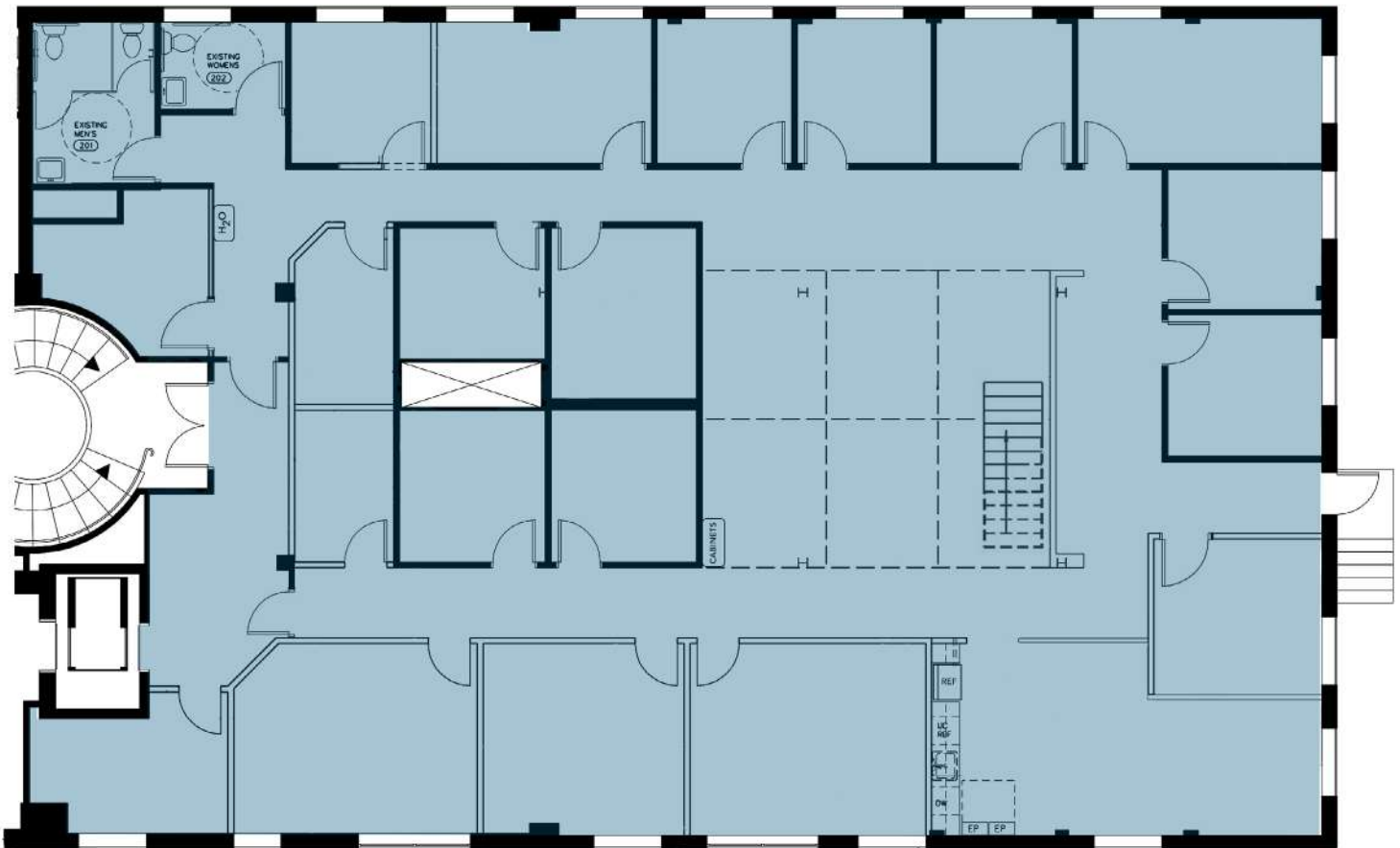
www.beacondevelopment.com



FOWLER BUILDING

1447 S TRYON STREET
SUITES 100 - 200
CHARLOTTE, NC 28203

SUITE 200: +5,413 SF



FOR MORE INFORMATION, CONTACT:

CLAIRE SHEALY

704.926.1409 (d) | claire@beacondevelopment.com

www.beacondevelopment.com



FOWLER BUILDING

1447 S TRYON STREET
SUITES 100 - 200
CHARLOTTE, NC 28203

Beacon Partners is a commercial real estate firm specializing in the development, acquisition, and operation of industrial, office and mixed-use properties. Beacon leases, owns or manages more than 14.5 million square feet of space throughout the Carolinas.



FOR MORE INFORMATION, CONTACT:

CLAIRE SHEALY

704.926.1409 (d) | claire@beacondevelopment.com

www.beacondevelopment.com