

# THE FOWLER BUILDING

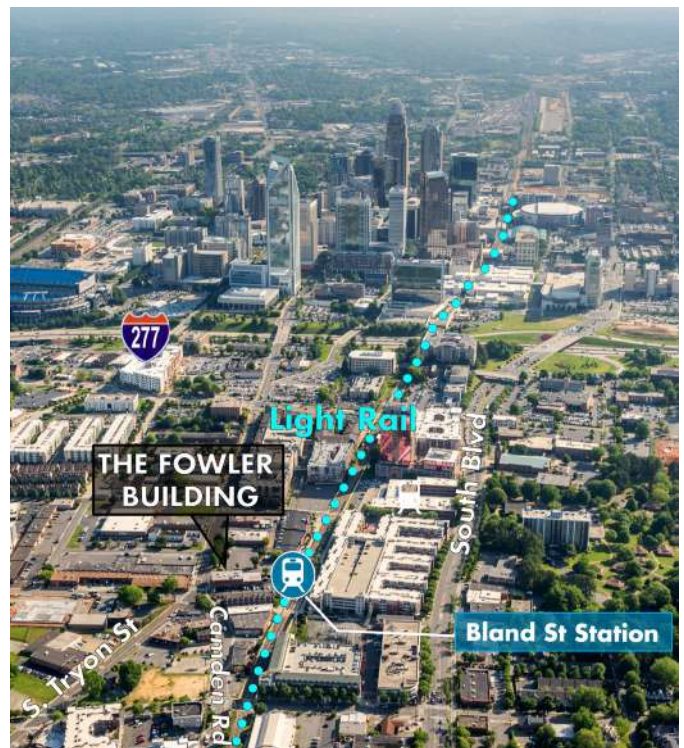
1447 S TRYON STREET, SUITE 300 | CHARLOTTE, NC 28203



OFFICE SPACE IN SOUTH END AVAILABLE FOR LEASE

**±2,262 SF**

- Move-in ready creative open space
- Available April 1, 2020
- A premier three-story historic building; built in 1928
- Renovated in 2012
- Located directly on the Bland Street light rail station
- Free surface parking
- Excellent visibility at the prominent intersection of Camden Road and South Tryon Street
- Exposed bricks, beams, original windows with modern finishes
- Less than 5 minutes from I-77, I-277 and Charlotte CBD



FOR MORE INFORMATION, CONTACT:

**KRISTY VENNING**  
704.926.1409 (d)  
[kristy@beacondevelopment.com](mailto:kristy@beacondevelopment.com)

500 East Morehead Street | Suite 200 | Charlotte, NC 28202  
[www.beacondevelopment.com](http://www.beacondevelopment.com)

**ERIN SHAW**  
704.926.1414 (d)  
[erin@beacondevelopment.com](mailto:erin@beacondevelopment.com)

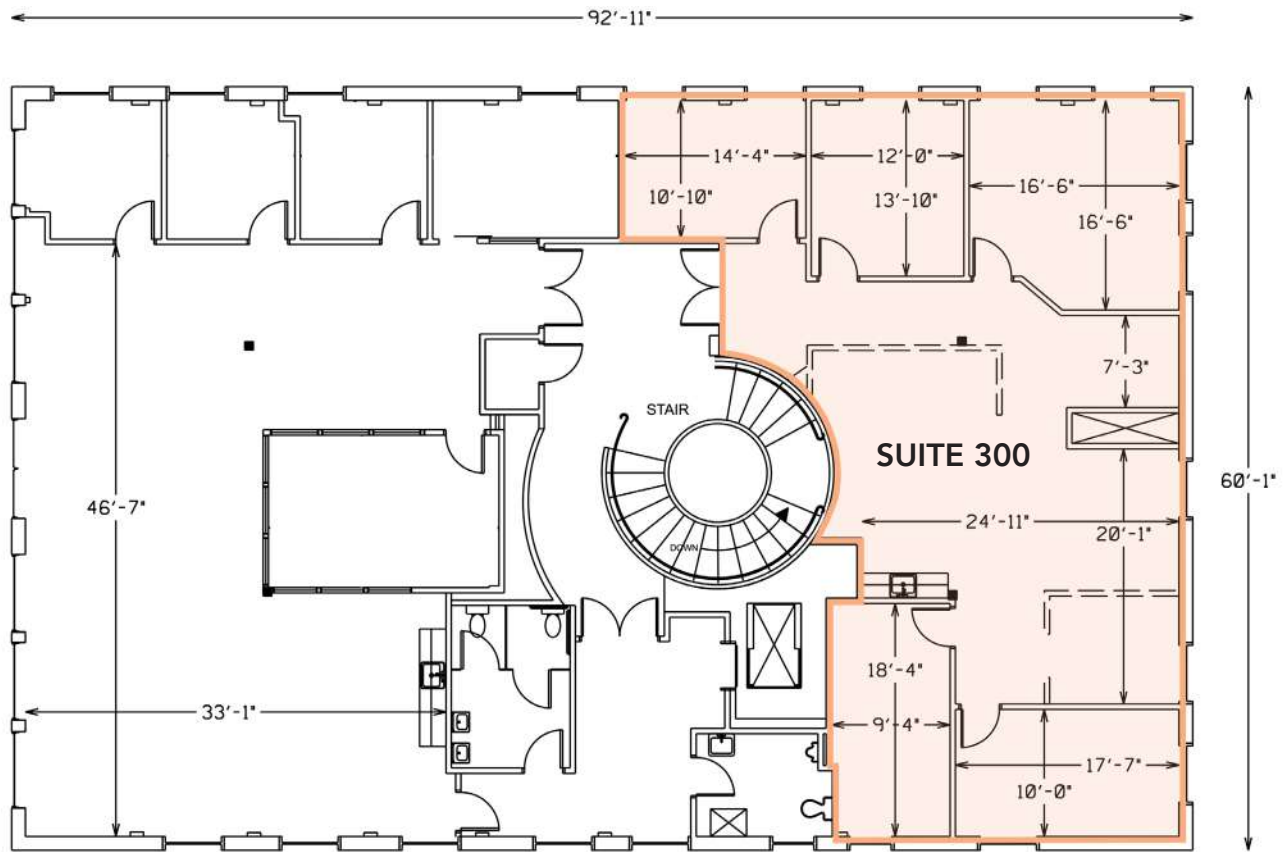
500 East Morehead Street | Suite 200 | Charlotte, NC 28202  
[www.beacondevelopment.com](http://www.beacondevelopment.com)



# THE FOWLER BUILDING

1447 S TRYON STREET, SUITE 300 | CHARLOTTE, NC 28203

FLOOR PLAN: ±2,262 SF



FOR MORE INFORMATION, CONTACT:

**KRISTY VENNING**  
704.926.1409 (d)  
[kristy@beacondevelopment.com](mailto:kristy@beacondevelopment.com)

500 East Morehead Street | Suite 200 | Charlotte, NC 28202  
[www.beacondevelopment.com](http://www.beacondevelopment.com)

**ERIN SHAW**  
704.926.1414 (d)  
[erin@beacondevelopment.com](mailto:erin@beacondevelopment.com)

500 East Morehead Street | Suite 200 | Charlotte, NC 28202  
[www.beacondevelopment.com](http://www.beacondevelopment.com)



# THE FOWLER BUILDING

1447 S TRYON STREET, SUITE 300 | CHARLOTTE, NC 28203

AERIAL:



FOR MORE INFORMATION, CONTACT:

**KRISTY VENNING**  
704.926.1409 (d)  
[kristy@beacondevelopment.com](mailto:kristy@beacondevelopment.com)

500 East Morehead Street | Suite 200 | Charlotte, NC 28202  
[www.beacondevelopment.com](http://www.beacondevelopment.com)

**ERIN SHAW**  
704.926.1414 (d)  
[erin@beacondevelopment.com](mailto:erin@beacondevelopment.com)

500 East Morehead Street | Suite 200 | Charlotte, NC 28202  
[www.beacondevelopment.com](http://www.beacondevelopment.com)

