



THE FOWLER BUILDING

1447 S TRYON STREET
SUITE 301
CHARLOTTE, NC 28203

+2,872 SF OFFICE FOR LEASE

- Move-in ready creative open space located in South End, Charlotte
- A premier three-story historic building; built in 1928
- Located directly on the Bland Street light rail station
- Free surface parking
- Excellent visibility at the prominent intersection of Camden Road and South Tryon Street
- Exposed bricks, beams, original windows with modern finishes
- Less than 5 minutes from I-77, I-277 and Charlotte CBD



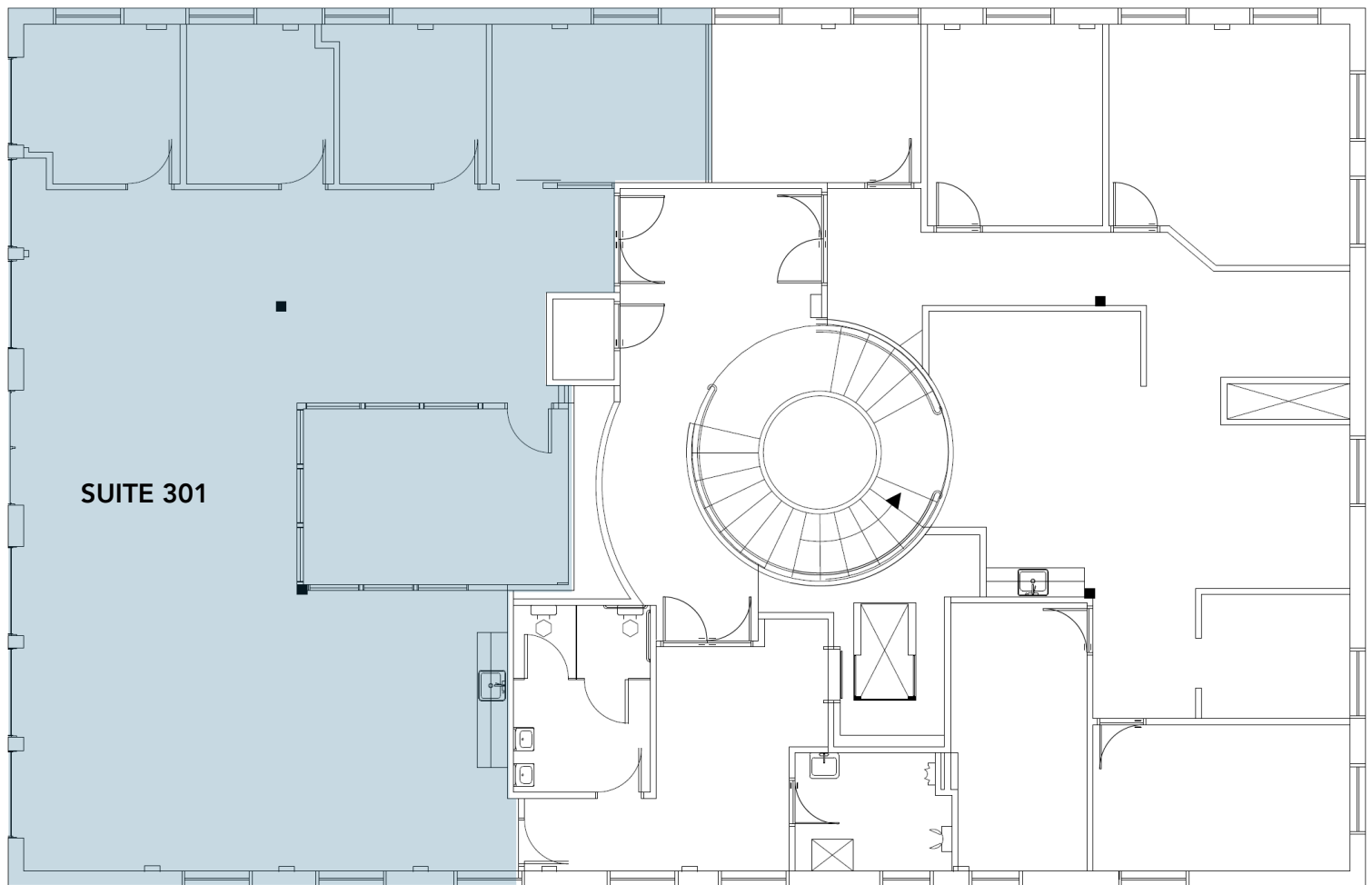


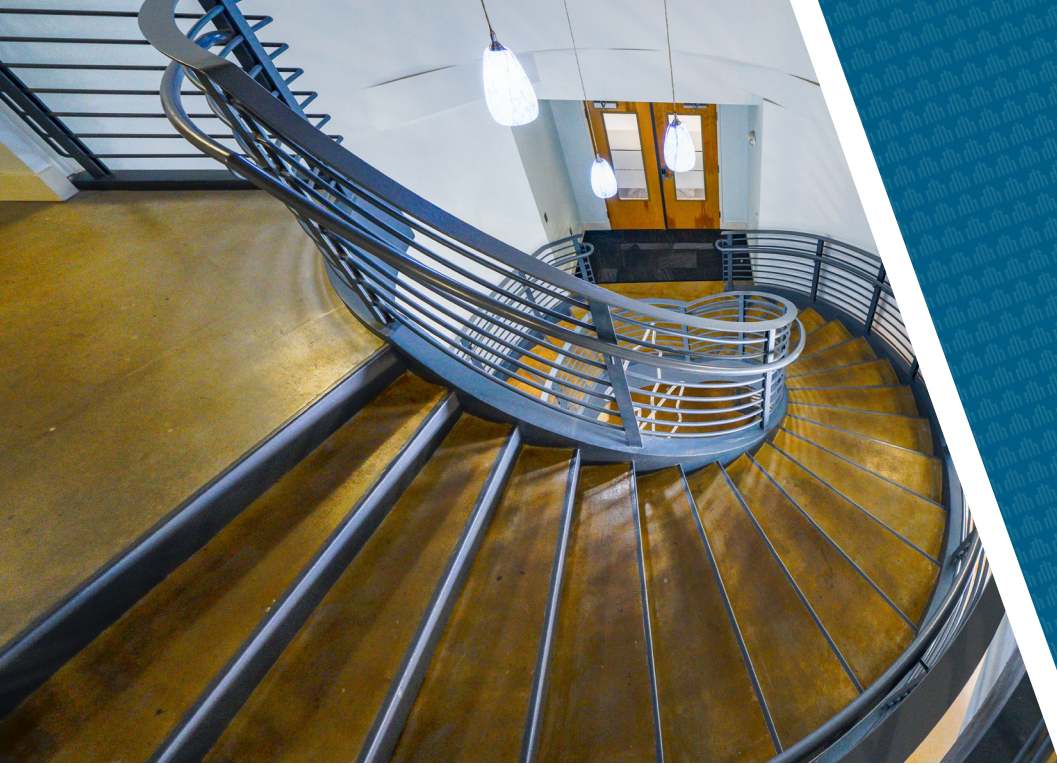
THE FOWLER BUILDING

1447 S TRYON STREET
SUITE 301
CHARLOTTE, NC 28203

TAKE A TOUR

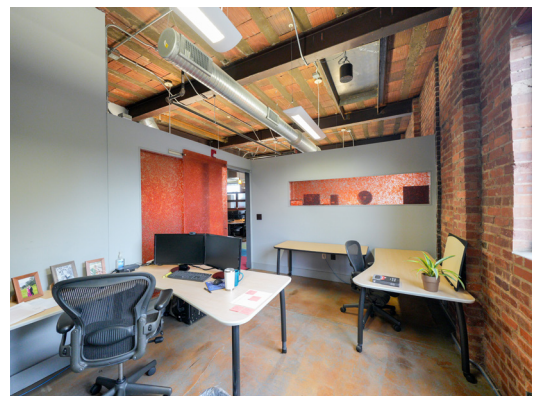
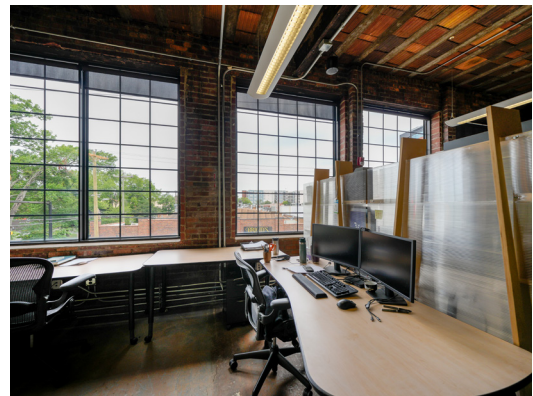
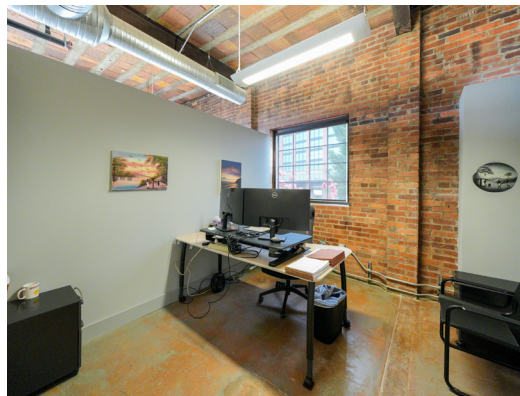
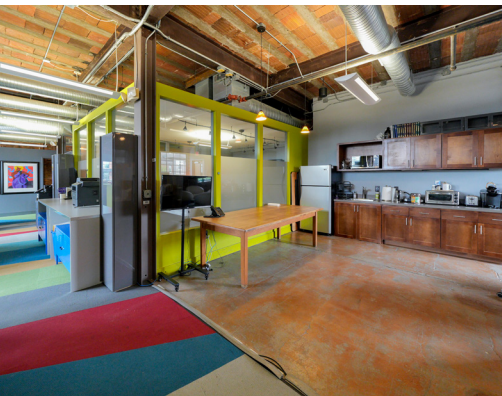
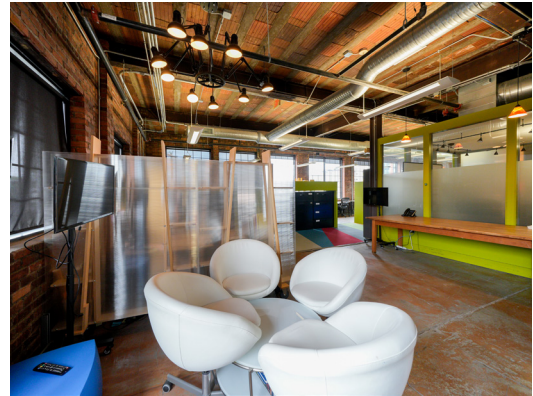
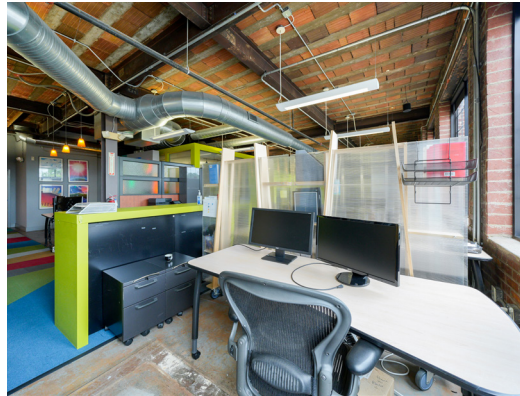
SUITE 301: +2,872 SF





THE FOWLER BUILDING

1447 S TRYON STREET
SUITE 301
CHARLOTTE, NC 28203



BEACON
PARTNERS

CLAIRE SHEALY
704.607.1984 (c) | 704.926.1409 (d)
claire@beacondevelopment.com

THE FOWLER BUILDING

1447 S TRYON STREET
SUITE 301
CHARLOTTE, NC 28203



Beacon Partners is a commercial real estate firm specializing in the development, acquisition, and operation of industrial, office and mixed-use properties. Beacon leases, owns or manages more than 17.5+ million square feet of space throughout the Carolinas.