

THE FOWLER BUILDING

1447 S TRYON STREET, SUITE 301 | CHARLOTTE, NC 28203



OFFICE SPACE IN SOUTH END AVAILABLE FOR LEASE

+2,872 SF

- Move-in ready creative open space
- A premier three-story historic building; built in 1928
- Available August 2020
- Located directly on the Bland Street light rail station
- Free surface parking
- Excellent visibility at the prominent intersection of Camden Road and South Tryon Street
- Exposed bricks, beams, original windows with modern finishes
- Less than 5 minutes from I-77, I-277 and Charlotte CBD



FOR MORE INFORMATION, CONTACT:

KRISTY VENNING
704.926.1409 (d)
kristy@beacondevelopment.com

500 East Morehead Street | Suite 200 | Charlotte, NC 28202
www.beacondevelopment.com

ERIN SHAW
704.926.1414 (d)
erin@beacondevelopment.com

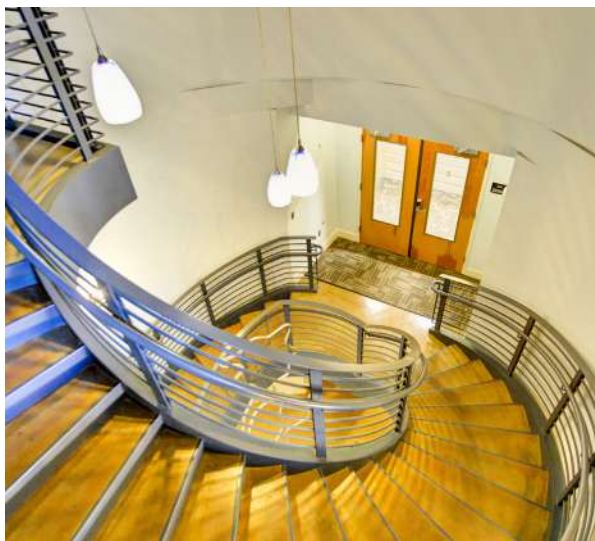
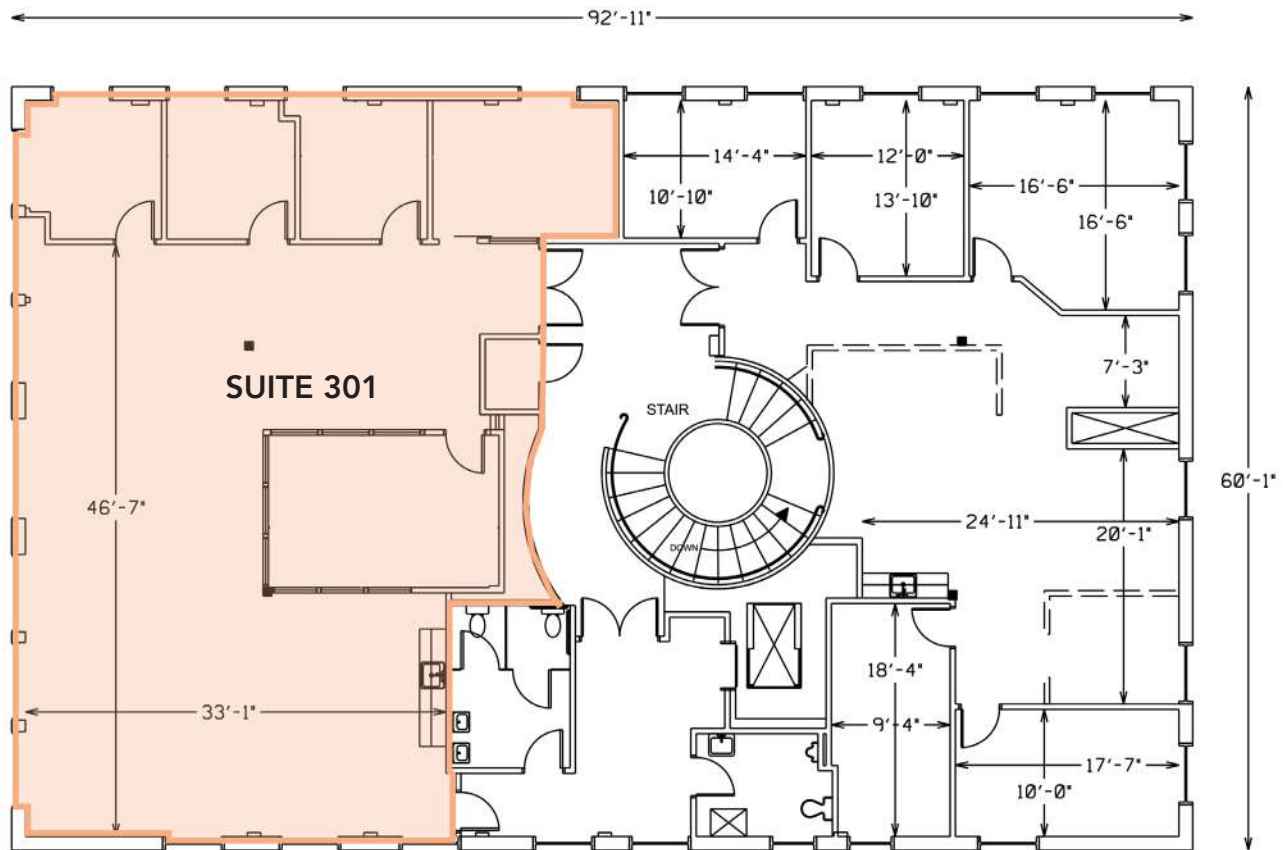
500 East Morehead Street | Suite 200 | Charlotte, NC 28202
www.beacondevelopment.com



THE FOWLER BUILDING

1447 S TRYON STREET, SUITE 301 | CHARLOTTE, NC 28203

FLOOR PLAN: ±2,872 SF



FOR MORE INFORMATION, CONTACT:

KRISTY VENNING
704.926.1409 (d)
kristy@beacondevelopment.com

500 East Morehead Street | Suite 200 | Charlotte, NC 28202
www.beacondevelopment.com

ERIN SHAW
704.926.1414 (d)
erin@beacondevelopment.com

500 East Morehead Street | Suite 200 | Charlotte, NC 28202
www.beacondevelopment.com

