

# MOREHEAD CORPORATE PLAZA

1043 E MOREHEAD STREET, #300 | CHARLOTTE, NC 28204



## AVAILABLE FOR LEASE **6,327 SF** OFFICE SPACE IN MIDTOWN

- A premier three-story office building
- Corner suite with incredible Uptown Charlotte views
- Abundant free parking
- Less than 2 minutes from I-77, I-277 and Charlotte CBD
- Numerous amenities nearby including Dowd YMCA, the Metropolitan, restaurants/retail, The Little Sugar Creek Greenway and Atrium Health's Main Campus
- Beacon Partners leases and manages over 1 million SF in Midtown and South End



FOR MORE INFORMATION, CONTACT:

**KRISTY VENNING**

704.926.1409 (d)

[kristy@beacondevelopment.com](mailto:kristy@beacondevelopment.com)

500 E. Morehead St | Suite 200 | Charlotte, NC 28202 | [beacondevelopment.com](http://beacondevelopment.com)

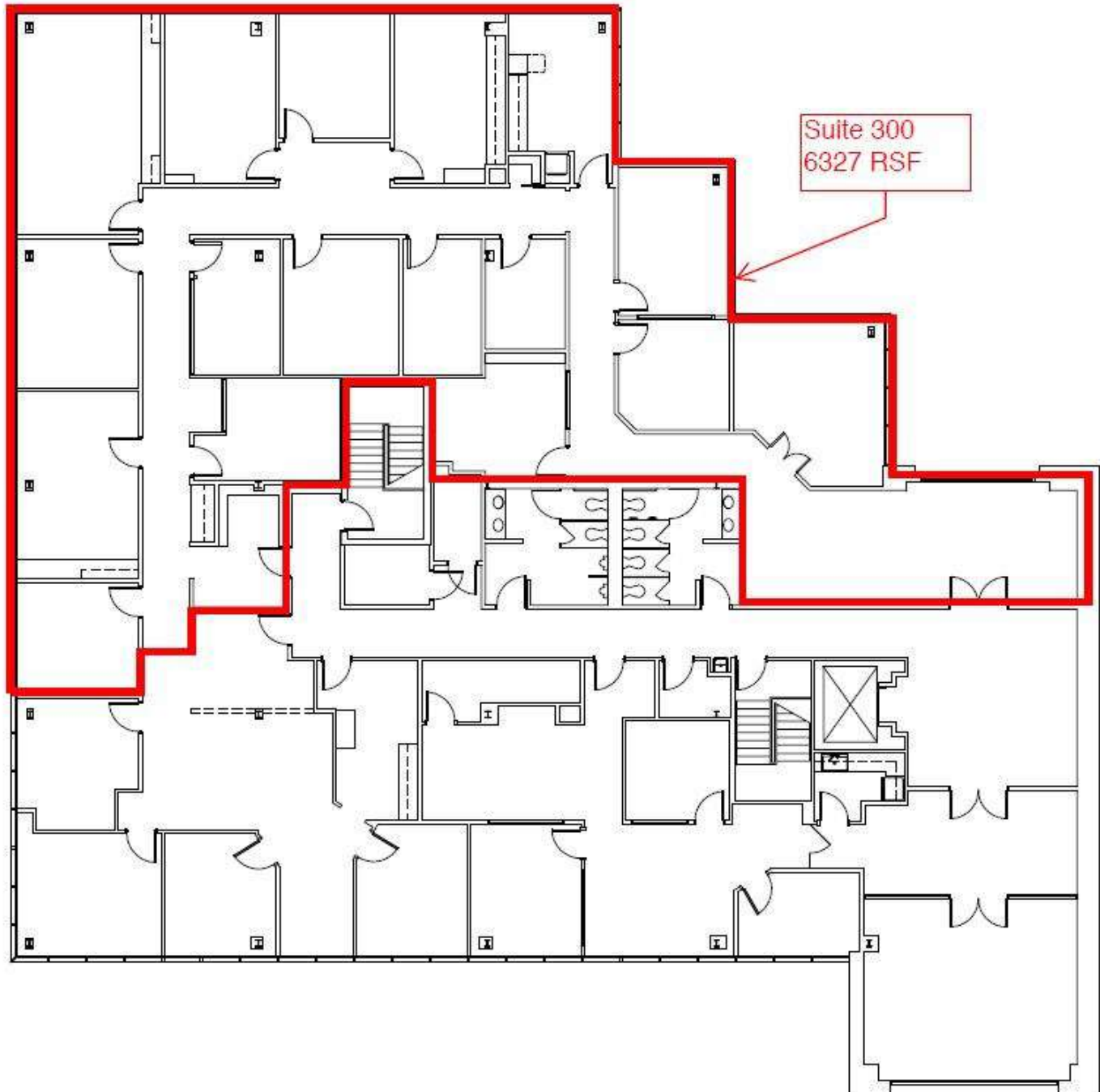




# MOREHEAD CORPORATE PLAZA

1043 E MOREHEAD STREET | CHARLOTTE, NC 28204

SUITE 300: 6,327 SF



FOR MORE INFORMATION, CONTACT:

KRISTY VENNING

704.926.1409 (d)

[kristy@beacondevelopment.com](mailto:kristy@beacondevelopment.com)

500 E Morehead St | Suite 200 | Charlotte, NC 28202 | [beacondevelopment.com](http://beacondevelopment.com)

