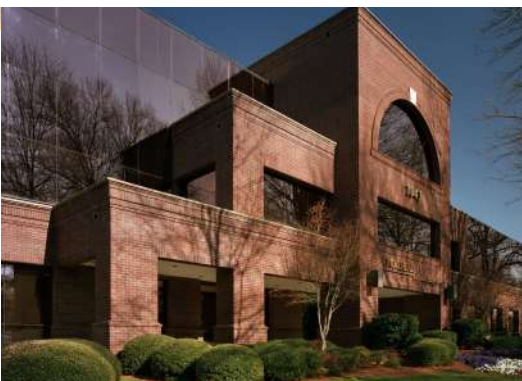


MOREHEAD CORPORATE PLAZA

1043 E MOREHEAD STREET, 110 | CHARLOTTE, NC 28204



AVAILABLE FOR LEASE
5,126 SF
OFFICE SPACE IN MIDTOWN

- A premier three-story office building
- Corner suite of first floor lobby
- Abundant free parking
- Less than 2 minutes from I-77, I-277 and Charlotte CBD
- Numerous amenities nearby including Dowd YMCA, the Metropolitan, restaurants/retail, Art's BBQ and Deli, The Little Sugar Creek Greenway and Carolinas Healthcare Main Campus
- Beacon Partners leases and manages over 1,000,000 SF in the Midtown and South End areas



FOR MORE INFORMATION, CONTACT:

KRISTY VENNING

704.926.1409 (d) 540.420.9351 (m)

kristy@becondevelopment.com

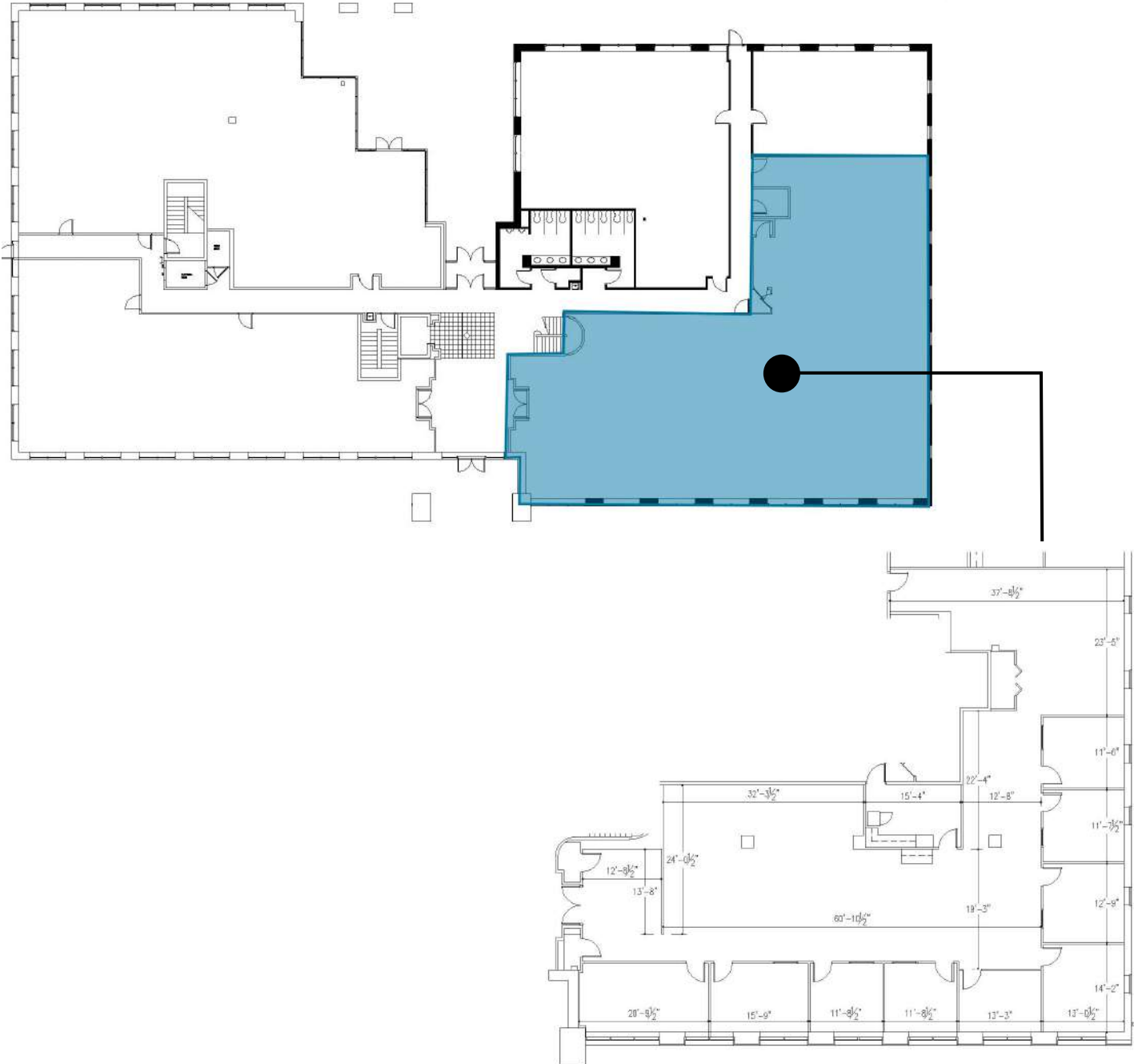
500 E. Morehead Street | Suite 200 | Charlotte, NC 28202 | becondevelopment.com



MOREHEAD CORPORATE PLAZA

1043 E MOREHEAD STREET, 110 | CHARLOTTE, NC 28204

SUITE 110: 5,126 SF



FOR MORE INFORMATION, CONTACT:

KRISTY VENNING

704.926.1409 (d) 540.420.9351 (m)

kristy@beacondevelopment.com

500 E. Morehead Street | Suite 200 | Charlotte, NC 28202 | beacondevelopment.com

