



AVAILABLE FOR LEASE
6,327 SF
OFFICE SPACE IN MIDTOWN

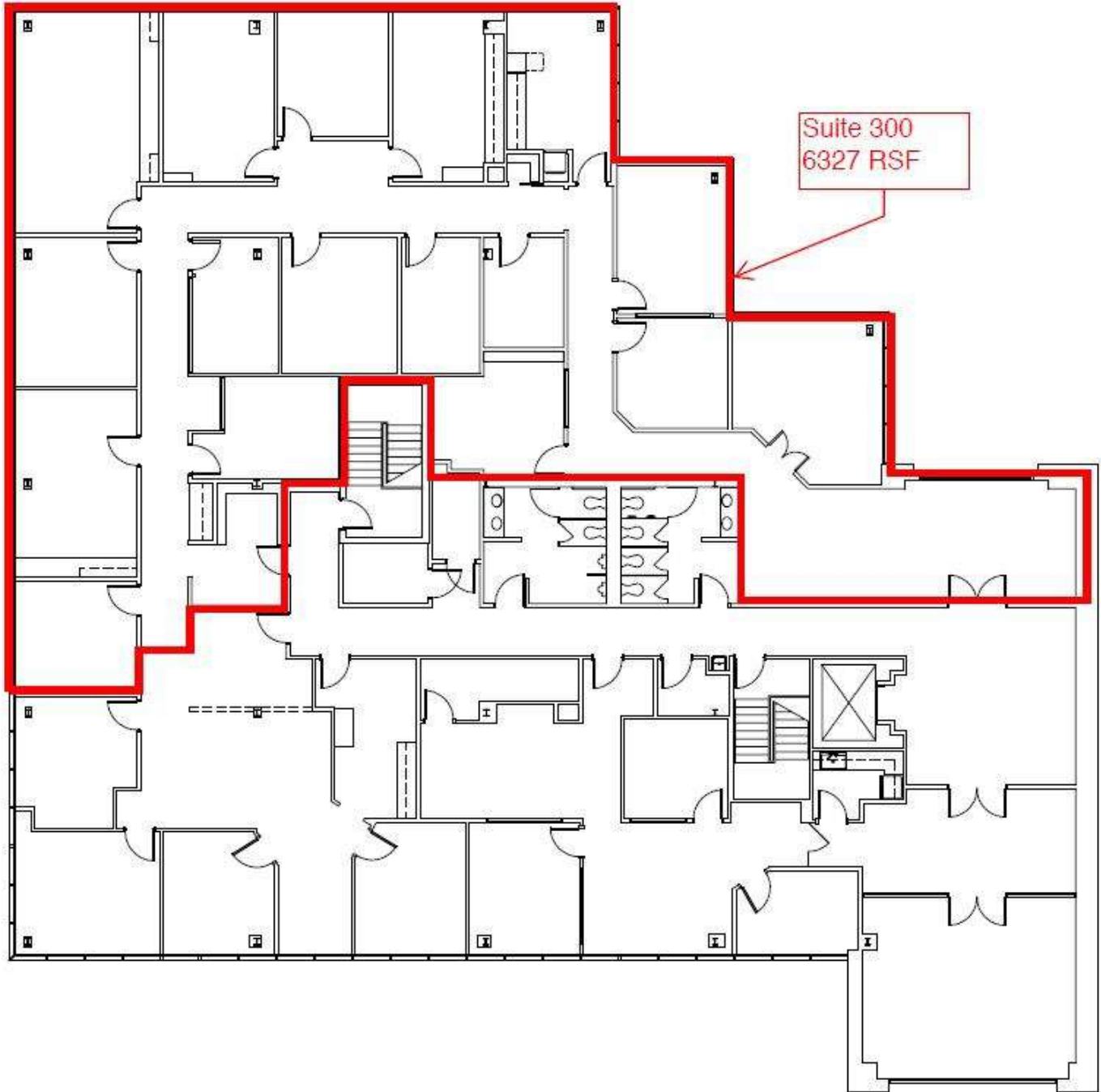
- A premier three-story office building
- Corner suite with incredible Uptown Charlotte views
- Abundant free parking
- Less than 2 minutes from I-77, I-277 and Charlotte CBD
- Numerous amenities nearby including Dowd YMCA, the Metropolitan, restaurants/retail, Art's BBQ and Deli, The Little Sugar Creek Greenway and Carolinas Healthcare Main Campus
- Beacon Partners leases and manages over 1,000,000 SF in Midtown and South End



MOREHEAD CORPORATE PLAZA

1043 E MOREHEAD STREET | CHARLOTTE, NC 28204

SUITE 300: 6,327 SF



500 E. Morehead Street | Suite 200
Charlotte, NC 28202
www.beacondevelopment.com

FOR MORE INFORMATION, CONTACT:

Kristy Venning
704.926.1409
kristy@beacondevelopment.com

