

nōDā  
CO-OP

2226  
N DAVIDSON  
STREET  
CHARLOTTE, NC



OFFICE & RETAIL OPPORTUNITIES  
UP TO 47,000 SQUARE FEET

BEACON  
PARTNERS





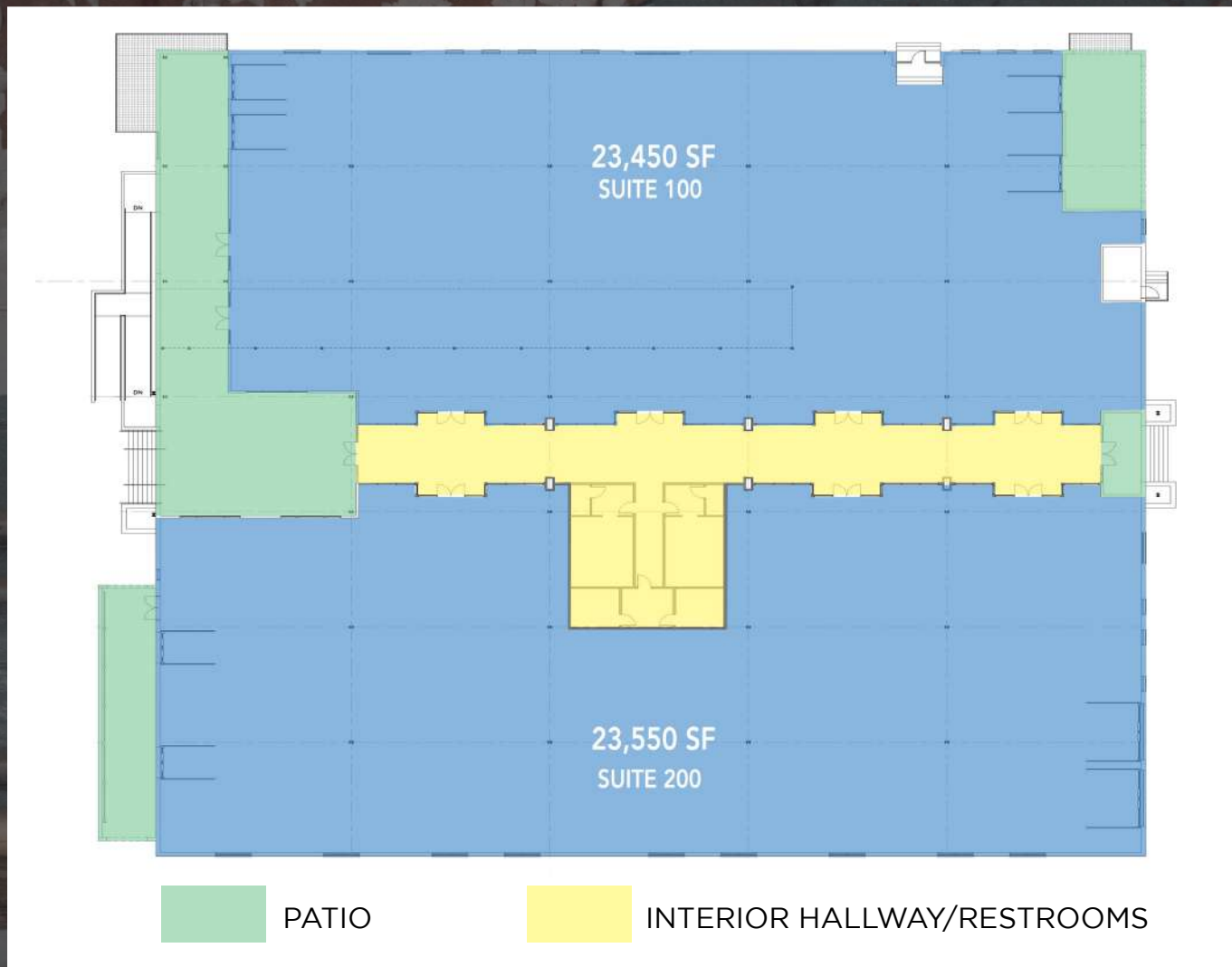
## 5,000 – 47,000 SQUARE FEET OF OFFICE OR RETAIL SPACE AVAILABLE

- Located within the dynamic North Davidson Street corridor between 25th & 26th Streets, NoDa Co-Op is surrounded by multi-family, retail and office developments
- Flexible floorplate with the ability to subdivide for smaller users and multiple private patios available
- Adjacent to the “living bridge” that will provide pedestrian and vehicle access to the 25th St LYNX Blue Line Stop, just one block away
- Surface parking, up to 2 per 1,000 SF
- Dedicated entrance and building signage potential for office and retail suites
- Tenant-dedicated and common area patio space available
- Located within minutes of I-277, I-77 and I-85

LOCATED IN CHARLOTTE'S HISTORIC  
ARTS & ENTERTAINMENT DISTRICT







OFFICE & RETAIL OPPORTUNITIES  
UP TO 47,000 SQUARE FEET



NODÁ  
CO-OP



OFFICE & RETAIL OPPORTUNITIES  
UP TO 47,000 SQUARE FEET

BEACON  
PARTNERS





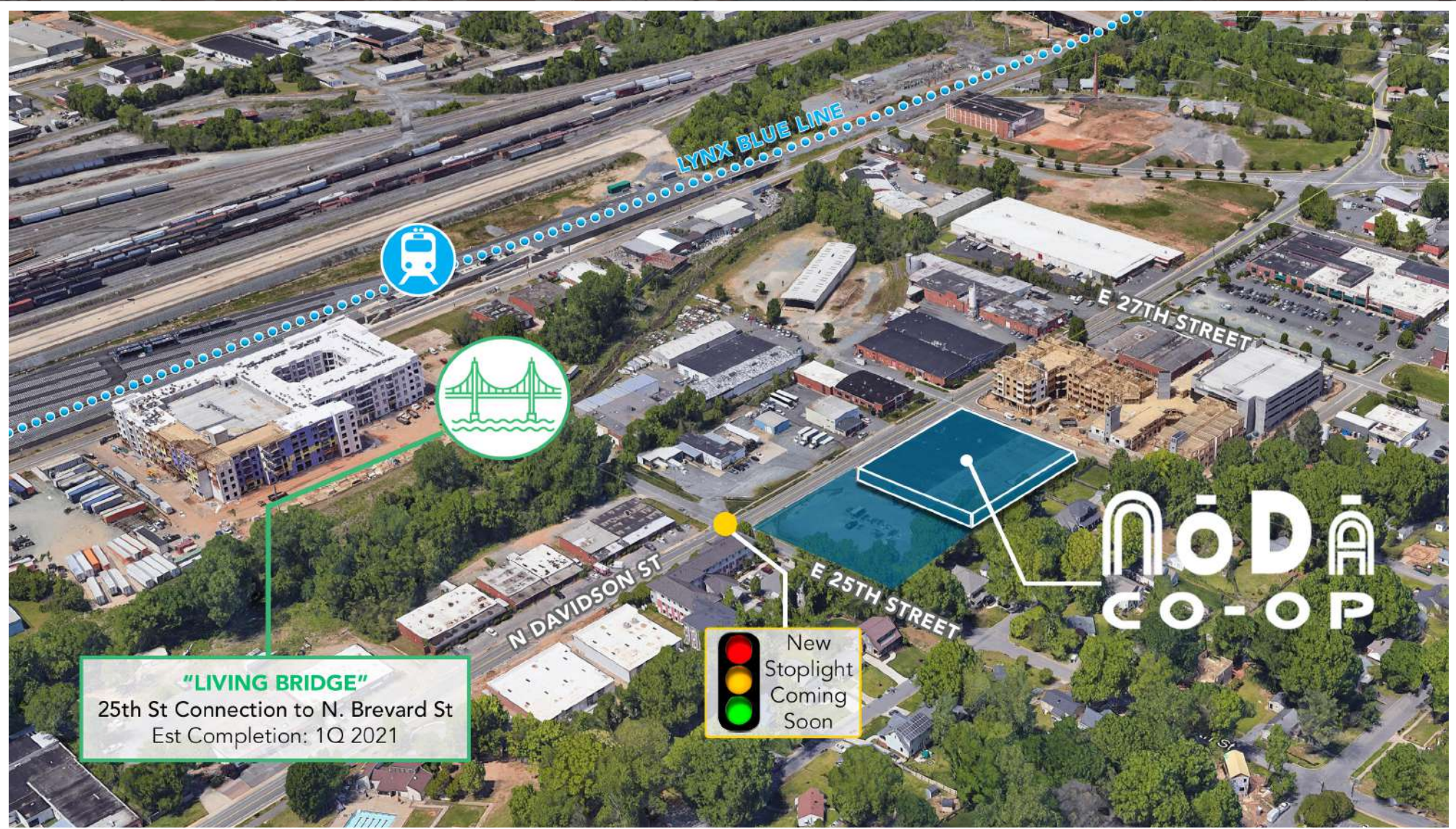
THE BLUE LINE EXTENSION HAS  
ACCELERATED GROWTH & DEVELOPMENT





THE BLUE LINE EXTENSION HAS  
ACCELERATED GROWTH & DEVELOPMENT





THE BLUE LINE EXTENSION HAS  
ACCELERATED GROWTH & DEVELOPMENT





# CONTACT

For leasing opportunities, contact:

**ERIN SHAW** 704.926.1414 [erin@beacondevelopment.com](mailto:erin@beacondevelopment.com)

**KRISTY VENNING** 704.926.1409 [kristy@beacondevelopment.com](mailto:kristy@beacondevelopment.com)

NÖDÄ  
CO-OP

BEACON  
PARTNERS