



**South End**  
SOUTH BLVD

SOUTHBOROUGH  
CHARLOTTE, NC

OFFICE FOR LEASE  
**IN SOUTH END**



BEACON  
PARTNERS



# BOUTIQUE, **CLASS A** OFFICE BUILDING

in **South End**  
with four sides of  
floor-to-ceiling glass

AMENITIZED WITH  
**THREE GROUND  
FLOOR RESTAURANTS**  
(**POPPY'S BAGELS,  
THE WINE LOFT & YUNTA NIKKEI**)

AND DIRECTLY ADJACENT TO  
**ATHERTON MILL  
RETAIL SHOPS &  
RESTAURANT OFFERINGS**

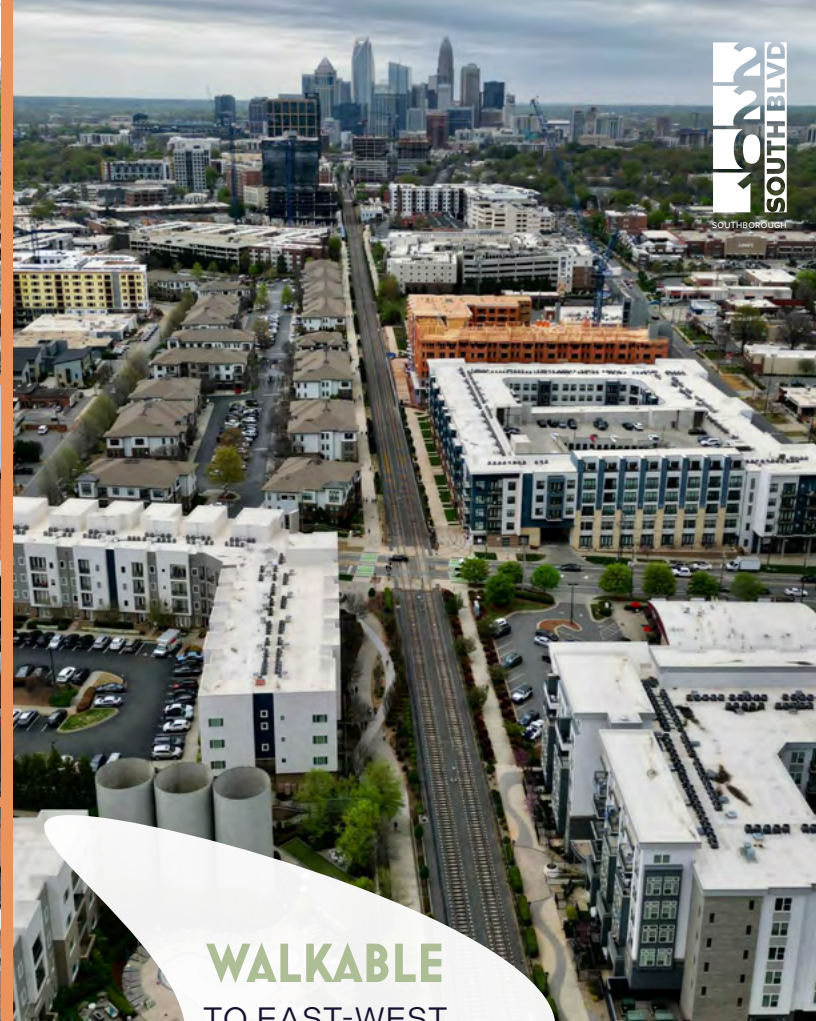
ATTACHED  
**FREE  
STRUCTURED  
PARKING**

LOCATED DIRECTLY ALONG THE  
**SOUTH END RAIL TRAIL**





EASY ACCESS TO  
**CHARLOTTE DOUGLAS  
INTERNATIONAL  
AIRPORT**



320 SOUTH BLVD  
SOUTH BORDEN



**LESS THAN 5 MINUTES**

FROM I-77, I-277, AND  
UPTOWN CHARLOTTE



**WALKABLE**  
TO EAST-WEST  
LIGHT RAIL  
STATION





## VANTAGE

Culinary Dropout  
Sixty Vines  
Dram & Draught  
Toastique  
Uptown Yolk  
Waterbean Coffee

## RAILYARD

North Italia  
Stir  
Rhino Market  
Orange Theory

## DESIGN CENTER

Barcelona Wine Bar  
Pepperbox Doughnuts  
Fit Atelier  
Elsewhere  
Superica  
Jeni's Ice Cream

Wooden Robot  
Brewery

## UPTOWN

FLOWER CHILD

Dowd YMCA

## MIDTOWN

## 1520 SOUTH

Railay Thai Cuisine  
Bk Pilaties  
Lalima  
The Peach Cobbler Factory

Snooze AM EATERY  
Silverlake Ramen

## ATHERTON MILL

Anthropologie  
Sephora  
Cava  
Lululemon  
Free People  
Bonobos  
Golden Carrot  
Eagle Food & Beer Hall  
Bocado  
Warby Parker  
Barry's Boot Camp  
West Elm  
O-Ku

## DILWORTH

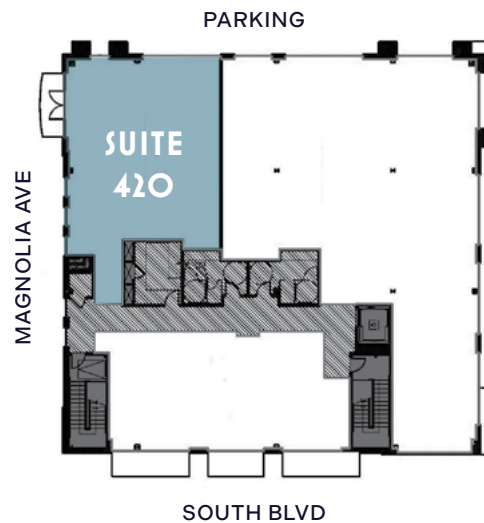
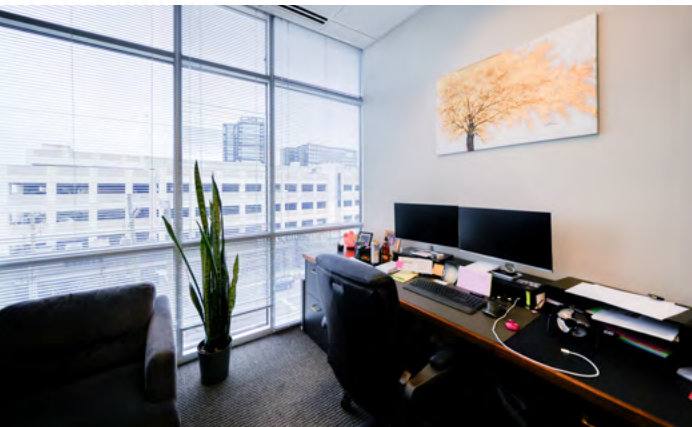


RAIL TRAIL

SOUTH BLVD.



## A wide-angle photograph of a modern office interior. On the left, a large black leather sofa sits next to a small glass-topped side table with a metal frame. Behind the sofa is a large window with horizontal blinds. In the center, a white reception desk with a curved front is positioned against a vibrant blue wall. On top of the desk are several potted plants, including a large green one and a red poinsettia. To the right of the desk, another black leather armchair is visible. The floor is a polished, dark, reflective material. The ceiling features a grid of recessed square lights. In the background, a white partition wall and a doorway leading to another office area are visible.



CLAIRE SHEALY  
704.607.1984  
704.926.1409  
claire@beacondevelopment.com

**► VIRTUAL TOUR**



# 1000 SOUTH BLVD

SOUTHBOROUGH

Beacon Partners is a commercial real estate firm specializing in the development, acquisition, and operation of industrial, office and mixed-use properties. Beacon leases, owns or manages more than 17.5+ million square feet of space throughout the Carolinas.

**FOR ADDITIONAL INFORMATION,  
PLEASE CONTACT:**

CLAIRE SHEALY  
704.607.1984  
704.926.1409  
[claire@beacondevelopment.com](mailto:claire@beacondevelopment.com)

  
BEACON  
PARTNERS

