



# SOUTHBOROUGH

2201 SOUTH BLVD, SUITE 230  
Charlotte, NC 28203

## ±2,455 SF OFFICE FOR LEASE

- Boutique, Class A office building in South End with four sides of floor-to-ceiling glass
- Amenitized with three ground floor restaurants and directly adjacent to Atherton Mill retail shops and restaurant offerings
- Adjacent, free structured parking
- Located directly along the South End Rail Trail
- Walkable to East-West Light Rail Station
- Less than 5 minutes from I-77, I-277, and Uptown Charlotte
- Easy access to Charlotte Douglas International Airport

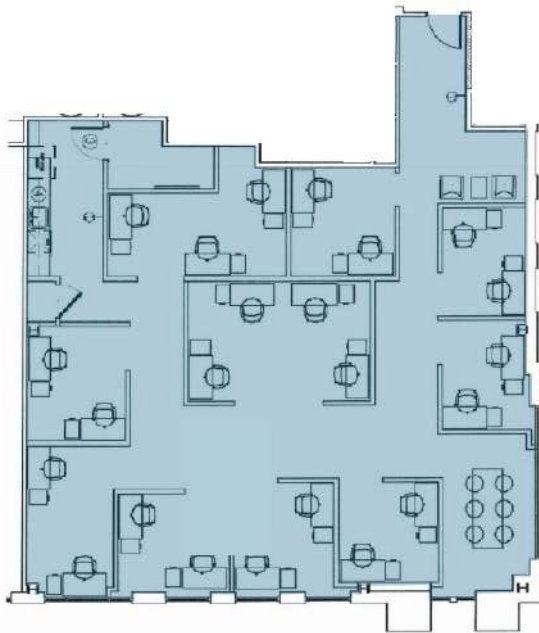




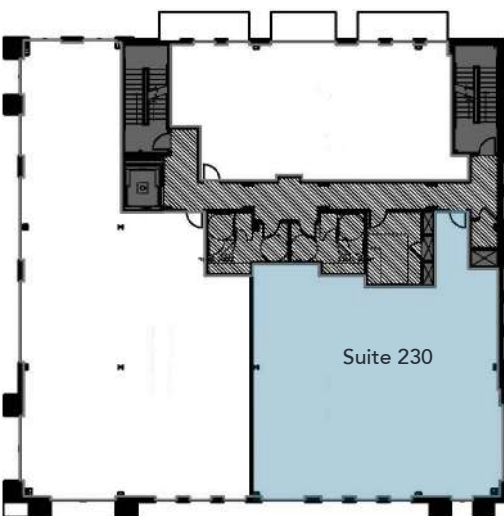
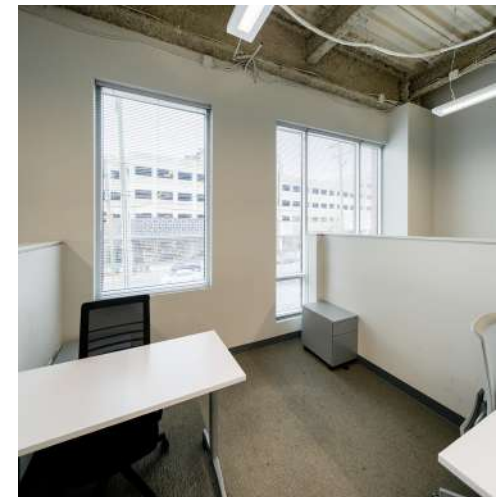
# SOUTHBOROUGH

2201 SOUTH BLVD, SUITE 230  
Charlotte, NC 28203

SUITE 230: ±2,455 SF



Full Floor



# SOUTHBOROUGH

2201 SOUTH BLVD, SUITE 230  
Charlotte, NC 28203



Beacon Partners is a commercial real estate firm specializing in the development, acquisition, and operation of industrial, office and mixed-use properties. Beacon leases, owns or manages more than 17.5+ million square feet of space throughout the Carolinas.