

# SOUTHBOROUGH

+/-1,567 SF OFFICE SPACE AVAILABLE

2201 SOUTH BLVD | SUITE 230 | CHARLOTTE, NC 28203



## FEATURES:

### +/-1,567 SF

- Class A building with retail on the first floor
- Free surface and covered parking
- Within walking distance to the East Blvd Light Rail Station
- Poppy's Bagels, Wine Loft & future retailer on 1st floor
- Adjacent to Lowe's Home Improvement and Publix
- Floor to ceiling glass
- Less than 5 minutes from I-77, I-277 and Charlotte CBD
- Numerous retail and restaurants within walking distance such as, Atherton Mill shopping center.
- Beacon Partners owns, leases and manages over 1 million SF in the Midtown and South End areas



FOR MORE INFORMATION, CONTACT:

**ERIN SHAW**

704.926.1414 | [erin@beacondevelopment.com](mailto:erin@beacondevelopment.com)

500 E Morehead Street | Suite 200 | Charlotte, NC 28202

[www.beacondevelopment.com](http://www.beacondevelopment.com)

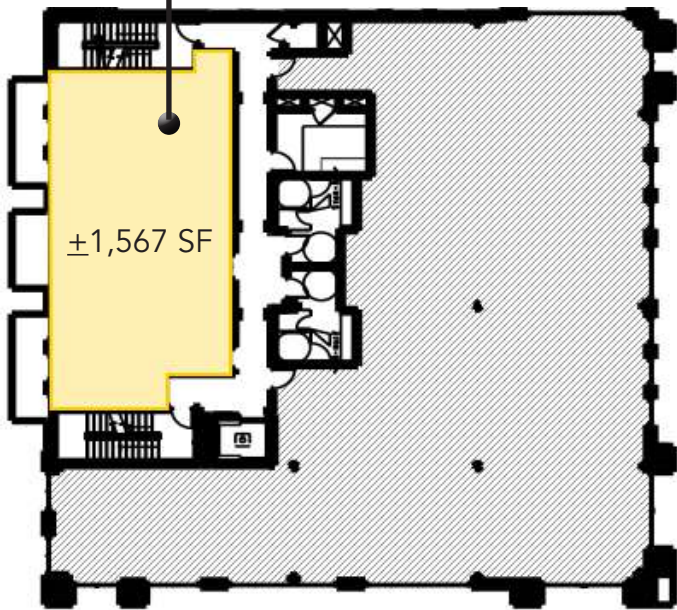
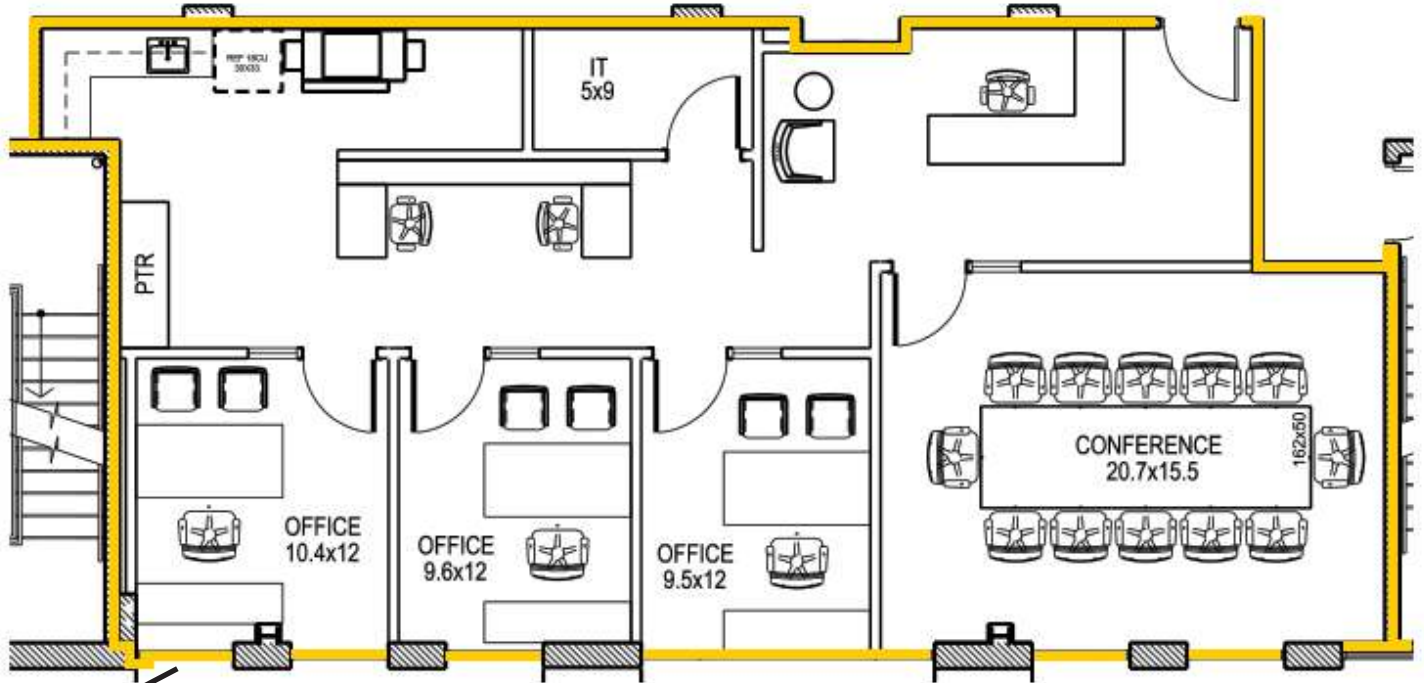


# SOUTHBOROUGH

+/-1,567 SF OFFICE SPACE AVAILABLE

2201 SOUTH BLVD | SUITE 230 | CHARLOTTE, NC 28203

## FLOOR PLAN:



FOR MORE INFORMATION, CONTACT:

**ERIN SHAW**

704.926.1414 | [erin@beacondevelopment.com](mailto:erin@beacondevelopment.com)

500 E Morehead Street | Suite 200 | Charlotte, NC 28202

[www.beacondevelopment.com](http://www.beacondevelopment.com)

