

# SOUTHBOROUGH

±1,580 SF OFFICE SPACE AVAILABLE

2201 SOUTH BLVD | SUITE 410 | CHARLOTTE, NC 28203



## SOUTH END OFFICE SPACE AVAILABLE

**+/-1,580 SF**

- Boutique, Class A office building constructed in 2008 with four sides of floor-to-ceiling glass
- Amenitized with three ground floor restaurants and across the street from Atherton Mill retail shops and restaurant offerings
- Adjacent, Free Structured Parking
- Directly along the South End Rail Trail and walkable to East-West Light Rail Station
- Less than 5 minutes from I-77, I-277 and Uptown Charlotte



FOR MORE INFORMATION, CONTACT:

**CLAIRE SHEALY**

704.926.1409 | [claire@beacondevelopment.com](mailto:claire@beacondevelopment.com)

500 E Morehead Street | Suite 200 | Charlotte, NC 28202

[www.beacondevelopment.com](http://www.beacondevelopment.com)

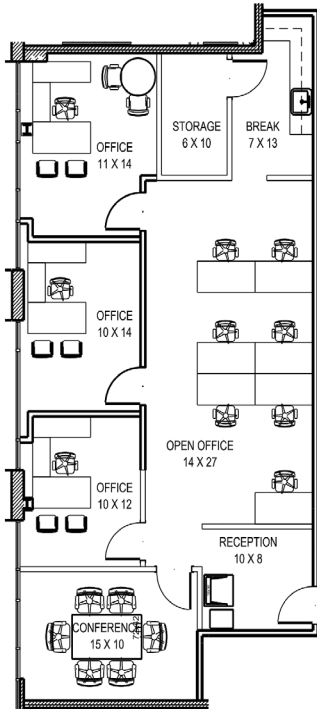


# SOUTHBOROUGH

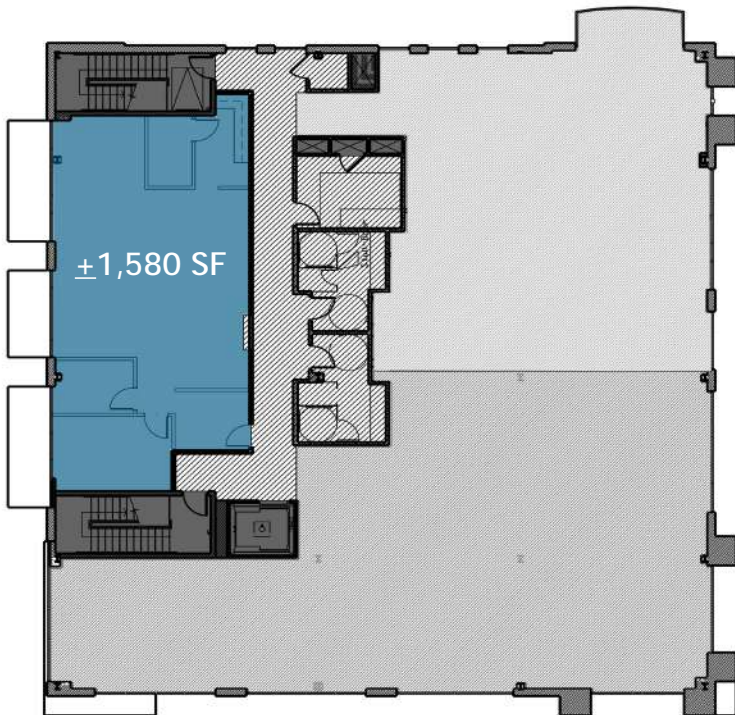
±1,580 SF OFFICE SPACE AVAILABLE

2201 SOUTH BLVD | SUITE 410 | CHARLOTTE, NC 28203

## FLOOR PLAN:



## FLOOR PLATE:



FOR MORE INFORMATION, CONTACT:

**CLAIRE SHEALY**

704.926.1409 | [claire@beacondevelopment.com](mailto:claire@beacondevelopment.com)

500 E Morehead Street | Suite 200 | Charlotte, NC 28202

[www.beacondevelopment.com](http://www.beacondevelopment.com)

