



SOUTHBOROUGH

2201 SOUTH BLVD, SUITE 420
Charlotte, NC 28203

±2,446 SF OFFICE FOR LEASE

- Boutique, Class A office building in South End with four sides of floor-to-ceiling glass
- Private balcony located off conference room
- Amenitized with three ground floor restaurants and directly adjacent to Atherton Mill retail shops and restaurant offerings
- Adjacent, free structured parking
- Located directly along the South End Rail Trail
- Walkable to East-West Light Rail Station
- Less than 5 minutes from I-77, I-277, and Uptown Charlotte
- Easy access to Charlotte Douglas International Airport





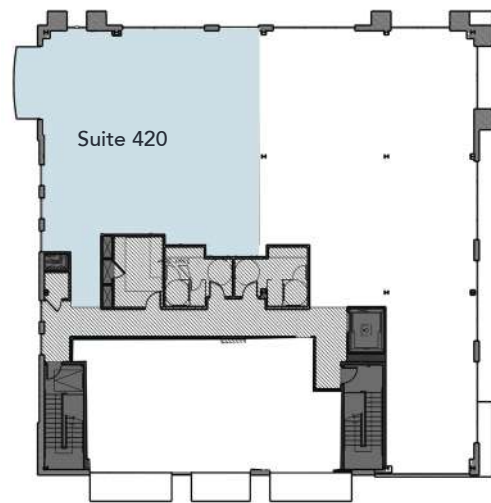
SOUTHBOROUGH

2201 SOUTH BLVD, SUITE 420
Charlotte, NC 28203

SUITE 420: ±2,446 SF



Full Floor



SOUTHBOROUGH

2201 SOUTH BLVD, SUITE 420
Charlotte, NC 28203



Beacon Partners is a commercial real estate firm specializing in the development, acquisition, and operation of industrial, office and mixed-use properties. Beacon leases, owns or manages more than 17.5+ million square feet of space throughout the Carolinas.