

3700 SOUTH BLVD | CHARLOTTE, NC 28209

THE STATION AT  
LoS

## PROJECT DETAILS:

- Office suites range from 5,000 to 105,000 square feet
- Secured access to each floor via touchless elevators and open-air staircases
- Tenant-dedicated fitness and locker rooms on site
- Free parking (3.0 per 1,000)
- 70-person training room with private terrace
- Located at the Scaleybark Light Rail Stop and Charlotte Rail Trail
- Designed to LEED Silver standard and Fitwell Healthy Building Design





## GETTING HERE IS EASY

THE STATION <sup>AT</sup>  
LoSo**Erin Shaw**

Managing Director | Investments  
erin@beacondevelopment.com  
704.926.1414

**Claire Shealy**

Associate | Office  
claire@beacondevelopment.com  
704.926.1409



BEACON  
PARTNERS  
*Investing in the future of our community*



## SURROUNDING AMENITIES

### ON-SITE RETAIL:

**TACO BOY**

**SWEAT  
METHOD.**

**salvata**  
salad kitchen



**Erin Shaw**

Managing Director | Investments  
erin@beacondevelopment.com  
704.926.1414

**Claire Shealy**

Associate | Office  
claire@beacondevelopment.com  
704.926.1409

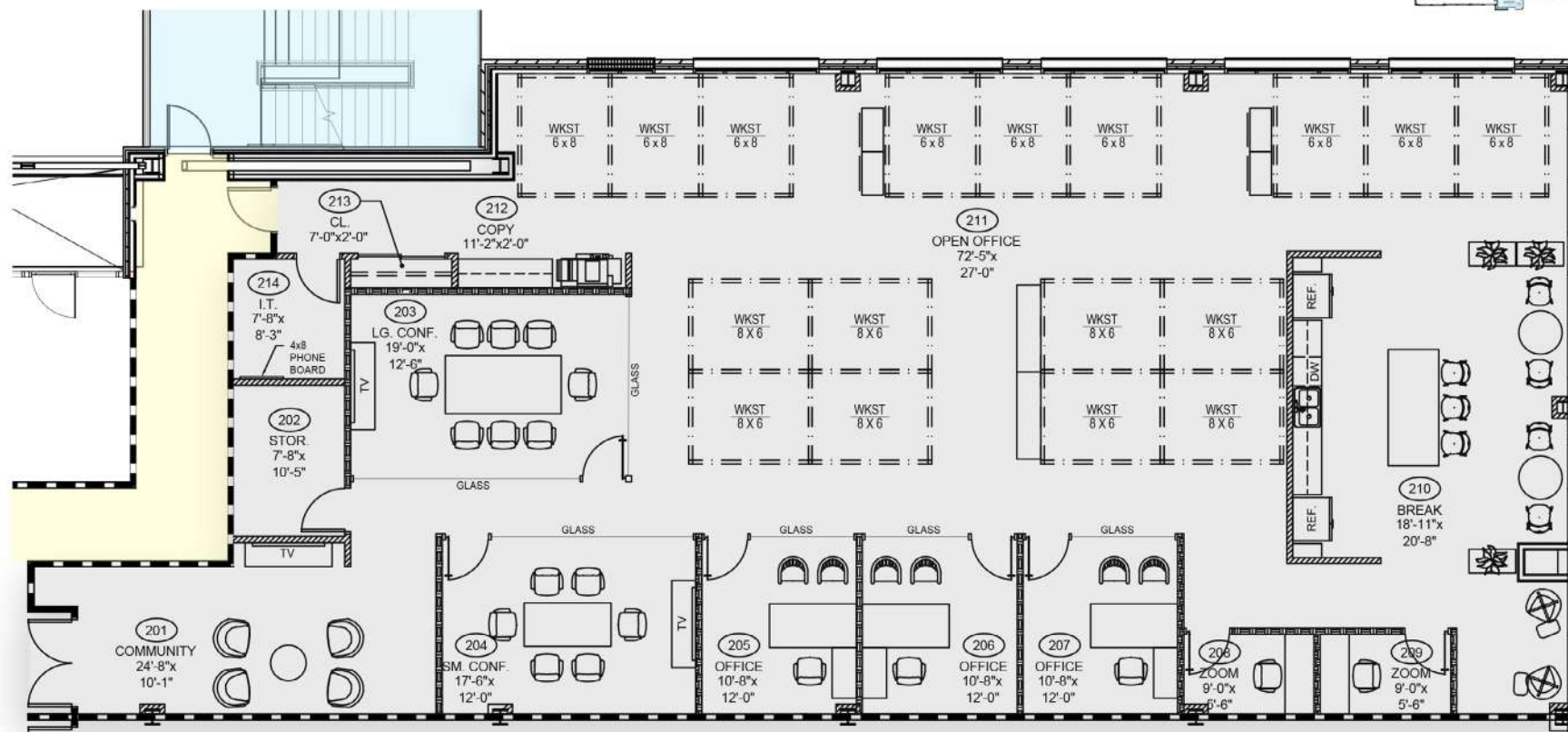
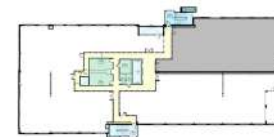


south boulevard

south charlotte/  
woodlawn road

uptown





south boulevard

← south charlotte/  
woodlawn road

uptown ➡

SUITE 300:  $\pm 4,876$  RSF



# THE STATION AT LoSo

## OFFICE

### Beacon Partners

#### Erin Shaw

Managing Director | Office Investments  
704.926.1414  
[erin@beacondevelopment.com](mailto:erin@beacondevelopment.com)

#### Claire Shealy

Associate | Office  
704.926.1409  
[claire@beacondevelopment.com](mailto:claire@beacondevelopment.com)  
[thestationatloso.com](http://thestationatloso.com)

## RETAIL

### Thrift Commercial Real Estate Services

Charles Thrift  
704.622.1795  
[charles@thriftcres.com](mailto:charles@thriftcres.com)  
[thriftcres.com](http://thriftcres.com)

Beacon Partners is a Carolina-based real estate firm specializing in the development, acquisition, and operation of industrial, office and mixed-use properties.



[beacondevelopment.com](http://beacondevelopment.com)