

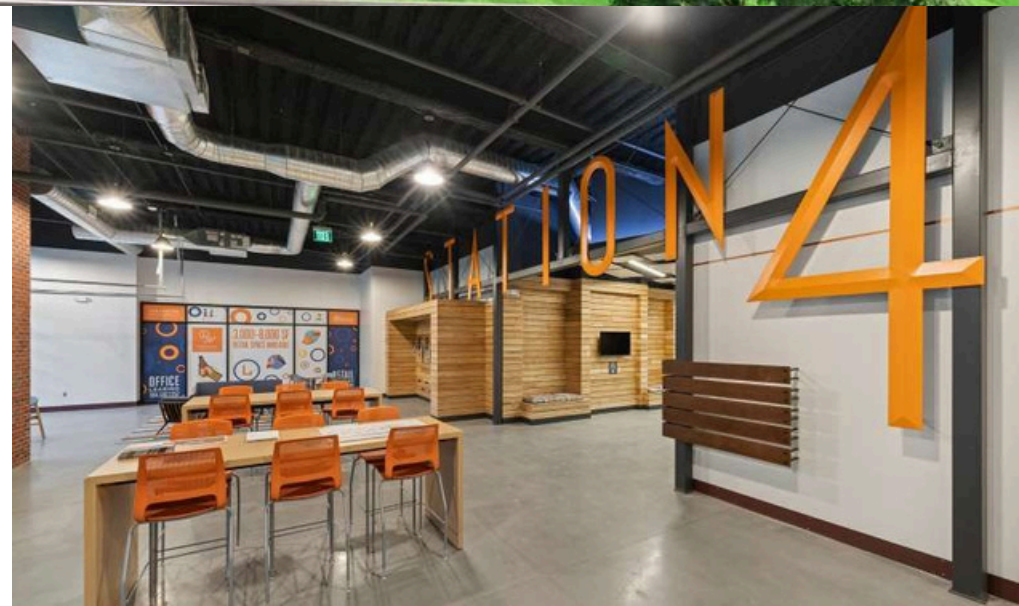
3600 SOUTH BLVD | SUITE 350 | +6,693 SF

THE STATION AT
LoSo



PROJECT DETAILS:

- 2,000 SF fitness center and locker rooms, featuring Peloton bikes
- Operable windows throughout
- Indoor-outdoor workspace on every floor
- 70-person training room with private terrace
- Located at the Scaleybark Light Rail Stop and Charlotte Rail Trail
- LEED Silver and Fitwell Healthy Building Design Certified



STATION 4

GETTING HERE IS EASY



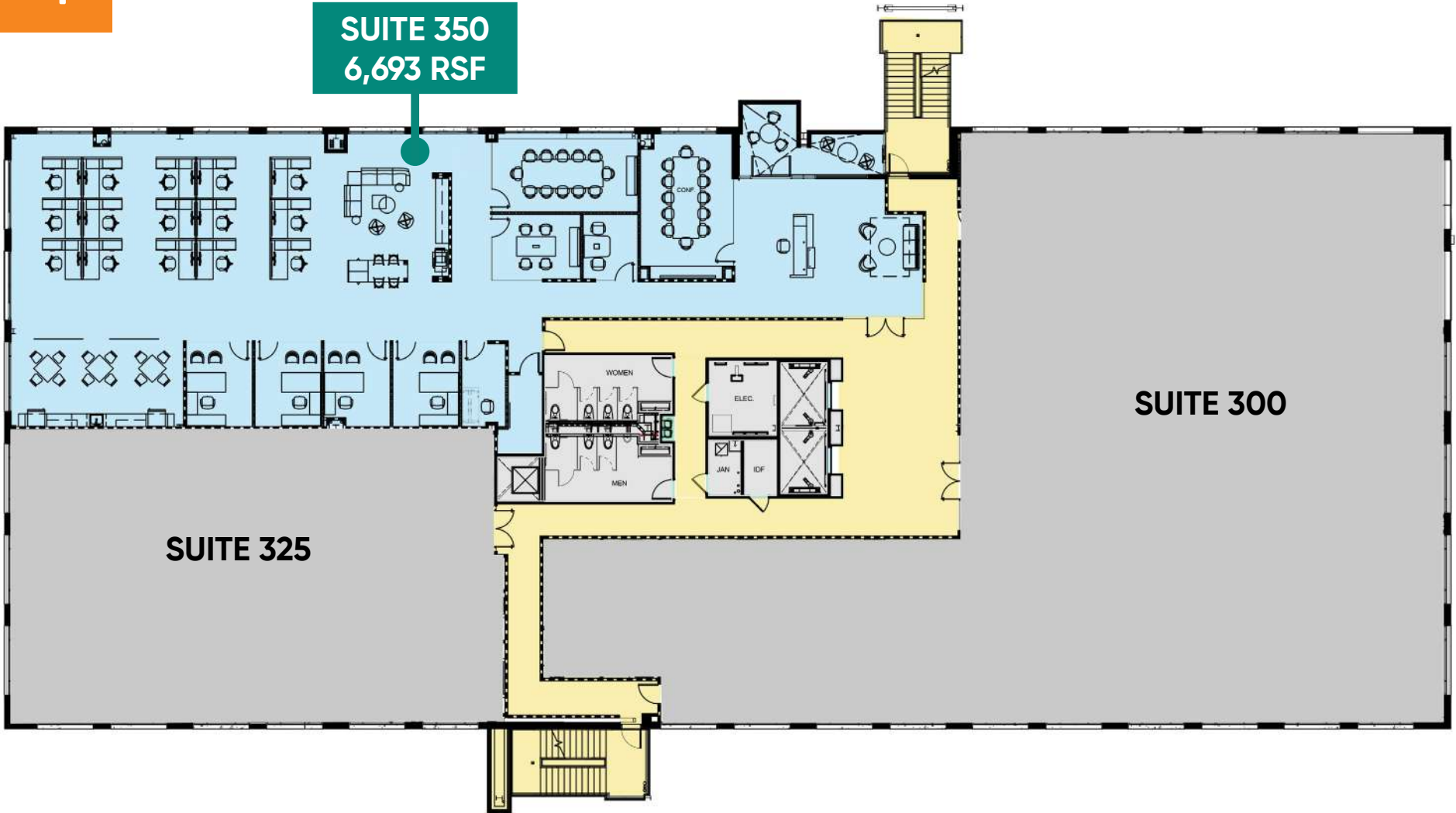
SURROUNDING AMENITIES

ON-SITE RETAIL:



THIRD FLOOR: SUITE 350 | 6,693 SF

SUITE 350
6,693 RSF



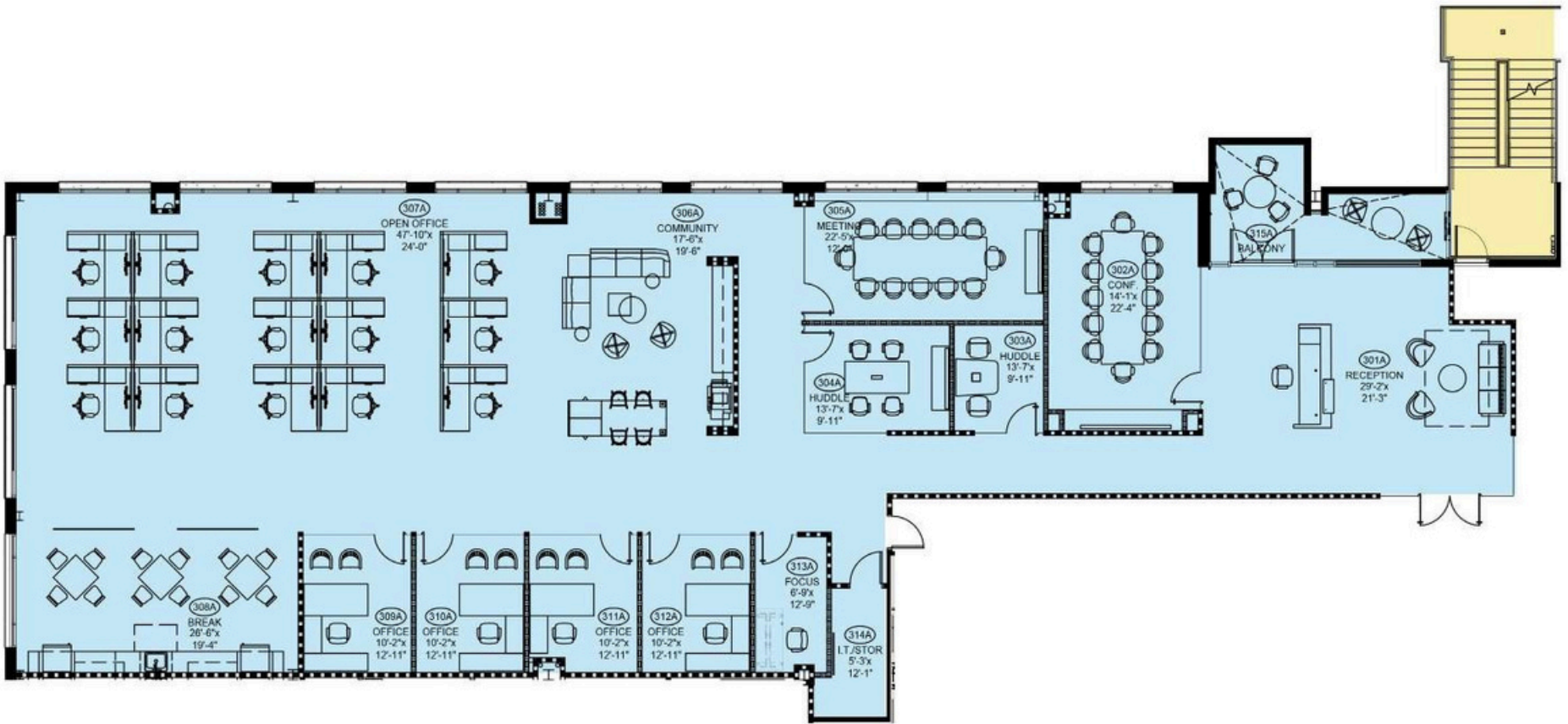
SUITE 325

SUITE 300

← south charlotte/
woodlawn road

south boulevard

uptown →

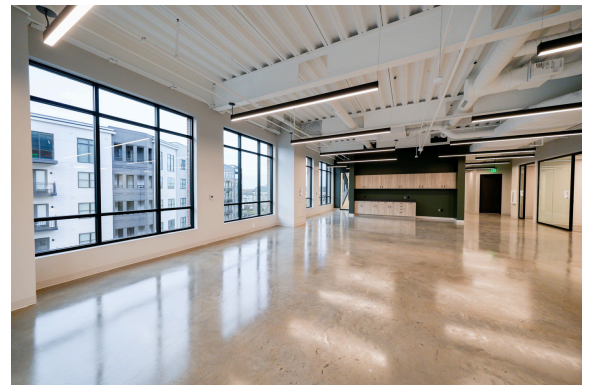
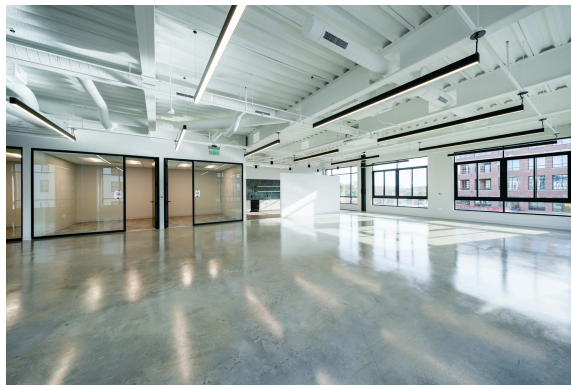


← south charlotte/
woodlawn road

south boulevard

uptown →

SUITE 350 VIRTUAL TOUR



THE STATION AT

LOSO

OFFICE

Beacon Partners

Erin Shaw

Managing Director | Office Investments

704.926.1414

erin@beacondevelopment.com

Claire Shealy

Associate | Office

704.926.1409

claire@beacondevelopment.com

thestationatloso.com

RETAIL

**Thrift Commercial
Real Estate Services**

Charles Thrift

704.622.1795

charles@thriftcres.com

thriftcres.com

Beacon Partners is a Carolina-based real estate firm specializing in the development, acquisition, and operation of industrial, office and mixed-use properties.



beacondevelopment.com