

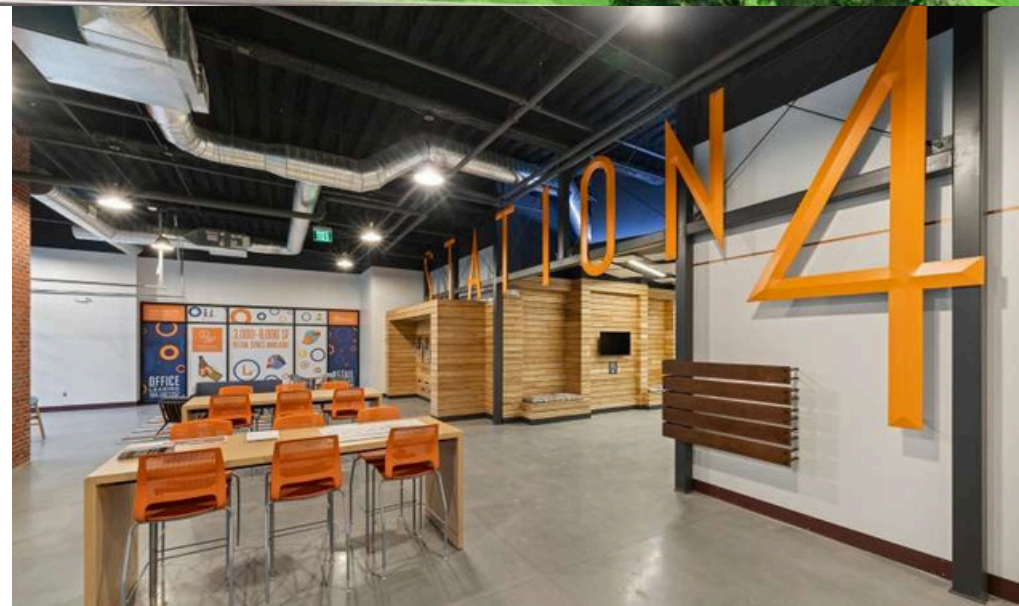
3600 SOUTH BLVD | SUITE 350 | +6,693 SF

THE STATION ^{AT}
LoSo



PROJECT DETAILS:

- 2,000 SF fitness center and locker rooms, featuring Peloton bikes
- Operable windows throughout
- Indoor-outdoor workspace on every floor
- 70-person training room with private terrace
- Located at the Scaleybark Light Rail Stop and Charlotte Rail Trail
- LEED Silver and Fitwell Healthy Building Design Certified



STATION 4

GETTING HERE IS EASY

THE STATION AT
LoSo



GETTING HERE IS EASY BY CAR, LIGHT RAIL OR VIA BIKE



LOCATED ON SOUTH BOULEVARD STEPS FROM THE SCALEYBARK LIGHT RAIL STATION

SURROUNDING AMENITIES

ON-SITE RETAIL:

TACO BOY

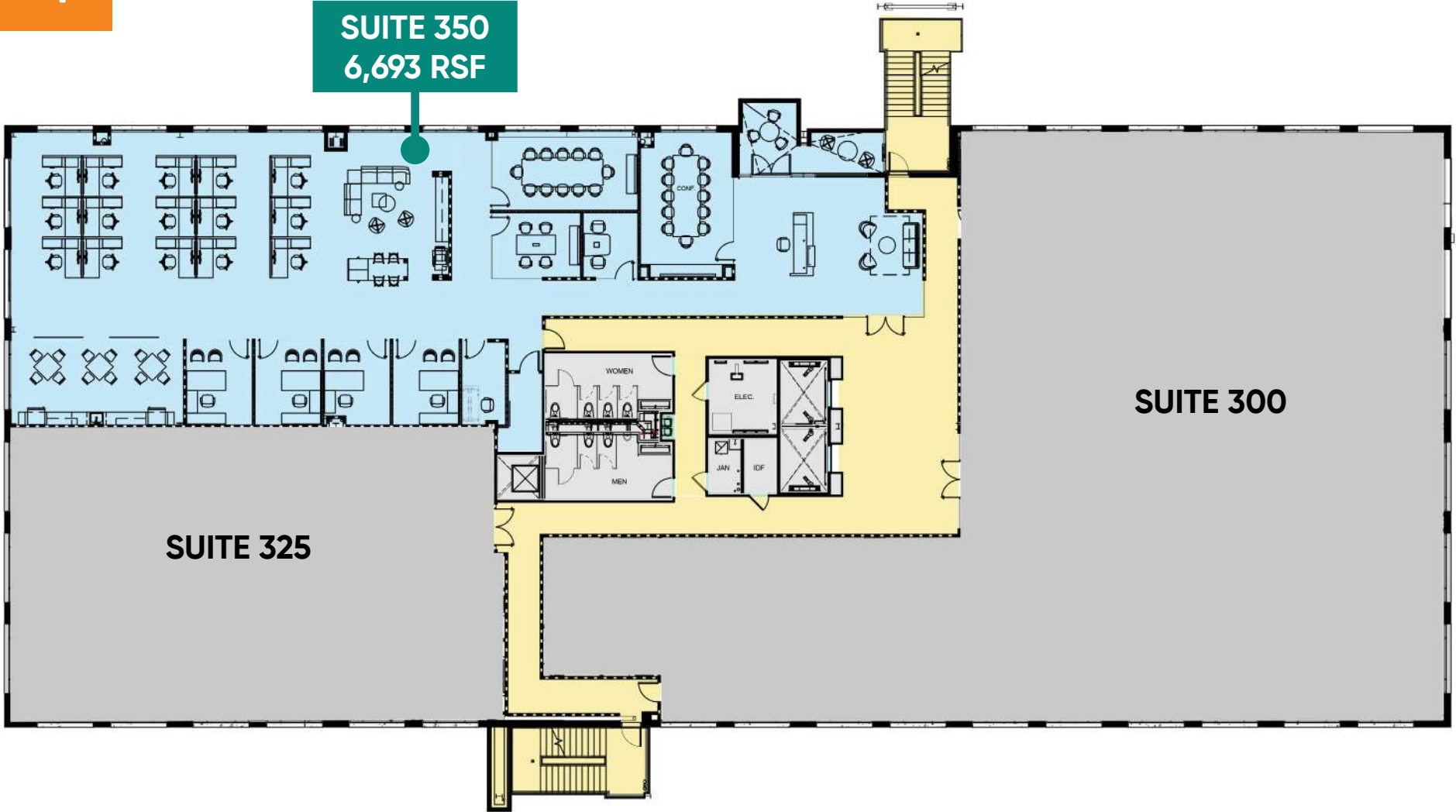
SWEAT METHOD.

salvata
salad kitchen



THIRD FLOOR: SUITE 350 | 6,693 SF

SUITE 350
6,693 RSF



SUITE 325

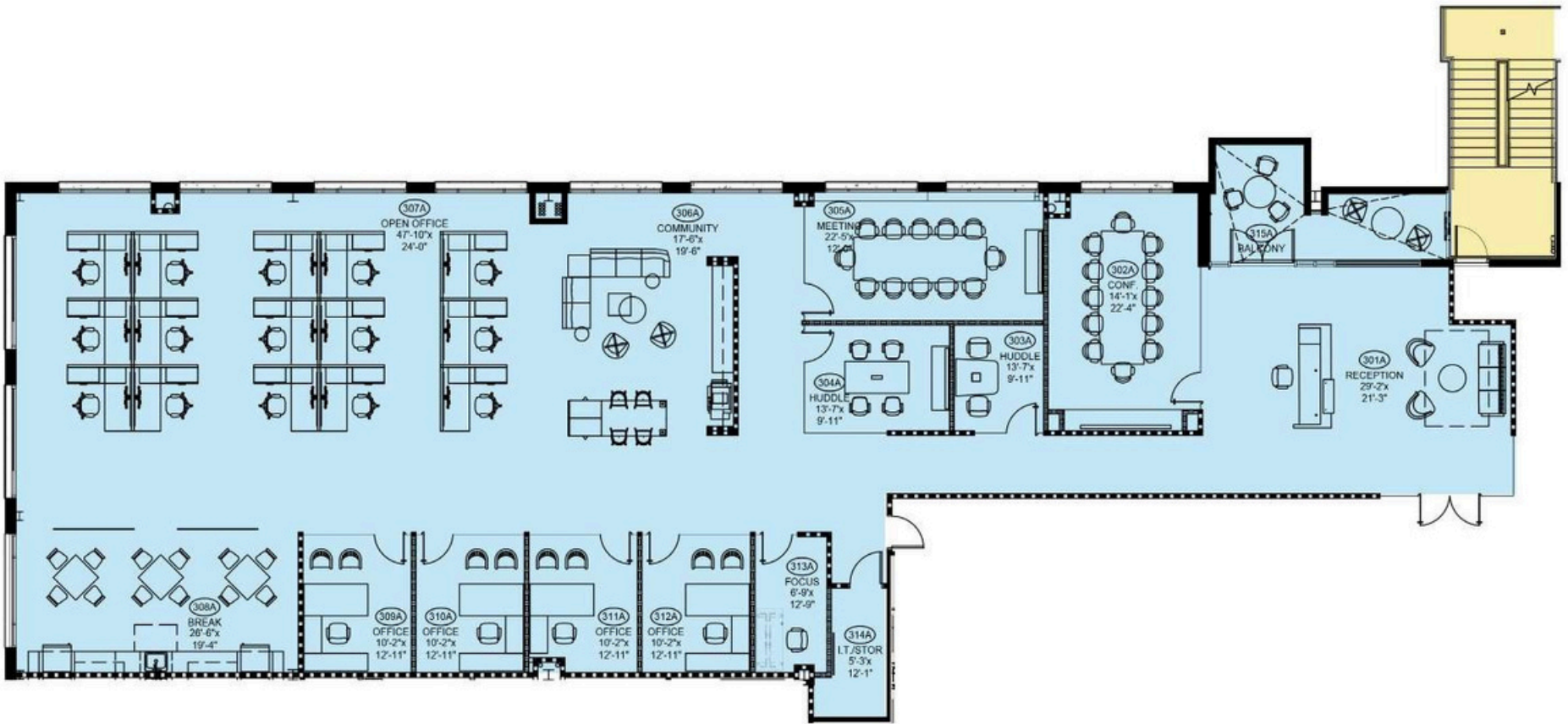
SUITE 300

← south charlotte/
woodlawn road

south boulevard

uptown →

THIRD FLOOR: SUITE 350 | 6,693 SF



← south charlotte/
woodlawn road

south boulevard

uptown →

SUITE 350 VIRTUAL TOUR



THE STATION AT

LOSO

OFFICE

Beacon Partners

Erin Shaw

Managing Director | Office Investments

704.926.1414

erin@beacondevelopment.com

Claire Shealy

Associate | Office

704.926.1409

claire@beacondevelopment.com

thestationatloso.com

RETAIL

**Thrift Commercial
Real Estate Services**

Charles Thrift

704.622.1795

charles@thriftcres.com

thriftcres.com

Beacon Partners is a Carolina-based real estate firm specializing in the development, acquisition, and operation of industrial, office and mixed-use properties.



beacondevelopment.com