

3600 SOUTH BLVD | SUITE 300 | ±10,389 SF

THE STATION ^{AT}
LoSo



PROJECT DETAILS:

- 2,000 SF fitness center and locker rooms, featuring Peloton bikes
- Operable windows throughout
- Indoor-outdoor workspace on every floor
- 70-person training room with private terrace
- Located at the Scaleybark Light Rail Stop and Charlotte Rail Trail
- LEED Silver and Fitwell Healthy Building Design Certified



STATION 4

GETTING HERE IS EASY

THE STATION AT
LoSo



SURROUNDING AMENITIES

ON-SITE RETAIL:

TACO BOY

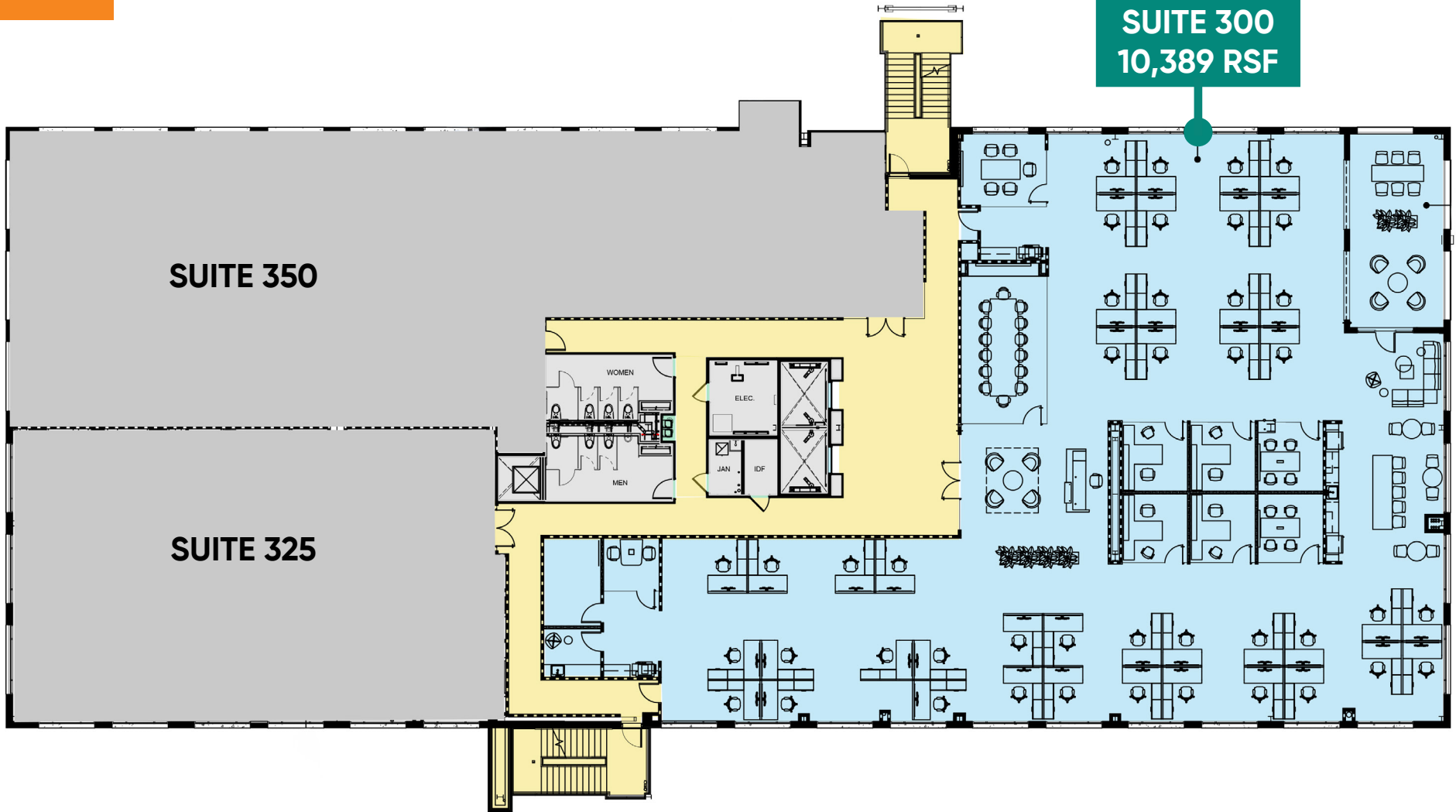
SWEAT METHOD.

salvata
salad kitchen

The People's Market
@ LoSo



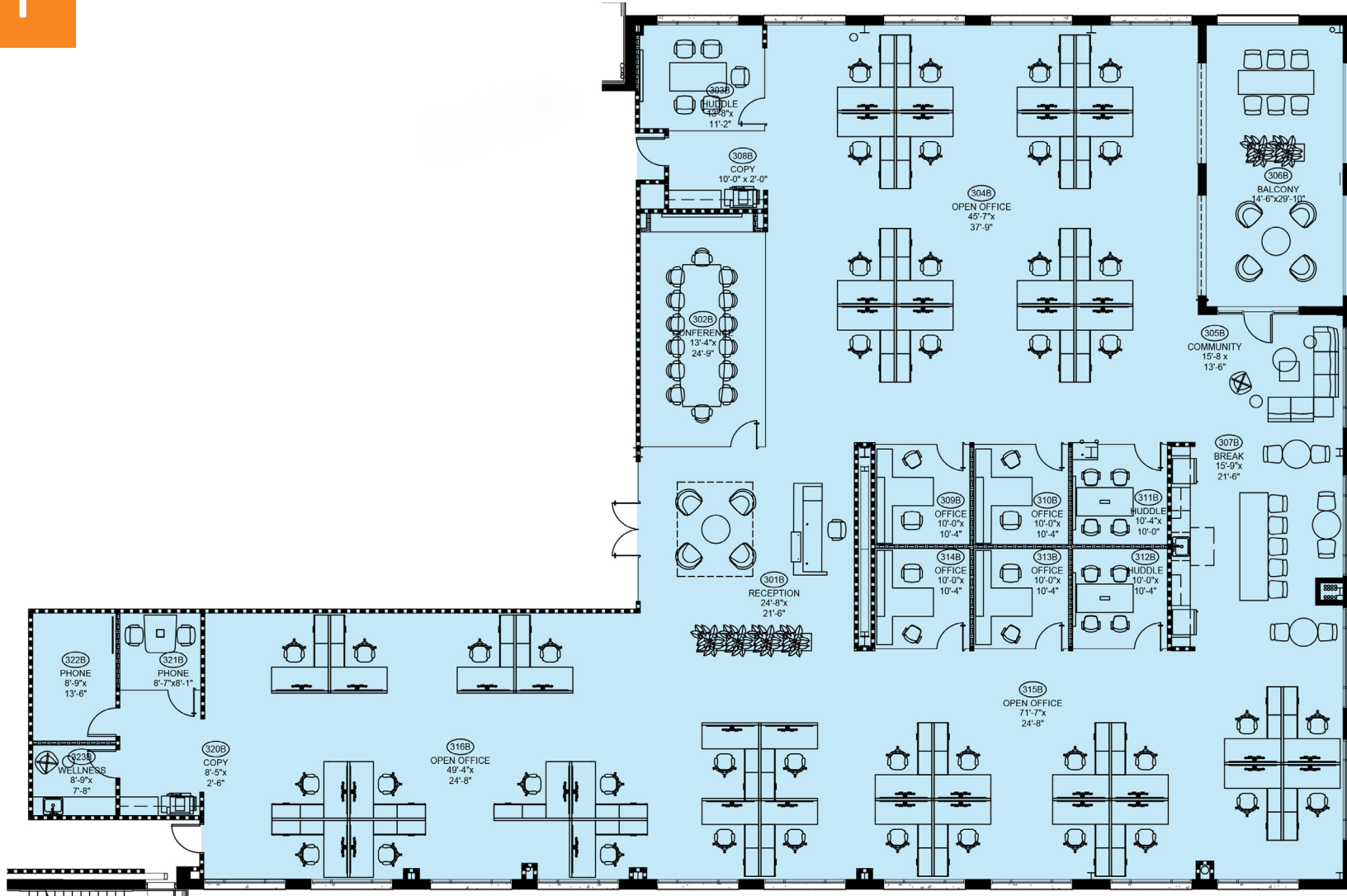
SUITE 300
10,389 RSF



← south charlotte/
woodlawn road

south boulevard

uptown →



← south charlotte/
woodlawn road

south boulevard

uptown →

THE STATION AT

LOSO

OFFICE

Beacon Partners

Erin Shaw

Managing Director | Office Investments

704.926.1414

erin@beacondevelopment.com

Claire Shealy

Associate | Office

704.926.1409

claire@beacondevelopment.com

thestationatloso.com

RETAIL

**Thrift Commercial
Real Estate Services**

Charles Thrift

704.622.1795

charles@thriftcres.com

thriftcres.com

Beacon Partners is a Carolina-based real estate firm specializing in the development, acquisition, and operation of industrial, office and mixed-use properties.



beacondevelopment.com