

THE ADDISON

831 E. MOREHEAD STREET, SUITE 640 | CHARLOTTE, NC 28202



OFFICE SPACE IN MIDTOWN AVAILABLE FOR LEASE

±3,721 SF

- Nine-story office building, ±68,000 SF
- An upper floor, corner suite with Uptown views and 9 private offices
- Built in 1926 as Charlotte's first luxury condominium; Converted to office and expanded in 1997
- Abundant parking with a covered deck at a 3 per 1,000 SF ratio
- Excellent visibility at signalized intersection
- Registered as a local Historic Landmark
- Ideal location between Dilworth, Midtown and CBD, with easy access to I-77 & I-277
- Numerous amenities nearby including Dowd YMCA, the Metropolitan, restaurants/retail, The Little Sugar Creek Greenway and Atrium Health's Main Campus
- Beacon Partners leases and manages over 1 million SF in the Midtown and South End areas



FOR MORE INFORMATION, CONTACT:

CLAIRE SHEALY

704.926.1409 | claire@beacondevelopment.com

500 East Morehead Street | Suite 200 | Charlotte, NC 28202

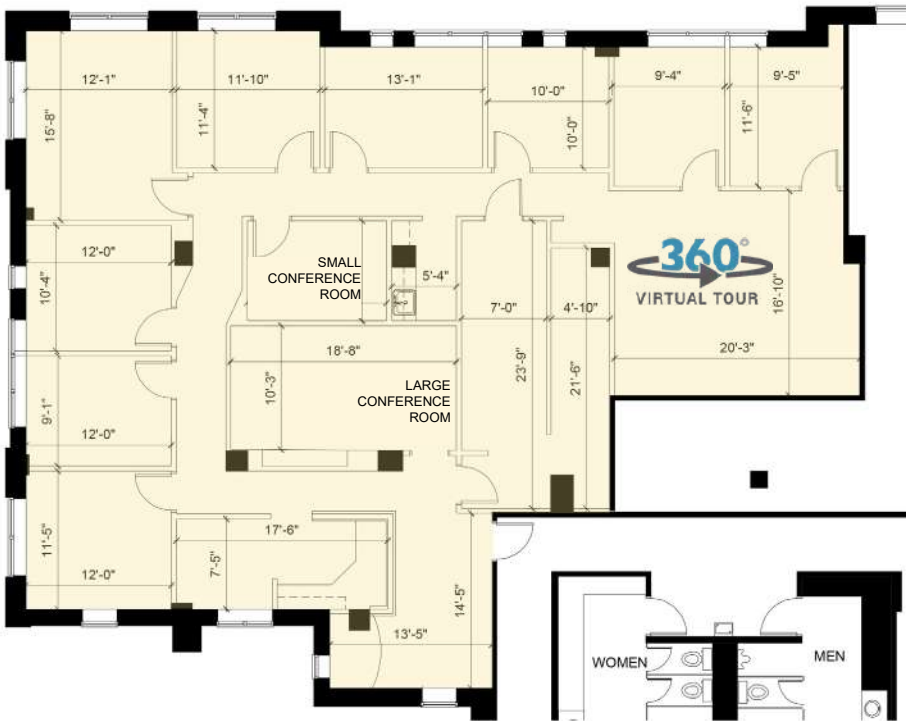
www.beacondevelopment.com



THE ADDISON

831 E. MOREHEAD STREET, SUITE 640 | CHARLOTTE, NC 28202

SUITE 640: ±3,721 SF



FOR MORE INFORMATION, CONTACT:

CLAIRE SHEALY

704.926.1409 | claire@beacondevelopment.com

500 East Morehead Street | Suite 200 | Charlotte, NC 28202

www.beacondevelopment.com

